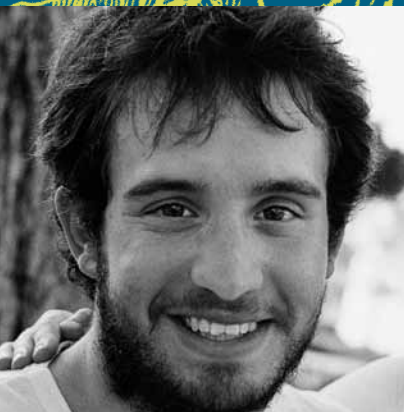


Jewish Federation of Greater Seattle



Annual Report FY 2010



Jewish Federation
OF GREATER SEATTLE

Connecting Jewish Lives. Strengthening Community.



Dear Friends,

We are pleased to present this 2010 Annual Report for the Jewish Federation of Greater Seattle.

Through one of the toughest economies in recent memory, the Jewish Federation's Community Campaign raised more than \$5 million, grew our donor base, and helped impact the lives of thousands of members of the Jewish community throughout the Puget Sound region, in Israel and around the world. Combined with the support of our 147 endowment funds, the Federation gave over \$9 million to worthwhile causes. Our Planning and Allocations process works tirelessly to ensure that your generous donations are effective and applied where they are needed most to support Jews and Jewish organizations.

While \$5 million is a strong result in a difficult economy, it was down from the previous year. This means we have begun to make changes that will help us continue to serve the Jewish community in a responsible, positive manner to achieve our objectives of connecting Jewish lives and strengthening community. Your Federation continues to provide support for those in need today and for innovative programs that work to ensure a vibrant Jewish community for the future.

In addition to our Community Campaign, the Jewish Federation supported many organizations this year through our Challenging Times Impact Grants, Small and Simple Grants, Operation Promise and Israel Now funds. Some of these funds support activities not only in our local Puget Sound region, but in our partner communities of Khabarovsk, Russia and Kiryat Malachi and Hof Ashkelon, Israel.

Thanks to generous donors and dedicated volunteers, we continue to hear positive responses to our various community programs. With the addition of new and successful programs such as Teen Philanthropy and The PJ Library®, we continue to build the next generation of leaders. Ongoing activities include our Women's Philanthropy "Connections" Brunch, Cardozo Society and Maimonides Society events, Young Couples and Young Leadership programs, in addition to community-wide activities such as the annual Hanukkah celebration, other holiday observances and Ethnic Flavors of Israel.

Our grants to partner agencies, publication of the *JTNews*, the Calendar to Jewish Washington, our public affairs and government relations activities and our efforts to ensure the safety of our community through SAFE Washington, all demonstrate the unique and vital role that the Jewish Federation plays in our local community. We continue to support Israel education programs and to fight anti-Israel initiatives.

Internationally, our partners, the American Jewish Joint Distribution Committee (JDC) and the Jewish Agency for Israel (JAFI), provide critical services throughout the world. From their relief efforts after the earthquake in Haiti and the Carmel fires in Israel, to the rescue of the remnant Yemenite Jewish community, the JDC and JAFI ensure that Jews are supported around the world.

We recognize and honor the thousands of hours contributed to our organization by our board members, committee chairs and members, fund-raising and program volunteers. It is gratifying to know that you continue to value and support the work we do and that the future of our Jewish community is important to so many.

There are many challenges facing our community in the years ahead, including concerns about retaining our Jewish identity, affiliation with Israel and supporting vulnerable Jewish populations here at home and across the globe. The Jewish Federation is examining new and effective ways to meet the challenges of the future. We are committed to continuing our work to build a strong, vibrant Jewish community and target resources where they can be the most effective.

You, our supporters, are at the heart of all we do. Thank you. We look forward to a bright Jewish future together.

Ron Leibsohn
Board Chair

Richard Fruchter
President & CEO



Ron Leibsohn
Board Chair



Richard Fruchter
President & CEO

Executive Team

Richard M. Fruchter
President & CEO

Nancy Greer
Vice President, Finance and
Administration & CFO

Keith Krivitzky
Vice President, Center for
Jewish Philanthropy

Amy Wasser-Simpson
Vice President, Planning
& Community Services



Our Mission

“The Jewish Federation of Greater Seattle works to ensure a vibrant Jewish community that is connected locally, in Israel and worldwide.”

We do this through:

- Connecting people to Jewish opportunities and Jewish giving.
- Bringing the community together to celebrate our diversity and plan for the future.
- Raising funds for a wide array of vital needs in the Jewish community.

Building a Jewish Future

The Jewish Federation facilitates *tikkun olam*, repairing the world. We connect the greater Seattle community to Israel and the global Jewish people. We help those in need in our community and beyond, in part through advocacy in Olympia and Washington, DC. With our strong commitment to building a vibrant Jewish future, we train teachers, offer engaging Jewish programs and give scholarships for our youth to attend Jewish summer camps and programs in Israel.

Keeping You Connected

We offer multiple ways for you to connect to Jewish life and resources—in person, online and in print. In addition to events and community celebrations, volunteer opportunities and special interest groups, we sponsor programs about and travel to Israel, we own the region’s only Jewish newspaper, *JTNews*, and co-sponsor our community’s online Jewish events calendar.

Meeting Community Needs

Each year, the Jewish Federation raises and distributes more than \$5 million through its Community Campaign and another \$3 million through its endowment. These funds help feed the hungry, care for the sick and aged, build Jewish identity, promote arts and culture, educate and advocate—locally, in Israel and worldwide.

By focusing on the big picture, we help create partnerships and bring the broader community together to address key issues and target resources effectively. To learn more about what we do, visit our website at www.JewishInSeattle.org.

Programs & Initiatives

The Jewish Federation has both ongoing and emerging programs and initiatives. From social action and Jewish education to Israel-related programming and leadership development, we have numerous ways for you to plug in to the community and get involved.

- Our **public affairs and government relations efforts** secure state and federal funds for community organizations, fight discrimination and bigotry, enhance security and help those in greatest need.
- We **train the next generation** of givers through our teen philanthropy programs: *J.Team*, *Youth Mitzvah Funds*, and our teen volunteer service program, *JServe*.
- We **build bridges** between the Seattle community and Israel, through our partnership with the Israeli communities of Kiryat Malachi and Hof Ashkelon. We advocate for Israel and educate our local community to **ensure strong US-Israel relations**.

- We **train Jewish education teachers and educators** and offer engaging Jewish educational and social action programs, such as *Hebrew High* for 9th-12th graders.
- Our Seattle Jewish Community Endowment Fund, with assets of approximately \$30 million, provides an important and secure way to **leave a legacy**.
- We **organize community missions and travel experiences to Israel**, such as this year’s Israel Unplugged trip, which brought close to 100 community members to Israel, most for the first time.
- We **develop future leaders** for our community through our *SpringBoard* young leadership program, *Young Couples Initiative* and *Menschworks* volunteer service program.
- We **help build Jewish identity** at a young age through *The PJ Library*®, which is currently providing free Jewish books and CDs to over 1,500 children. We also **give out more than \$100,000 in scholarships annually for Jewish overnight camps and Israel experience programs**. The Jewish Federation is also one of the **key sponsors of Taglit-Birthright Israel and MASA** programs in Israel, which enable young adults to grow Jewishly and connect with their contemporaries in Israel.
- Our affinity groups, including *Women’s Philanthropy*, *Cardozo Society* for legal professionals, *Maimonides Society* for medical professionals, and *Young Leadership*, provide opportunities for members of our community to network with their peers and to have a philanthropic impact.

Looking Back and Looking Forward

Reflection each year means looking back on events from our past and looking ahead to the promise of the future.

This year, we saw the final chapter in the 2006 shootings at our office, with the January, 2010 sentencing of the gunman to life in prison without possibility of parole.

Now, together with you, our supporters, we can move forward with a renewed commitment to building a vibrant organization and a stronger Jewish community.

In these past few years, we have increased our donor base, added more than 5,000 names to our Jewish community newsletter and database, welcomed hundreds of new residents to our community and engaged with more than 3,000 community members through our events.

We thank our contributors and supporters listed in the following pages for making this work possible. It is with pleasure that we serve you and with hope for a bright Jewish future that we present this 2010 Annual Report for the Jewish Federation of Greater Seattle.



Board of Trustees and Awards

Board of Trustees

Board Chair
Ron Leibsohn

Executive Committee

Community Campaign Chair
Shelley Bensussen

Immediate Past Chair
Governance Chair /
Center for Jewish
Philanthropy Chair
Robin Boehler

Vice Chair
Carl Bianco

Vice Chair
Tammy Federman

Vice Chair /
Endowment &
Planned Giving Chair
David Stiefel

Secretary
Carol Gown

Treasurer / Finance &
Administration Chair
Andrew Cohen

Planning & Allocations Chair
Lisa Fein

Women's Philanthropy Chair
Celie Brown

Chair's Appointee to
Executive Committee
Stephen Loeb

Chair's Appointee to
Executive Committee
Naomi Newman

Chair's Appointee to
Executive Committee
lantha Sidell

At-Large Members

Todd Alberstone

Jack Almo

Jerry Anches

Jacque Bayley

Norman Behar

Zane Brown, Jr.

Shelly Cohen

Michael Dickstein

Dave Ellenhorn

Don Etsekson

Peter Horvitz

Lorna Isenberg

Neil Ross

Brian Schultz

Ex Officio

Merle Cohn

Albert Franco

Ray Galante

Eileen Gilman

Frankie Loeb

Gerry Ostroff

Herb Pruzan

Lucy Pruzan

Michele Rosen

Herman Sarkowsky

lantha Sidell

Michael Spektor

Rob Spitzer

Ernest Stiefel

Irwin Treiger

Standing Committee Chairs

Community Services Chair
Todd Alberstone

Jewish Education Chair
Steve Hemmat

JTNews Chairs
Scott Michelson (2009)
Peter Horvitz (2010)

Rabbinic Representatives

Va'ad HaRabanim
Al S. Maimon

Washington Coalition
of Rabbis
Rabbi Jonathan Singer

Thanks to all those serving our Jewish community, whether on the 2009-2010 Board, a committee or as a volunteer.

Jewish Federation of Greater Seattle Board Chair's Award: Andrew Cohen



The Board Chair's Award for Outstanding Service is the Federation's most prestigious recognition. It was created and endowed by past Federation President Dr. Charles Kaplan ^{z"l} and Lillian Kaplan ^{z"l}.

Andrew Cohen is the principal of CoHo Accounting. He has served on the board for many years, is currently our Treasurer, Chair of F&A, and serves on the Executive Committee. In addition to keeping track of the budget for our general operations, his work on collections and the *JTNews* board warrant special mention.

Pamela Waechter ^{z"l} Jewish Communal Professional Award: Rivy Poupko Kletenik

The Pamela Waechter Jewish Communal Professional Award recognizes professionals working at a Jewish institution in the greater Seattle area for significant contributions to the Jewish community. This award, named for the Federation's Director of Annual Giving Pamela Waechter ^{z"l}, was awarded for the first time in 2007.



A selection committee chose from eight highly regarded nominees, all of whom are dedicated leaders, warm and caring community members and true role models for other professionals. These qualities are a reflection of Pam.

Rivy Poupko Kletenik is the Head of School at the Seattle Hebrew Academy. She lectures and teaches extensively throughout the greater Seattle community, including at Turn The Page, and shares her wisdom and teachings of Jewish interest in local and national publications.

Spitzer Young Leadership Awards: Alexa Huggins & Jack Almo

Jack ^{z"l} and Charlotte Spitzer created an endowment fund at the Jewish Federation to annually recognize at least two deserving young leaders in our community, ages 25-40. The Spitzer Young Leadership Awards are given to individuals who demonstrate leadership and vision for the community.



Alexa Huggins, a financial analyst at Boeing, has proven herself as a young leader. She is a devoted volunteer and has served as Menschworks Chair, SpringBoard Chair, on the YLD executive committee and currently is Ben-Gurion Society Chair for the Jewish Federation. She also went on the YLD Mission to Israel a few years ago. **Jack Almo** works at UBS as a private wealth advisor. He is Chair of our Special Initiatives Fund, Vice Chair for PAC and incoming PAC Chair, and will serve on our Board's Executive Committee. This is in addition to his numerous other roles in the Jewish and secular community.



Grinspoon-Steinhardt Award for Excellence in Jewish Education Sonya Basseri

The Grinspoon-Steinhardt Award for Excellence in Jewish Education is given out locally across the country to educators who have made a commitment to the field of Jewish education.

Sonya teaches kindergarten at the Seattle Hebrew Academy (SHA). Her lessons are described as "deeply thought out, with every element of her classroom planned with deliberation, student dignity, child appropriateness and student learning at its heart". She has also been described as a wonderful mentor for her fellow educators and as an exceptional teacher with a wonderful classroom presence. According to her SHA community and parents of her students, Sonya's carefully crafted lessons allow the students to grow and develop as independent thinkers in both Judaic and secular studies. Her sunny disposition and love of the students permeate every aspect of her teaching.



Special Project Supporters

It is with appreciation that we acknowledge the following donors whose contributions support our special project funds. These programs benefit members of the Jewish community at home and abroad.

Bill Halpern Ethiopian Scholarship

Joann and Carl Bianco
Elie Halpern
Margaret and Sidney Weiner

Camp Scholarships Fund

Joann and Carl Bianco
Bobbi Bridge
Bradley Bridge
Pam and Ed Bridge
Drs. Marilyn Weiss and
Theodore Bridge
Nancy and Paul Etsekson
Samuel Israel Foundation
Gail Katz and Henry Liebman
Peachy Levy
Janet Levy Pauli and
William Pauli
Mary-Lynne and
Marvin Reiner
Itai Rosenberger
Dave Rudin
Alfred and Tillie Shemanski
Testamentary Trust
and Foundation
Shulman Loeb
Family Foundation

Bradley and Lynne Smith
Penny Steele
Cindy and Bob Strauss
Mr. Aaron Venar

Chile and Haiti Emergency Relief

Ruth and Myron Bovarnick
Francine Cohen
Sam Fayman
Eileen Finkelstein
Joanna and Dr. Lane Gerber
Ann and Joe Rosenblume
Janice Russ
Tzafir Sheffer
Shulman Loeb
Family Foundation

New Ways - Community High School of Jewish Studies Grant Program (Big Dream)

Debra Mailman
Bradley and Lynne Smith

Pamela Waechter^z¹ Memorial Fund

Sally and Elliot Paul
Michele Rosen

The PJ Library[®]

Carol Auerbach and
Albert Berger
Joann and Carl Bianco
Ruth and Eugene Freedman
Eileen Gilman
Harold Grinspoon Foundation
Brian McLaughlin
Jana Miller
Newman Family Foundation
Lucy and Herbert Pruzan
Susan and Allen Reiter
Audrey Schoen
Justin Wolkenstein-Guiliano

UJC Ethiopian National Project

Elie Halpern

Yom HaZikaron Memorial Project

Erez Ben-Ari
Dina Tanners and
Howard Cockerham

Youth Philanthropy

Dr. Janis Bridge
Jill and Daniel Calvo
Bobbi Chamberlin
Drs. Mariann and
David Drucker
Eileen Gilman
Marla and Martin Goldberg
Harold Grinspoon Foundation
Amy Handler
Peggy and Peter Horvitz
Drs. Matthew and
Jackie Leibsohn
Jeff Matloff
Tami and Mark Rogers
Robin Rogel-Goldstein and
Dennis Goldstein
Paula Rose^z¹
Neil Ross
Shulman Loeb
Family Foundation
Iantha and Stan Sidell
Gillian and David Witus

Community Campaign Partner Agencies

Human Need

Jewish Family Service
Caroline Kline Galland Center
and Affiliates
Seattle Association for
Jews with Disabilities

Jewish Education

BBYO – Evergreen Region
Jewish Day School of
Metropolitan Seattle
Jewish Studies
Program at the University
of Washington
Menachem Mendel
Seattle Cheder
Northwest Yeshiva
High School
Seattle Hebrew Academy
Seattle Jewish
Community School
Washington State Holocaust
Education Resource Center

Jewish Identity/ Community Building

American Jewish Committee
Anti-Defamation League
Hillel at University of
Washington
Hillel at Washington
State University
Hillel at Western
Washington University
JTNews
Stroum Jewish
Community Center
Washington State
Jewish Historical Society

World Jewry

American Jewish Joint
Distribution Committee
Jewish Agency for Israel
Jewish Federations of
North America
Khabarovsk Chessed Center
Kiryat Malachi Emergency
Medical Clinic
Leket Israel
(formerly Table to Table)
Selah: Israel Crisis
Management Center
Taglit - Birthright Israel
TIPS (Tucson, Israel, Phoenix,
Seattle) Partnership
YEDID: Kiryat Malachi
Citizens Rights Center





Financials

Fundraising Income

2010 Unrestricted Community Campaign (\$5,128,917 as reported to Board, minus the PACE/LOJE total)	\$4,828,017
Perpetual Annual Campaign Endowment (PACE)	\$300,900
Lion of Judah Endowment (LOJE) income (Perpetual Annual Campaign Endowment/Lion of Judah Endowments)	
Restricted Giving to Projects (The PJ Library®, Teen Philanthropy, Scholarships, etc.)	\$579,045
Total Community Campaign Income for 2010	\$5,707,962

Other Income

Corporate Partnership/Sponsorships	\$39,691
Donor Designation to Agencies	\$854,888
In Kind	\$38,767
Registration Fees/Event Patronage	\$146,706

Impact in the Community During Fiscal Year 2010 from Community Campaign Proceeds

Israel and Overseas	\$1,261,383
Local Jewish Identity Building	\$469,163
Local Human Need	\$409,130
Local Jewish Education	\$324,238
Reserves and Contingency	\$9,825

Additional Grantmaking in 2010

Camp Scholarships	\$102,427
Capital Needs Grants	\$70,000
Challenging Times Economic Impact Grants	\$65,000
Operation Promise	\$63,500
Israel Scholarships	\$27,824
Small and Simple Grants	\$23,000

Impact in the Community Seattle Jewish Community Endowment Fund

Partner Agencies	\$993,760
Local Jewish Non-Partner Agencies	\$347,672
Local Secular Organizations	\$540,280
JFGS for Campaign Support	\$787,904
JFGS for Non-Campaign Support	\$367,706
Overseas Agencies	\$129,540
Non-Local Jewish Organizations	\$140,054
Non-Local Secular Organizations	\$90,005
Total amount granted in FY2010	\$3,396,923



Jewish Federation

OF GREATER SEATTLE

Connecting Jewish Lives. Strengthening Community.

Charles & Ann Bianco Building
2031 Third Avenue, Seattle, WA 98121
Main office: 206 443-5400
Info@JewishInSeattle.org
www.JewishInSeattle.org

Printing of this annual report generously
made possible by Neil Ross.

