

Annual Report

2012



The Jewish Federation
OF GREATER SEATTLE

THE **STRENGTH** OF A PEOPLE.
THE **POWER** OF COMMUNITY.

A MESSAGE FROM OUR LEADERSHIP



Shelley Bensussen
2011-13 Board Chair



Nancy B. Greer
Interim President & CEO

Dear Friends,

Greater Seattle is a hub of innovation. We have led the way in everything from building the world's best airplanes to developing the software on which we wrote this letter.

Innovation characterizes our Jewish community and the Jewish Federation of Greater Seattle. In 2012, we took a hard look at our capacity to further Jewish engagement and meet the Jewish community's needs, as economic difficulties persisted and our community continued to change. Our goal was to sharpen our ability to serve more

effectively—to assist those in need, to strengthen Jewish identity, to build a thriving Jewish community.

The result: a new decision-making approach that taps fresh thinking, welcomes a broad range of perspectives and fosters greater transparency in the grant-making process. We have adopted an innovative grant-making model that allows Federation contributors to direct their Community Campaign gifts to any of four areas of need matching their philanthropic goals and personal passions. Our four Impact Areas are: 1) Helping Our Local Community in Need, 2) Strengthening Global Jewry, 3) Experiencing Judaism: Birth to Grade 12, and 4) Building Jewish Community: Post Grade 12. The model enables our donors to have the most meaningful impact with their philanthropy.

Community volunteers review grant applications to identify the most compelling, innovative projects. They pass their recommendations to our Planning and Allocations Committee, which in turn makes recommendations to the Federation's Board of Directors for final approval. For Fiscal Year 2013, the Board awarded 44 grants, 20 to projects or organizations that had never received Community Campaign funding in the past.

We are continually reviewing the grant-making process in order to deliver the greatest possible benefits to the Jewish community. The more we engage meaningfully with our community and the more we focus on practicing *tikkun olam*, the better we will become at keeping the flames of Judaism burning brightly.

Inside, you will see the Federation's work over the past year and the impact of your generous support. Together, we can build a bright and lasting Jewish future.

Thank you for your ongoing support.

A handwritten signature in blue ink that reads "Shelley Bensussen".

Shelley Bensussen
2011-2013 Board Chair

A handwritten signature in blue ink that reads "Nancy Greer".

Nancy B. Greer
Interim President & CEO

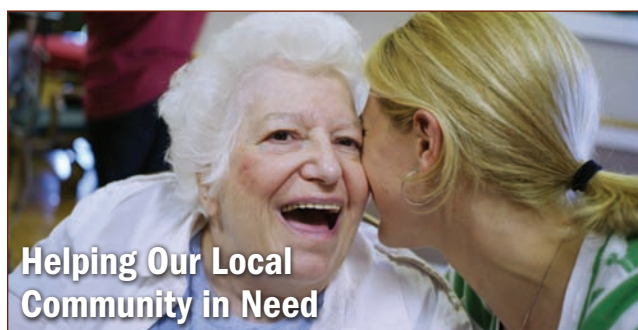
Mission Statement

The Jewish Federation of Greater Seattle works to ensure a vibrant Jewish community that is connected locally, in Israel and worldwide.

PUTTING YOUR RESOURCES TO WORK

The transformation of the Jewish Federation's grant-making model created opportunities for our partner organizations—large and small, new friends and longtime friends—to meet our shared goals more effectively during these times of economic challenge. Our four Impact Areas created a framework for amplifying the benefits of grants to people in need, locally and overseas, and to strengthening our Jewish community.

Listed below are Fiscal Year 2013 grants the Federation made in 2012, categorized by Impact Area and priorities.



Older Adults

Kline Galland - \$45,000

To establish a Medicare-certified Home Health Agency in King County, providing services such as nursing care and physical, occupational, speech, and respiratory therapy.

Stabilizing Lives in Crisis

Jewish Family Service - \$97,290

To support the Food Bank, rent assistance, counseling and job search assistance.

Jewish Family Service - \$72,960

For Project DVORA community outreach, providing domestic violence victims tools and support for personal safety and moving forward with their lives.

Mental Health

Eastern European Counseling Center - \$5,000

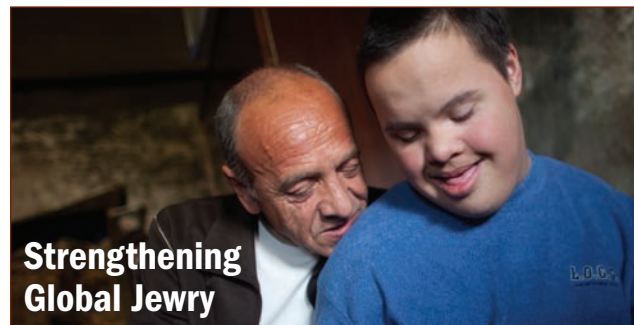
To maintain vital services, including mental health therapy, training, support groups and case management.

The Friendship Circle of Washington - \$21,750

For Sunday Circle program of movement therapy, art therapy, crafts and games for children with special needs.

Jewish Family Service - \$48,645

For Alternatives to Addiction, providing addiction services through a Jewish lens.



Human Needs/Social Services Overseas

American Jewish Joint Distribution Committee - \$48,488

To aid more than 9,000 at-risk Ukrainian Jewish children with food, medication, clothing and utility services.

Services to the Elderly in Israel and Overseas

American Jewish Joint Distribution Committee - \$48,788

To support Hesed Centers assisting more than 3,800 impoverished elderly Jews in Siberia and the Russian Far East with home care, food and medical assistance services.

Human Needs/Social Services in Israel

Leket Israel - \$22,000

To provide at-risk populations in Kiryat Malachi and Hof Ashkelon with food and other basic needs assistance.

Development Fund for Kiryat Malachi

Emergency Clinic - \$7,000

To help the clinic serve 500 low-income residents.

Partnership 2Gether - \$105,944

To support cultural programs helping poor, vulnerable Israeli citizens in Kiryat Malachi and Hof Ashkelon regions, in partnership with Federations in Phoenix and Tucson.

Selah Israel Crisis Management Center - \$25,000

To enable Selah to provide in-home visits, emergency grants, burial cost coverage, counseling, transport and legal assistance to immigrants in crisis.

YEDID for Kiryat Malachi

Citizens Rights Center - \$17,500

To help immigrants navigate government agencies to secure food and security assistance, domestic violence response and disability rights services.

Jewish Federations of North America - \$503,309

The funds were divided according to JFNA policy: 75 percent to the Jewish Agency for Israel, which strengthens connections between Israel and Jewish communities worldwide; and 25 percent to the American Jewish Joint Distribution Committee, which provides humanitarian assistance to Jewish communities in more than 70 countries.



Jewish Early Childhood

PJ Library - \$119,760

To send more than 2,000 families free books with Jewish content and engage them in family programs.

Stroum Jewish Community Center - \$90,480

To help SJCC expand Shalom Baby Program, helping new parents build social networks.

Seattle Jewish Community School - \$15,000

To enable SJCS to establish community hub for young families in geographically underserved area.

Formal Jewish Education

Jewish Federation Education Services - \$97,290

To provide leadership development, teacher training and collaborative planning for educators at Seattle Jewish day and supplementary schools.

Joint Day School Tuition Assistance - \$291,870

To enable Seattle Jewish day schools to provide scholarships for families. Samis Foundation administering program.

The Kavana Cooperative - \$5,000

To support supplemental Jewish education for elementary and middle school students on Jewish history, values, holidays and Hebrew language.

Kol HaNeshamah - \$8,000

To support development of Out of the Box! hands-on approach to Jewish education, including multi-generational learning experiences.

The Livnot Project - \$35,000

To support new approach to supplementary Jewish education for high school students, administered by Herzl-Ner Tamid and Congregation Beth Shalom, and focused on Jewish learning, social justice and hands-on activities.

Congregation Beth Hatikvah - \$7,000

To support Yesodot Hazakim, a supplemental high school program at Bremerton's Congregation Beth Hatikvah.

Teen Experiences

Community Need-Based Teen Israel Program Scholarships - \$20,000

To allow high school students to participate in an Israel experience program.

Joint Teen Israel Incentive Program - \$48,645

To provide incentive funds for Seattle-area youth groups, camps and Israel organizations to help teens participate in Israel programs.

BBYO Evergreen Region, Seattle BBYO - \$9,000

To foster young leaders through meaningful and innovative programming for youths in grades 6-12.

Jewish Day School

& Seattle Hebrew Academy - \$15,000

To fund Israel trips for JDS and SHA 8th graders. Students spend time at Kiryat Malachi, a community benefiting from Federation-supported services.

Anti-Defamation League - \$5,000

To train teens to respond to anti-Semitic incidents and stereotypes. Program operated in partnership with local synagogues and youth groups.

Jewish High - \$9,000

To provide supplementary education, including Hebrew language classes, for high school students, in collaboration with NCSY.

Jewish Camping

Joint Camp-Inter-Camp First-Time

Camper Incentive - \$58,370

To support One Happy Camper program, offering \$1,000 off first Jewish overnight camp experience of 12 or more days for Washington State residents. Incentives also available for day camps.

Stroum Jewish Community Center - \$18,400

To enable children to spend two weeks at SJCC day camp and a third week at a Washington State overnight camp.

Community Need-Based Summer

Camp Scholarships - \$48,645

To help economically challenged families send children to Jewish overnight camp.

Stroum Jewish Community Center - \$67,080

To provide camping scholarships and staff development at Northwest's largest Jewish day camp in order to increase Jewish educational programs and content.



Experiencing Judaism: Post Grade 12

Adult Education

Herzl-Ner Tamid - \$5,000

To support Torahthon, a weekend adult education program.

Building Jewish Identity

Taglit-Birthright Israel - \$10,000

To build and strengthen Jewish identity by providing free 10-day trips to Israel for Seattle-area young adults.

Hillel at University of Washington - \$20,000

To fund Hillel's Passover Seders showcasing Jewish traditions for young adults ages 18 to 32.

Stroum Jewish Community Center - \$48,645

To support holiday programs for 5,000 people, including Purim, Chanukah, Passover, Sukkot, Shavuot, Tu B'Shevat, and Shabbat.

Jewish Family Service - \$97,290

To support Family Life Education, Endless Opportunities and Shaarei Tikvah programs for families experiencing life events or difficult transitions, including courses for new parents, and activities for seniors and Jews with disabilities.

Washington State Jewish Historical Society - \$5,000

To support Instant Replay program educating Jews of all ages about famous Jewish athletes.

Washington State Holocaust

Education Resource Center - \$5,000

To support 2013 Yom Hashoah commemoration.

JT News Media - \$22,700

To enable JT News to distribute 11,000 free newspapers across Washington State, providing more Jews with information about Jewish life and community.

Young Adults

Hillel at University of Washington - \$92,425

To support Jconnect programs engaging young Jews through social, networking, educational, outdoor, social justice and Jewish content activities.

Hillel at University of Washington - \$10,000

To support Undergraduate Shabbat and holiday programming, the core of Hillel's mission for students.

Chabad at University of Washington - \$5,000

To support traditional Shabbat and holiday celebrations for UW students and other Seattle-area young adults.

The Jewish Federation of Greater Seattle meets our Jewish community's diverse needs through Federation-operated Sustaining Community programs, as well as through Community Campaign grants supporting services that our partner organizations provide.

Our Sustaining Community programs offer broad, cross-cutting benefits to the Jewish community that touch on all four Impact Areas. Summaries of their 2012 activities are provided below.



The Jewish Federation is committed to *tzedakah*, justice, and views our partnership with government as a necessary component of our work. Our work is focused on four public policy areas: children, youth and families; adults; seniors, and human and civil rights.

In 2012, the Federation's government affairs team had a hand in a notable success: marriage equality became the law of the land in Washington State. The Federation and 28 other Jewish organizations, including the Anti-Defamation League, Jewish Family Service, Herzl-Ner Tamid, Union for Reform Judaism, Washington State Holocaust Education Resource Center and the National Council of Jewish Women, supported Washington United for Marriage in defending the marriage equality law. The Federation supported marriage equality as a matter of basic religious liberty.

In 2013, the Federation's government affairs team is working to defend budgets for vital human services, including aid for disabled people, health care for low-income households, mental health care, support for single parents and resources that help refugees begin new lives. The Federation also is advocating policies to ensure religious freedoms and First Amendment rights.



The SAFE Washington program, developed by local businessman and philanthropist Mark Bloome and by the Jewish Federation, has become a national model in integrating communications, preparedness and safety training to keep the Jewish community safe from natural and human-caused disasters.

The program was developed as a local effort after the violent attack on the Federation's building in 2006. Since then, Jewish communities in other cities have looked to SAFE Washington as a model for their security and safety needs. SAFE Washington sends out incident alerts when an actual or potentially dangerous situation occurs, maintains a website with alerts, an emergency phone number and contact information for Jewish agencies, provides training in disaster response and community security preparedness, and a library of tools, templates and best practice information to help community members make their own documentation.

Says Andrew Chadick, the Federation staff member who manages SAFE Washington's communications network: "Security experts tell us 'if you see something, say something.' That's what SAFE Washington has taught our community, and more than anything, it's this sense of heightened awareness that helps keep our facilities and our institutions safe."



Women's Philanthropy at the Jewish Federation provides a place in the Seattle community for all women to come together to promote, enhance and celebrate Jewish life. The women of Seattle are committed to building a Jewish community that is both welcoming and engaging for women of all ages.

Each year, Women's Philanthropy holds events to celebrate the power of women and to raise critically needed funds for our local and global community. Thanks to the hard work and support of our amazing volunteer leadership, we created programs that provided networking opportunities, outreach, education and of course ways to express their philanthropy.

Here are a few highlights from 2012:

Connections 2012: *The Power of Passion*, the largest annual gathering of Jewish women in the Pacific Northwest, brought together more than 400 women to hear noted journalist Iris Krasnow, author of *The Secret Lives of Wives*. Iris' personal stories and reflections were clever, witty and poignant. She was entertaining, yet focused our attention on Federation and the importance of giving back to the community.

Turn the Page: An evening of women's learning received rave reviews by attendees who joined 160 community women to listen and learn from Gilah Kletenik, Congregational Scholar at Congregation Kehilath Jeshurun, who spoke on justice and collective memory as ethical imperatives for Jewish women.

Lion of Judah: In October, Lions from the Jewish Federation of Greater Seattle enjoyed an intimate gathering at the home of Susan Edelheit, 2012 Lion of Judah Chair. Our local Lions celebrated the beginning of the campaign at a luncheon program featuring internationally acclaimed concert pianist and Grammy-nominated recording artist Mona Golabek. She told a poignant and heart-wrenching true story that was enjoyed by all who attended.



The PJ Library gives young families a head start in helping their children to embrace their Jewish identity and engage with the Jewish community as they mature into adulthood.

Everything that happens during the first five years of a child's life shapes who they become as adults. That's why the Jewish Federation of Greater Seattle offers the PJ Library - an amazing service that provides free access to high-quality books and CDs with Jewish content for

parents to share with their children during family evening times.

More than 2,000 families in King and south Snohomish counties receive PJ Library books and CDs every month. In fiscal year 2012, PJ Library signed up 331 new children.

PJ Library provides a broad array of titles from which to choose, covering holidays, traditions, family values, Jewish identity and Jewish heroes. The books are carefully selected by top national Jewish educators.

PJ Library is free for the first two years a child is enrolled thanks to generous local donors, including Carl and Joann Bianco, the Auerbach Family Foundation, the Newman Family Foundation, the Eugene and Ruth Freedman Family, Herb and Lucy Pruzan, and The Harold Grinspoon Foundation in Massachusetts.



Teen Philanthropy

The Teen Philanthropy programs are central to the Jewish Federation's strategy of engaging teens in philanthropy. Through Teen Philanthropy, the Jewish Federation is strengthening participating teens' Jewish identities and growing the ranks of future community leaders.

Since its 2009 inception, Teen Philanthropy has worked with more than 50 young people in the J.Team program and has opened 21 Youth Mitzvah Funds.

J.Team includes teens in grades 9 through 12 who share a common interest in social actions. Participating teens meet monthly during the school year to take part in philanthropy learning activities and to learn more about Jewish values of giving. Since 2009, J.Team has raised \$17,645 and has supported 13 organizations.

Youth Mitzvah Fund holders invite friends and family to donate to individual funds. YMF teens do the research necessary for making wise donation choices and giving to non-profits that match their passions. Since 2009, YMF funds have raised \$27,836 and have supported 15 organizations.

Teen Philanthropy has successfully engaged youths ages 10-18 in authentic programming, keeping them engaged in Jewish life and preparing them for a lifetime of philanthropy.



Education Services

One of the most important questions facing Seattle's Jewish community is advancing excellence in Jewish education. To address that issue, the Jewish Federation of Greater Seattle sponsored an Education Summit in 2012, with the goal of "assessing the feasibility and viability of creating an independent education umbrella in Seattle."

The summit brought together more than 100 community leaders, teachers, parents and community members. Keynote Jonathan Woocher, Chief Ideas Officer of the Jewish Education Service of North America, shared cutting-edge trends in Jewish education from around the country and insights about the changing nature of centralized Jewish education agencies.

After the summit, lay leaders who serve on the Federation's Jewish education task force began work on developing a Jewish Education Planning Group.

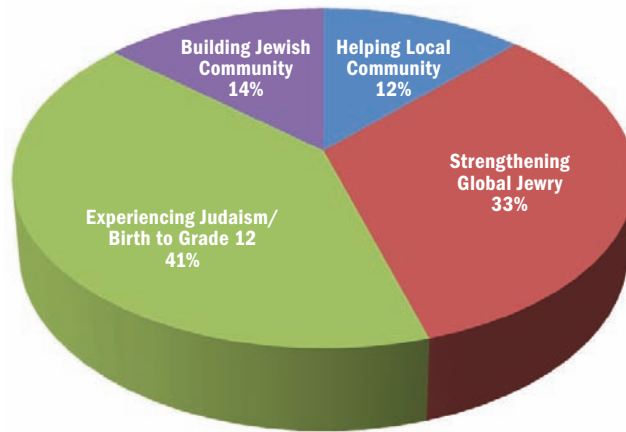
In another important step toward enhancing Jewish education, the Federation funded the Jewish Early Childhood Education (ECE) Fellowship for Leadership and Excellence. The Fellowship program is designed to foster collaboration and enhance professional development, help schools shift from a child-centered educational model to a whole-family approach and deepen Jewish engagement.

Goals of the fellowship include:

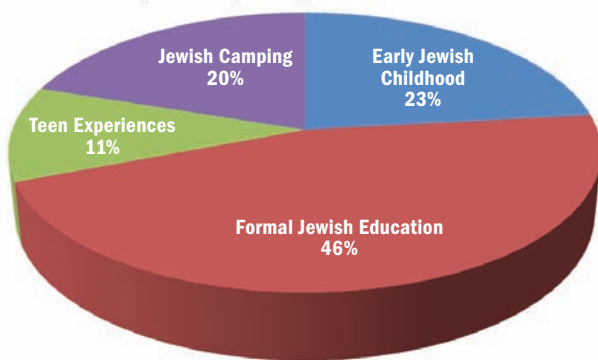
- Enhance teachers' leadership qualities
- Increase teachers' Judaic knowledge
- Increase Judaic classroom content
- Reinforce best ECE practices
- Increase teacher retention and satisfaction
- Improve student success

Participating schools are Seattle Hebrew Academy, Menachem Mendel Seattle Cheder, Beth Shalom Early Childhood Center, Jennifer Rosen Meade Preschool, SJCC Early Childhood School and Jewish Day School of Metropolitan Seattle.

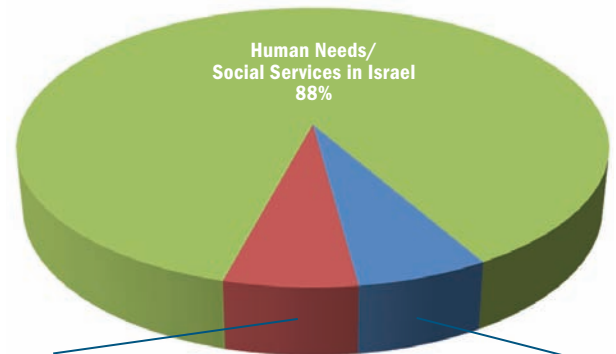
COMMUNITY CAMPAIGN GRANTS



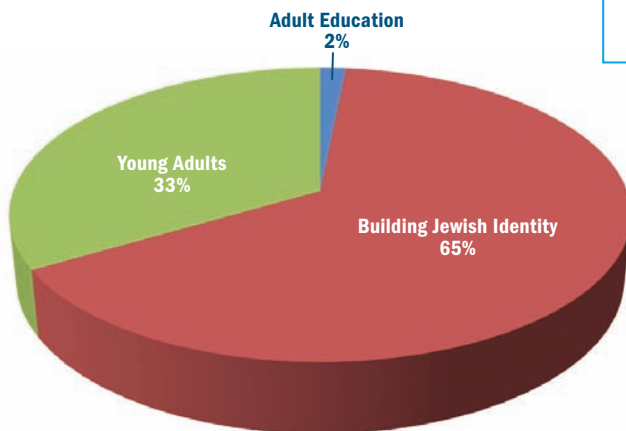
Fiscal 2013 Community Campaign Allocations



Experiencing Judaism: Birth to Grade 12

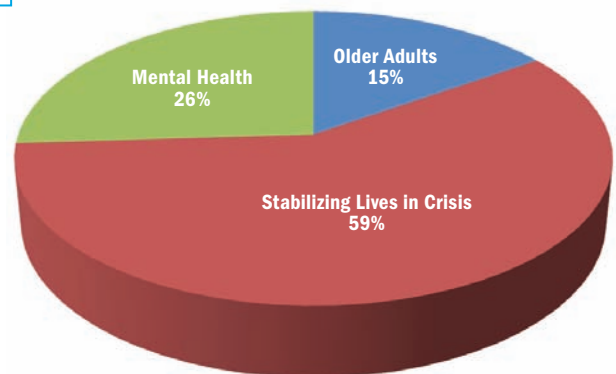


Strengthening Global Jewry



Building Jewish Community: Post Grade 12

Impact Areas



Helping Our Local Community in Need

THE YEAR IN NUMBERS

2,470 donors during 2012 Campaign Year

\$2,358,274 allocated through Community Campaign

444 attendees at 2012 Connections

401 attendees at Education Services programs

1,840 students reached by **258 educators** participating in Education Services programs

331 new children enrolled in PJ Library

\$5,082 awarded to non-profits via Youth Mitzvah Fund

\$7,100 awarded to non-profits by J.Team

232 new children received camp scholarships

\$101,556 awarded in camp scholarships

25 students awarded Israel scholarships

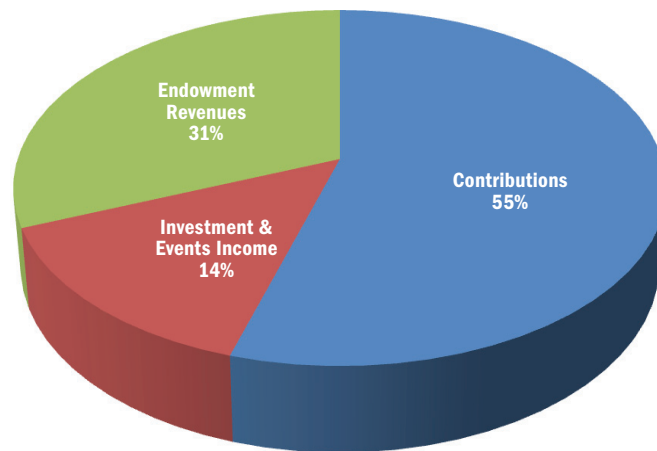
\$69,153 awarded in Israel scholarships

\$68,000 awarded in Small & Simple Grants

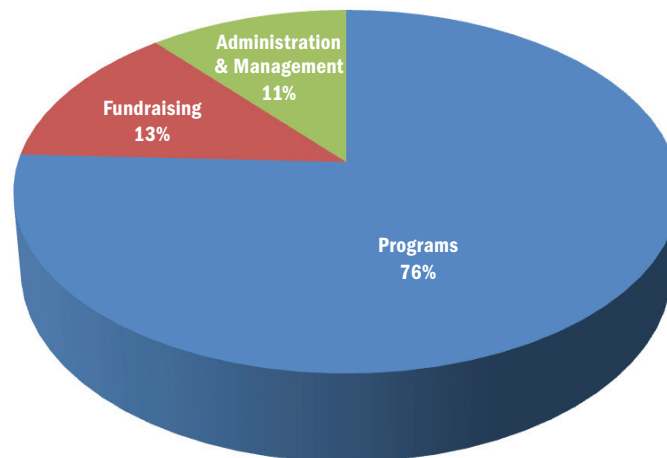
\$16,000 awarded in Women's Endowment Fund Grants.

\$10,600 awarded in Small Agency Sustainability Grants

215 active participants in SAFE Washington



Total Fiscal 2012 Revenues



Total Fiscal 2012 Expenses

2012 Community Partners

Jewish Education

Alexander Muss High School in Israel
 BBYO Evergreen
 Education Services of the Jewish Federation of Greater Seattle
 Jewish Day School of Metropolitan Seattle
 Livnot Project
 Menachem Mendel Seattle Cheder
 Northwest Yeshiva High School
 Seattle Hebrew Academy
 Seattle Jewish Community School
 Seattle NCSY
 Torah Day School

World Jewry

American Jewish Joint Distribution Committee
 Development Fund for Kiryat Malachi
 Eastern European Counseling Center
 Jewish Agency for Israel

Jewish Federations of North America
 Leket Israel
 Selah: Israel Crisis Management Center
 Partnership 2Gether with Kiryat Malachi-Hof Ashkelon
 YEDID: Kiryat Malachi Citizens Rights Centers

Jewish Identity/Community Building

Anti-Defamation League
 Congregation Beth Hatikvah
 Bikur Cholim Machzikay Hadath
 Camp Solomon Schechter
 Chabad at University of Washington
 Herzl-Ner Tamid Conservative Synagogue
 Hillel at the University of Washington
 Hillel at Washington State University
 Hillel at Western Washington University
 JTNews
 The Kavana Cooperative

Kol HaNeshamah
 Nesiya
 North American Federation of Temple Youth
 PJ Library
 Seattle Jewish Chorale
 Sephardic Adventure Camp
 Stroum Jewish Community Center
 Taglit-Birthright Israel
 United Synagogue Youth
 URJ Camp Kalsman
 Washington State Holocaust Education Resource Center
 Washington State Jewish Historical Society
 Young Judea

Human Need

Caroline Kline Galland & Affiliates
 The Friendship Circle of Washington
 Jewish Family Service

Corporate Partners

Our campaign could not succeed without the generous backing of our Corporate Sponsors. We appreciate their enthusiastic support for furthering Jewish engagement, helping people in need and connecting Seattle to Israel and the global Jewish community.

Platinum (\$7,500 or more)

SEI
 Wells Fargo Advisors

Gold (\$2,500 or more)

Alaska Airlines
 Alphagraphics
 Everett Floral & Gifts
 The Fisher Family
 Hyatt Regency Bellevue
 Nosh Away
 SanMar
 Savor... McCaw Hall

Silver (\$1,000 or more)

Delta Airlines
 Island Crust Café
 PSAV Presentation Services
 Seattle Iron & Metals
 Amy Sidell; Carol & Alan Sidell;
 Judy & Marc Sidell; Craig &
 Sheila Sternberg
 United Insurance Brokers
 Wolff Defense

Additional (up to \$1,000)

Classic Pianos
 The Elliott Bay Book Company

Great Wolf Lodge
 John L. Scott Realty | Sandra Levin
 Keep Posted
 Paragon Investment Management
 Red Door Spas
 Sadis Filmworks
 Seattle Va'ad
 Tatters LLC | Michelle Tessler

Endowment Honor Roll

The Seattle Jewish Community Endowment Fund is an integral part of the Jewish Federation of Greater Seattle. We recognize the following funds that were in existence on June 30, 2012. Funds that were established in Fiscal year 2012 are marked **bold** and those that grew through additional contributions are marked *italic*.

Agency Participation Funds

Congregation Beth Shalom - Capital
 Congregation Beth Shalom - Endowment
 Congregation Ezra Bessaroth
 Endowment Fund
Hillel Foundation for Jewish Life at the UW
Jewish Day School - Endowment
*Seattle Hebrew Academy's Henry Isaacson
 Memorial Scholarship Fund*
 SHA Unrestricted Endowment Fund
 Washington State Jewish Historical Society

Charitable Gift Annuities

Mark Balter

Herb and Shirley Bridge

Herb Bridge

John Friedmann
 Madeleine Hagen
 Elaine D. Henley
 Gerald S. and Mary C. Lellouche

Arthur and Alice Siegal

Charitable Trusts

Sid Shapiro Charitable
 Remainder Annuity Trust

Elisa F. Thomases Charitable Remainder Unitrust

Donor Advised Funds (DAFs)

ABC Pacific DAF
Adler Family DAF
 Joan and Morrie Alhadeff Memorial Fund
 Rachel and Nissim Altabet Memorial Fund
Richard and Dianne Arensberg DAF
 Raymond and Joyce Benezra Family DAF
 Barbara and Sandy Bernbaum Family DAF

Ben Bridge Family DAF
 Jonathan and Bobbe Bridge Family DAF
 Pearl and Bernie Brotman DAF
Robert and Bonnie Cape DAF
Orville and Victoria Cohen DAF
 Merle and Lorraine Cohn DAF
 Aaron L. and Edith Dichter DAF
Dolin and Madsen DAF
 William Donner DAF
 Donner - Perlman DAF
 Henry and Mila Eisenhardt DAF
 Donald and Patricia Esfeld DAF
 Sol and Sadie Esfeld Memorial Fund
 Sandy and Henry Friedman DAF
 Raymond and Jeannette Galante DAF
 Gendler Family DAF
 Gesher Fund
 Gordon Godfred DAF
 Jay Goldberg Memorial Fund
Ari Grashin "It's OK" Memorial Fund
 Stanley and Berthe Habib DAF
 Eddie and Marguerite Hasson DAF
 HMB DAF
 Sidney Z. Jaffe Memorial Fund
 JCA DAF
 Mary Kleinberg DAF
 Richard Koch DAF
 Raquel and Simon Koz DAF
 Krasik-Geiger Family DAF
Mark Litt Family DAF
 Hal and Inge Marcus DAF
 Nancy and Philip Moss DAF
 Jack and Dorothy Muscatel DAF
 Lawrence and Ann Nieder DAF

Louis and Emma Ostroff Memorial Fund
 Jack Polack Memorial Fund
Dean and Gwenn Polik DAF
 Harvey S. and Judy G. Poll DAF
 Hermine R. Pruzan Memorial Fund
Lucy and Herb Pruzan DAF
 Reiter Family DAF
 Robert L. Richmond DAF
 Barri Rind DAF
 David R. Rind DAF
 Ritt Family DAF
 Aaron & Rebecca Rosen DAF
 Devin J. & Rachel M. Rosen Fund
 Harvey Rosen DAF
 Nathan and Judy Ross DAF
 Schwartz-Fisher DAF
 Robin and Sid Shapiro DAF
 Stanley A. and Iris A. Sigel DAF
 Philip and Snookey Simon DAF
 Jordan Sloan DAF
 Joshua Sloan DAF
*Michael David Spektor and
 Wendy Shultz Spektor Family DAF*
 Spring Family Fund
 Jack, Frieda, and Roosevelt Steinberg DAF
 Ron H. Steinberg Memorial Fund
 Max and Gussie Stusser
 Memorial DAF
 Sussman Family DAF
 David and Karen Tarica DAF
Torah Aura DAF
 Louis and Bayla Treiger DAF
Harry and Elsie Weiner DAF
 Simon Weinstein DAF
 Herbert Wittenberg DAF

Lion of Judah

Endowment (LOJE) Funds

Joyce Benezra LOJE Fund
Becky Benaroya LOJE Fund
Gail Bereny LOJE Fund
Fannie Feinberg LOJE Fund
Eileen Gilman LOJE
Lillian Kaplan LOJE
Hermine Pruzan LOJE Fund

Paula Rose LOJE Fund

Perpetual Annual Campaign

Endowment (PACE) Funds

Becky and Jack Benaroya PACE Fund
Robert and Barbara Bridge PACE
Lillian and Victor Calderon PACE Fund

Muriel Bach Diamond PACE Fund

Herman and Zelda Feinberg PACE Fund
William C. Hardman PACE Fund
The Milton and Pauline Hecht PACE
Charles Kaplan PACE Fund

Philip Kaplan PACE Fund

Samuel and Harriet LeBid
Memorial PACE Fund

Miriam Morgan PACE Fund

Melville and Sylvia Oseran PACE Fund

Perpetual Annual Campaign Fund (pooled)

Edward Stern Family Fund

Samuel and Althea Stroum PACE Fund

Leonard and Helen Tall
Memorial PACE Fund

Restricted Funds

Alexander Muss Scholarship Fund
Charles D. and Doris L. Alhadeff
Memorial Fund

Ike Alhadeff Memorial Fund

Atlas Scholarship Fund

Berol-Shindell Hillel Scholarship Fund

Birulin Family Scholarship Fund

Bob and Bobbi Bridge
Jewish Teachers Endowment Fund

Danz Philanthropic Fund

Moe and Myra Dinner Memorial Fund

Sara and Max Efron Memorial Fund

Morris A. Goldberg Memorial
Scholarship Fund

Bertha and Samuel Green
Memorial Fund

Merle P. Griff and Nadine Griff Mack
Memorial Fund

Bill Halpern SAEJ Scholarship Fund

Holocaust Memorial Fund

Kaplan Community
Service Award Fund

*Charles and Lillian Kaplan
Scholarship Fund*

Stephen A. Kreyes Memorial Fund

NCJW Julie Feuerberg Memorial Fund

NCJW Seattle Section Joyce and Raymond
Benezra Scholarship Fund

Meta Rosenbaum Memorial Fund

Schaerf Memorial Fund

Seattle Hebrew Academy
Endowment Fund

Edna C. Simon Memorial Fund

Spitzer Young Leadership
Award Fund

Althea Stroum
Woman of Distinction
Award Tribute Fund

Pam Waechter Memorial Fund

Washington State Holocaust
Educational Endowment Fund

*Women's Endowment Fund
of the Seattle Jewish Community*

Anna and Leo Zafran
Memorial Fund for UJA Israel

Supporting Foundations

The David and Cathy Habib
Foundation

Jewish Day School
Supporting Foundation

Samuel Israel Foundation

Unrestricted Funds

Emergency Capital Needs Fund

Federation Endowment Fund

Milk and Honey Endowment Fund

Special Initiatives Fund

Jack J. & Charlotte Spitzer Young Leadership Award

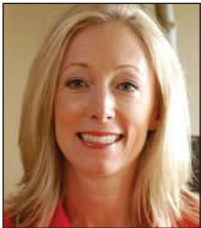


Zane Brown, Jr.

Zane Brown, Jr. serves on the Federation Board and on the Board of Washington State AIPAC. Zane also has served as Board and President of Camp Solomon Schechter, where he

was a camper and met his wife Melissa 36 years ago. He is a graduate of Leadership Tomorrow and a participant in the Wexner Heritage Program. Zane works as Associate General Counsel, Labor and Employment, at Amazon.com.

Kim Fisher



Kim Fisher has served on the board of the Stroum Jewish Community Center since 2008. Kim also has served as a volunteer and board member for Kindering, a non-profit neurodevelopmental center for young

children with special needs. With her husband Craig, Kim helped create the Fisher Family & Friends Golf Invitational and Auction, which has raised \$5 million for the Marsha Rivkin Center for Ovarian Cancer Research. She has created an endowment at Children's Hospital and Regional Medical Center to fund epilepsy research. Her professional career includes work at PricewaterhouseCoopers LLP and Amazon.com.

Pamela Waechter ^{z"l} Jewish Communal Professional Award



Marcie Wirth

Marcie Wirth has been involved with the Stroum Jewish Community Center for more than three decades, since her start as a volunteer member of the parents committee.

Her volunteering took her to the J's Board of Directors, and she won the Max Kaminoff Volunteer of the Year Award in 1986. Marcie joined the J's staff in 1990 and has served as Special Events Manager since 2000.

Dr. Charles & Lillian Kaplan Board Chair's Award for Outstanding Service



Corey Salka

Corey Salka chairs the Center for Jewish Philanthropy Advisory Committee and has served on the Federation's Board since 2010.

Corey was instrumental in developing and rolling out the Federation's philanthropic model. He also serves on the boards of Camp Solomon Schechter and the Northwest Energy Angels, a cleantech investment group. Previously, he spent 18 years at Microsoft, where he held senior roles in product strategy and design, R&D management, mergers and acquisitions, and partner ecosystem development. Corey is honored by the opportunity to facilitate change and innovation in Seattle's Jewish community.

Staff Service Recognition



Richard Fruchter

Richard Fruchter served as The Federation's CEO from 2006 until 2012.

Andrew Chadick

Andrew Chadick has served as Systems Administrator since 2007.



Lynn Redlich

Lynn Redlich served as Executive Assistant and Human Resources Coordinator from 2006 to 2013.

Amy Wasser-Simpson

Amy Wasser-Simpson served as Vice President for Planning & Community Services from 2003-2012.



Board Chair

Shelley Bensussen*

Immediate Past Board Chair

Ron Leibsohn*

Board of Directors

Carl Bianco, Vice Chair*

David Ellenhorn, Vice Chair*

Stephen Loeb, Vice Chair*

Andrew Cohen, Treasurer*

Don Etsekson, Secretary*

Celie Brown*

Jack Almo*

Naomi Newman*

David Stiefel*

Zane Brown, Jr.*

Iantha Sidell*

Robin Boehler

Corey Salka

Peter Horvitz

Jerry Anches

Sarah Boden

Marshall Brumer

Mike Dickstein

Lisa Fein

Hal Jackson

Jordan Lott

Dan Lowen

Phil Roberts

Phillip Stein

*Executive Committee

Ex-Officio Members

Merle Cohn

Ray Galante

Eileen Gilman

Frankie Loeb

Gerald Ostroff

Herb Pruzan

Lucy Pruzan

Michele Rosen

Herman Sarkowsky

Michael Spektor

Rob Spitzer

Irwin Treiger

Rabbinic Organization Representatives

Rabbi Jonathan Singer

Albert S. Maimon

2011-2012 Executive Team

Richard Fruchter, President & CEO

Nancy Greer, Chief Operating Officer

David Chivo, Vice President,
Center for Jewish Philanthropy

Amy Wasser-Simpson, Vice President,
Planning & Community Services

Planning & Allocation

Jack Almo, *Chair*
Shelley Bensussen
Sarah Boden
Robin Boehler
Celie Brown
Andrew Cohen
David Ellenhorn
Richard Fruchter
Lori Gradinger
Hal Jackson
Dan Lowen
Moss Patashnik
Corey Salka
Iantha Sidell
Phillip Stein
Amy Wasser-Simpson
Rob Dolin
Ron Leibsohn
Nancy Greer

Work Group:

Experiencing Judaism: Birth to Grade 12

Rob Dolin
Moss Patashnik
Zane Brown, Jr.
Ellice Ellenhorn
Rob Gladstein
Deb Klein
Jordan Lott
Patty Willner

Work Group:

Helping Our Local Community in Need

Sarah Boden
Phil Roberts
Larry Blades
Henry Boyar
Arlene Cohen
Nancy Geiger
Rochelle Roseman
Leah Saltzman

Work Group:

Strengthening Global Jewry

Iantha Sidell
Phil Stein
Nance Adler
Jacob Engelstein
Barbara Goldberg
Jon Levin
Wayne Morse
Lucy Pruzan

Work Group:

Building Jewish

Community: Post Grade 12

Hal Jackson
Lori Gradinger
Neil Halpern
Kathryn Korch
Andrea Lott
Debra Mailman
Jon Schwartz
Diane Sigel-Steinman

Center for

Jewish Philanthropy Advisory Committee

Corey Salka, *Chair*
Jack Almo
Robin Boehler
Carol Gown
Shelley Bensussen
Celie Brown
Andrew Cohen
Mike Dickstein
David Ellenhorn
Don Etsekson
Ron Leibsohn
Steve Loeb
Dan Lowen
Iantha Sidell

Governance

Ron Leibsohn, *Chair*
Celie Brown
Iantha Sidell
Robin Boehler
Richard Fruchter
Shelley Bensussen

Donor Engagement

Celie Brown, *Chair*
Nance Adler
Steve Adler
Jack Almo
Joan Barokas
Shelley Bensussen
Robin Boehler
Ed Bridge
Zane Brown, Jr.
Zach Carstensen
David Chivo
Andrew Cohen
Phil Cohn
Wendy Dore
Richard Fruchter
Lauren Gersch

Carol Gown
David Isenberg
Stuart Kaufman
Ron Leibsohn
Dan Lowen
Howard Lowen
Jonathan Newman
Naomi Newman
Tina Novick
Lucy Pruzan
Arnold Reich
Philip Roberts
Corey Salka
Michelle Shriki
David Shuster
Iantha Sidell
Robert Spitzer
Mark Stiefel
Phill Stein
Amy Wasser-Simpson
Eileen Gilman
Steve Boehler
Jerry Anches
Neil Ross

Finance & Administration

Andrew Cohen, *Chair*
Carl Bianco
Celie Brown
David Chivo
David Stiefel
Don Etsekson
Eric Hasson
Howard Lowen
Jean Callahan
Jerry Anches
Lisa Fein
Nancy Greer
Richard Fruchter
Amy Wasser-Simpson
Rob Dolin
Robin Boehler
Ron Werth
Ron Leibsohn
Shelley Bensussen
Sonny Putter
Stephen Loeb

Investment

Peter Horvitz, *Chair*
Shelley Bensussen
Robin Boehler
David Ellenhorn
Charles R. Gottschalk

Roy A. Hamrick
Larry J. Katz
Ron Leibsohn
Stephen Loeb
Darcy MacLaren
Herb Pruzan
Chaim Rosenbaum
Corey Salka
Joseph L. Schocken
David Stiefel

Planned Giving

David Stiefel, *Chair*
Shelley Bensussen
Robin Boehler
Celie Brown
Rob Dolin
Rochelle Goffe
Carol Gown
Michele Hasson
Steve Hemmat
Ron Leibsohn
Dianne Loeb
Corey Salka
Carlyn Steiner
Rod Waldbaum

Audit Committee

Eric Hasson, *Chair*
Andrew Cohen
David Stiefel
Jean Callahan
Richard Fruchter
Nancy Greer
Nolan Newman
Shelley Bensussen
Steve Loeb

Special Initiatives Fund Committee

Dan Lowen, *Chair*
Albert S. Maimon
Carin Jacobson
Cathy Lowen
Howie Klein
Jack Almo
Kathleen Spitzer
Lisa Fein
Lisa Orlick-Salka
Lynn Fainsilber-Katz
Margy Crosby
Nancy Greer
Noa Guter
Richard Fruchter
Sylvia Sterne
Josh Adler

Community Relations

Ron Leibsohn, *Chair*
Linda Clifton
Diane Loeb
Robert Spitzer
Rabbi Jonathan Singer
Herb Pruzan
David Ellenhorn
Phil Roberts
Dr. Michael Spektor
Shelley Bensussen
Celie Brown

JTNews

Peter Horvitz, *Chair*
Robin Boehler
Andrew Cohen
Cynthia Flash Hemphill
Nancy Greer
Aimee Johnson
Ron Leibsohn
Stan Mark
Cantor David Serkin-Poole
Leland Rockoff
Richard Fruchter
Shelley Bensussen

Women's Philanthropy

Naomi Newman
Women's Philanthropy Chair
Susan Edelheit
Lion of Judah Chair
Andrea Lott & Kim Fisher
Connections Co-Chairs
Elizabeth Siegel
Turn the Page Chair

Cardozo Society

Aric Bomsztyk, *Co-Chair*
Daniel A. Swedlow, *Co-Chair*

Maimonides

Dr. David Isenberg, *Co-Chair*
Dr. Donald Shifrin, *Co-Chair*

Charles & Ann Bianco Building

2031 Third Avenue, Seattle, WA 98121

Main office: 206.443.5400

info@jewishinseattle.org

www.jewishinseattle.org



The Jewish Federation
OF GREATER SEATTLE

THE **STRENGTH** OF A PEOPLE.
THE **POWER** OF COMMUNITY.