



JEWISH FEDERATION OF GREATER SEATTLE

2015 | ANNUAL REPORT



A MESSAGE FROM OUR LEADERS



Dan Lowen

Dan Lowen
Board Chair



Keith Dvorchik

Keith Dvorchik
President & CEO

The fiscal year that ended on June 30, 2015 was a time of introspection for the Jewish Federation of Greater Seattle. We spent the year examining and re-imagining the value that we offer our expanding community during a time of great growth, while continuing to provide core services to the Puget Sound Jewish community.

Our new vision is creating Jewish Connections for Life, to ensure there are accessible entry points to Jewish life for a community that is increasing in both size and diversity. Our change in focus was informed by one of the most important projects we undertook in fiscal year 2015 – completing and

sharing the findings of the 2014 Greater Seattle Jewish Community Study. As further detailed on Pages 4-5, the study documented the dramatic growth in Jewish Puget Sound between 2001 and 2014, and the community's diversity of engagement interests and geographic location.

Our careful analysis of the study's findings over the latter half of fiscal year 2015 resulted in our commitment to create Jewish Connections for Life, which will impact the community in two ways: 1) Continuing and deepening investments in Core Programs, including Jewish engagement, advocacy, Israel and World Jewry, and building a Jewish legacy; and 2) Introducing High-Impact Investments, with the initial three focusing on Jewish Neighborhood Connections, Lifelong Learning, and Families with Young Children. You will hear much more about these initiatives in the months and years ahead.

As we planned for the future and executed our Core Programs, we continued to serve the community through the last allocation of Community Campaign Grants. Looking ahead, our plans to create and expand on-ramps to Jewish life will benefit all Jewish organizations. In the pages that follow, we report to you our accomplishments and activities in fiscal year 2015 as we moved through a busy year of reflection and planning to serve Jewish Puget Sound even more effectively.

As always, we thank you for your generous support of our work. We depend on **partners** to serve our community, and you are our most important partners.

BY THE NUMBERS

JEWISH ENGAGEMENT



239 Children
Received Camp
Scholarships



250 Neighborhood
Song & Story Events



Created programs for
Jews in their 30s and 40s

ADVOCACY



12 Priorities
Passed in WA Legislature



250+ Participants
in SAFE Washington

ISRAEL & WORLD JEWRY



25 TEENS
Received Israel Scholarships

13 PARTICIPANTS
In journey to Jewish Cuba



\$60 MILLION
Endowment funds

\$2,168,826
In Endowment Grants

GRANTS



\$2,152,648 allocated in FY2016 Community Campaign Grants

\$63,975 awarded in Ignition Grants

\$31,500 awarded in Women's Endowment Fund Grants for FY 2015 and 2016

\$27,400 awarded in Small Agency Sustainability Grants

2014 GREATER SEATTLE JEWISH COMMUNITY STUDY

The 2014 Greater Seattle Jewish Community Study is an in-depth look at Jewish Puget Sound. It includes information about community demographics, needs, wants, affiliations and attitudes on a wide range of important issues. The study reached several important conclusions touching on the future of Jewish life in our region.

The Jewish Community Is Growing Significantly

The Jewish population in the Puget Sound region has grown 70 percent since the last Jewish community study was carried out in 2000-01. The estimated Jewish population totals 63,400 people living in 33,700 households. The community is likely to experience significant natural increase in the next one to two decades as a result of family formation and childbirth.

The Jewish Community Values Engagement

The study showed that Jewish Puget Sound values Jewish programs, including culture, community service, education, and programs tailored to widely diverse interests. Nearly half surveyed said they would be interested in participating in a range of Jewish programs, and more than half would be interested in community service opportunities.

The Jewish Community Is Diverse and Spread Across the Region

The spread-out population and the area's increasing traffic congestion have important implications for connecting to Jewish life.

Further Research Is Necessary to Identify and Develop Engagement Opportunities

The Jewish Federation plans to carry out "deep-dive" research to develop Jewish Neighborhood Connections - accessible opportunities to engage in Jewish life.

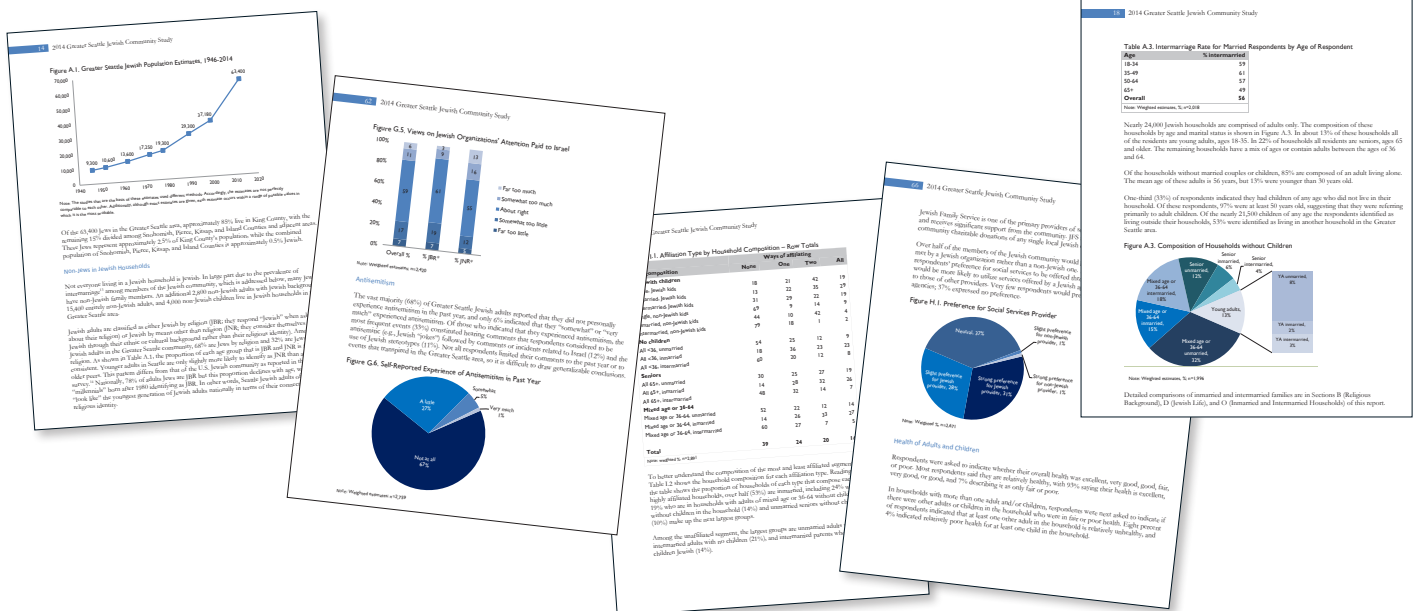


Figure A.1. Greater Seattle Jewish Population Estimates, 1940-2014

Year	Population
1940	9,500
1950	10,500
1960	12,500
1970	15,500
1980	18,500
1990	22,500
2000	37,000
2014	63,400

Figure G.5. Views on Jewish Organizational Attention Paid to Israel

Response	Percentage
Far too much	1%
Somewhat too much	10%
About right	41%
Somewhat too little	38%
Far too little	10%

Table A.2. Intermarriage Rate for Married Respondents by Age of Respondent

Age	% Intermarried
18-24	27
25-49	41
50-64	27
65+	49
Overall	36

Table A.3. Composition of Households without Children

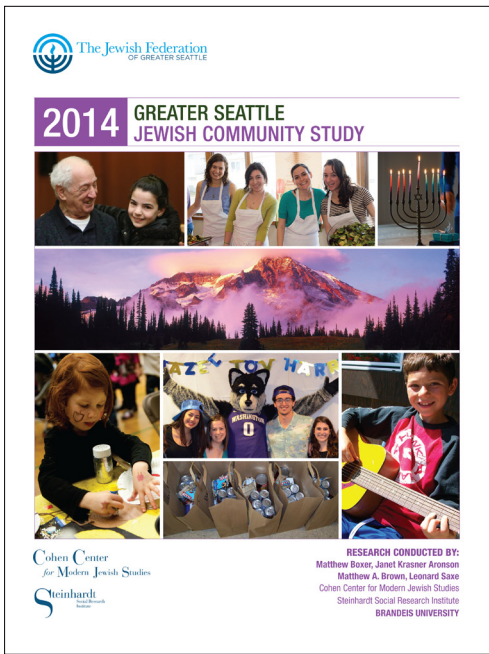
Household Type	Percentage
Head of household, 18+	18%
Head of household, 18-24	12%
Head of household, 25-49	10%
Head of household, 50-64	15%
Head of household, 65+	45%

Figure H.1. Preference for Social Service Provider

Provider Type	Percentage
Religious	20%
Secular	35%
Other	45%

How the Study Results Will Be Used

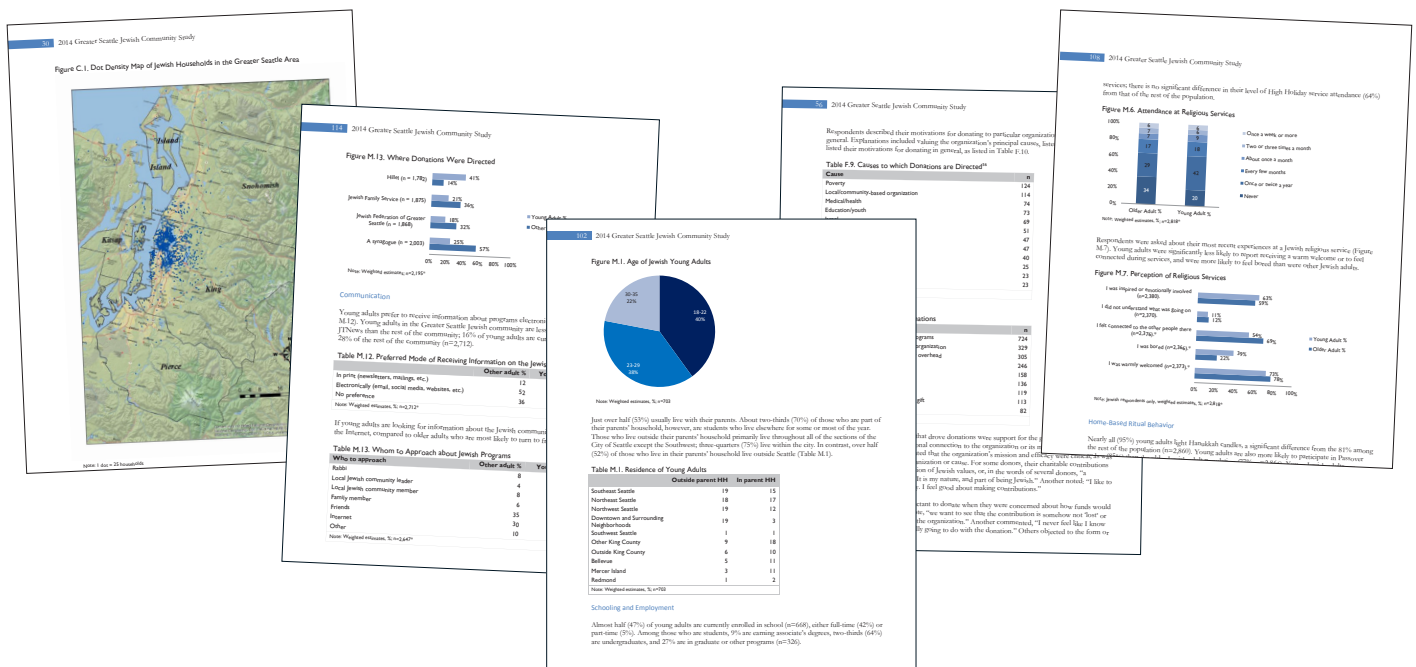
The Jewish Federation of Greater Seattle has relied on the 2014 Greater Seattle Jewish Community Study to inform its new vision of creating Jewish Connections for Life – ensuring that all Jews can participate in Jewish life in any way that fits their interests and passions, at every stage of life.



Creating Jewish Connections for Life is a two-pronged strategy.

- 1) We are continuing and deepening our investments in our core work, which opens doors to Jewish engagement, advocates for community priorities, builds people-to-people bonds with Israel and World Jewry, and secures a financial foundation for Jewish engagement and other services for generations to come.
- 2) We will make High-Impact Investments, beginning in 2016, that direct significant resources for a three- to five-year period at targeted areas for creating and strengthening Jewish engagement. High-Impact Investments will be selected based on empirical data, have measurable outcomes and may be carried out with strategically selected partner organizations. Our initial High-Impact Investment will focus on Jewish Neighborhood Connections.

To learn more about Jewish Connections for Life, please visit jewishinseattle.org/jewish-connections-life



CORE PROGRAMS



ADVOCACY

The Federation serves as the community's voice with decision-makers at all levels of government. We work with area leaders and organizations to collaboratively determine public policy priorities, and then work with elected officials to move our priorities forward. Our policy agenda is rooted in Jewish values, including tzedakah and tikkun olam. We give voice to the voiceless, and rally the community around human services, civil rights and other high-priority issues.

Our work in the Washington Legislature during its 2015 session paid off, ensuring that the state's 2015-2017 biennial budget reflects our community's values. Highlights include:

Human Services - Full funding of food assistance helping children, families and the elderly; Reversing cuts to emergency cash grants for very poor families

Education - New funding for voluntary home visits to help vulnerable and first-time parents; Significant investments in early learning programs

Health Care - Funds for developmental and autism screenings for babies; Funds for mental health improvements, including better crisis treatment, more inpatient beds and better access to outpatient treatment

COMMUNITY SECURITY



SAFE Washington, a Mark Bloome initiative, is a community security partnership of the Jewish Federation of Greater Seattle, ADL, Temple De Hirsch Sinai, Secure Community Networks, Setracon and law enforcement.

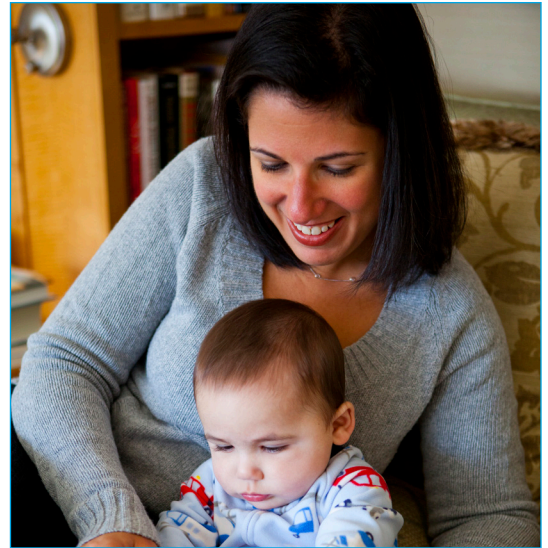
More than 250 participants from over 100 public and private agencies are active in the partnership, which operates a communications network sending alerts of real-time threats, offers preparedness trainings, and provides opportunities to seek security grants.

A highlight of SAFE Washington activities in fiscal year 2015 was security training for synagogues around the High Holy Days, which included speakers from the Seattle Police Department, Washington State Fusion Center and Setracon.

Another highlight was community security tips included in Federation e-blasts sent to the community during the Gaza war in the summer of 2014. SAFE Washington sends community security information to participating agencies every year around the High Holidays and throughout the year when warranted.

PJ LIBRARY®

The PJ Library®, a program of the Harold Grinspoon Foundation, is a fun and imaginative entry point into Jewish life for families with young children. Every month, local families with children ages 6 months to 8 years receive, free of charge, the best in Jewish children's books and music. Children ages 9 to 11 can join PJ Our Way™, a new free program that lets kids pick the books they want. Every year, 20,000 books are sent to kids in King and south Snohomish Counties, bringing the cumulative total to 100,000 as of November 2015.



PAVE SEATTLE

PAVE Seattle is an exciting engagement program that was launched in 2015. PAVE brings together Jews in their 30s and 40s around shared interests, to be Jewish and do Jewish things. PAVE offers professional networking groups, including the Cardozo Society for attorneys and J-Tech for IT professionals, as well as holiday celebrations, social and recreational gatherings, and interest groups, such as a book club and knitting circle.

WELCOMING NEWCOMERS

It's no secret that Jewish Puget Sound is growing. **The Welcome Committee acts as a concierge service introducing newcomers to local Jewish life by providing resources and connections via personal contact.** The Welcome Committee has helped more than 200 people over the past year engage in local Jewish life.



CORE PROGRAMS

SCHOLARSHIPS

In partnership with generous organizations and individual donors, the Federation lowers barriers to participating in Jewish life by offering a range of scholarships. Need-based scholarships and the One Happy Camper first-time camper incentive grant program help children have the unforgettable experience of going to Jewish overnight summer camp. For the 2015 camping season, the Federation awarded 239 need-based scholarships and 193 One Happy Camper grants.

Other Federation scholarships enable children to attend local Jewish day schools and teens to go on life-changing journeys to Israel. For the 2015 travel season, 25 teens were awarded Israel Experience scholarships.



LEADERSHIP DEVELOPMENT

The Federation supports Jewish leadership development programs that ensure the hard-working organizations providing high-quality programs and services to Jewish Puget Sound have a strong ladder of leaders-in-waiting.

The Wexner Heritage Program, which the Federation supports in partnership with the SAMIS Foundation, deepens the Jewish knowledge of up-and-coming leaders.

In September 2014, a group of 18 leaders graduated from this prestigious program. A new cohort will begin the program in 2019. The Advanced Leadership Development Program, run by PAVE, is a one-year program that prepares emerging leaders to enter the leadership ladder. There are 16 participants in the 2015-2016 ALDP program.

COMMUNICATIONS

The Federation strengthens Jewish engagement through three exciting communications products and services, each of which was introduced in 2015. *Jewish in Seattle*, the bimonthly magazine that debuted in August, creates Jewish connections with thought-provoking stories and features that inspire, educate and challenge. *Jewish Connections*, a quarterly newsletter that began publication in June, explores the many dimensions of local Jewish life. *Puget Sound Jewish Life*, a weekly e-blast that began in April, keeps the community informed about upcoming events.



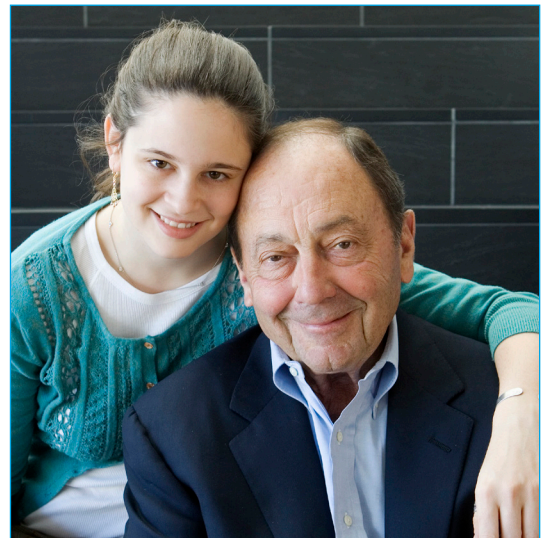
ISRAEL AND WORLD JEWRY

The Federation creates people-to-people connections between Jews locally and in Israel and around the world. In March 2015, the Federation helped organize and lead its first group journey to an overseas community – a fascinating trip to the small but thriving Jewish community in Cuba. The Federation also supports visits by Israeli emissaries, such as the *shinshinim* who arrived for a year-long stay in September 2015, as part of a Federation partnership with Congregation Beth Shalom, Temple De Hirsch Sinai, URJ Camp Kalsman and Camp Solomon Schechter to help local Jews learn about Israeli life and culture through personal interaction. For Jews in need overseas, the Federation lends a helping hand by supporting food assistance, health care and other vital services.

JEWISH LEGACY

The Federation in August 2015 was awarded a grant from the Harold Grinspoon Foundation for the LIFE&LEGACY™ program, which will support training and incentive grants for 10 Jewish community agencies to build solid financial endowments for their vital programs and services. Nationally, close to 300 organizations participate in LIFE & LEGACY™, securing nearly \$258 million in endowment commitments.

The Federation's endowment program now has over \$60 million under professional management, helping individuals, families and organizations ensure fulfillment of their financial and philanthropic goals. (See Page 20 for a full list of endowments the Federation manages.)



COMMUNITY CAMPAIGN GRANTS

For fiscal year 2016, which began July 1, 2015, the Federation Board of Directors awarded 54 grants to community organizations, totaling \$2,152,648. The grants were the final allocations by the Federation.

Historically, the Jewish Federation was the community's main source of financial support for Jewish agencies, including schools and cultural and human services organizations. As these organizations have grown, they have built effective fund-raising capabilities of their own. After carefully reviewing the 2014 Greater Seattle Jewish Community Study, the Federation determined it could deliver greater value by shifting away from grant-making to making deep, targeted investments creating and strengthening Jewish engagement opportunities – creating Jewish Connections for Life.

The fiscal year 2016 grants included:

All Schools Scholarship Funding - \$212,650

Enabling the Jewish Day School of Metropolitan Seattle, Menachem Mendel Seattle Cheder, Northwest Yeshiva High School, Seattle Hebrew Academy, Seattle Jewish Community School and Torah Day School to provide scholarships defraying tuition costs.

American Jewish Joint Distribution Committee - \$30,000

Welfare support for needy elderly Jews in Moldova

American Jewish Joint Distribution Committee - \$50,000

Partnership for Children Program in Moldova

Amit - \$10,000

Programs helping underprivileged Israeli teens excel in matriculation exams.

BBYO Evergreen Region - \$16,000

Seattle BBYO program

Camp Scholarships (Jewish Federation of Greater Seattle) - \$70,000

Need-based Jewish overnight camp scholarships

Camp Scholarships (Jewish Federation of Greater Seattle) - \$38,000

One Happy Camper First-Time Camper Incentive Grants

Chabad at the University of Washington - \$10,000

Young adult programming

Eastern European Counseling Center - \$10,000

Mental health treatment for domestic violence victims

Eastside Torah Center - \$7,000

Shabbat and holiday community lunches

Education Services at the Jewish Federation of Greater Seattle - \$25,000

Community-wide training for early childhood educators

Education Services at the Jewish Federation of Greater Seattle - \$52,000

Professional development services for educators at Seattle Jewish day and supplementary and early childhood schools

Herzl-Ner Tamid Conservative Congregation - \$7,000

Torathon 9 adult learning program

Hillel at University of Washington - \$70,000

Jconnect Seattle, engaging young Jews

in social, educational, recreational and social justice activities, including Friday Shabbat dinners

Hillel at University of Washington - \$40,000

Undergraduate Shabbat and holiday programs

Holocaust Center for Humanity - \$10,000

Year-long Anne Frank exhibit

Holocaust Center for Humanity - \$15,000

Outreach to adult children and grandchildren of local Holocaust survivors

Holocaust Center for Humanity - \$8,000

Yom Hashoah programming

Israel Scholarships (Jewish Federation of Greater Seattle) - \$20,000

Need-based scholarships for teen Israel experiences

Jewish Agency for Israel - \$25,000

Internship opportunities for Puget Sound young adults in Israel

Jewish Agency for Israel - \$15,000

Social change programs in Kiryat Malachi

Jewish Agency for Israel - \$7,500

Jewish camping in the former Soviet Union

Jewish Agency for Israel - \$6,186

Support for families in Kiryat Malachi and Hof Ashkelon affected by the summer 2014 attacks

Jewish Agency for Israel and American Jewish Joint Distribution Committee - \$460,492

Jewish identity and humanitarian assistance programs in Israel and overseas.

Jewish Family Service - \$105,000

Polack Food Bank and Emergency Services

Jewish Family Service - \$95,000

Project DVORA, providing domestic violence victims with tools and support for personal safety and moving forward with their lives

Jewish Family Service - \$73,000

SAJD Supported Living Program

Kiryat Malachi Endowment Fund - \$14,000

Kiryat Malachi Emergency Clinic, providing low-income residents with essential medical care

Kiryat Malachi Endowment Fund - \$20,000

Summer camp program for children in Kiryat Malachi

Kiryat Malachi Endowment Fund - \$20,000

Young adult center in Kiryat Malachi

Kol HaNeshamah - \$7,820

Education programming in West Seattle

Leket Israel - \$25,000

Nutritional support for vulnerable populations in Kiryat Malachi and Hof Ashkelon

Livnot Chai - \$60,000

Education programming for high school-age students

Nerya Center-Kiryat Malachi - \$14,000

Tutoring programs for low-income 8th grade students in Kiryat Malachi

Partnership Region (Jewish Federation of Greater Seattle) - \$25,000

Arts, sports and other cultural programs for Kiryat Malachi and Hof Ashkelon residents

PJ Library (Jewish Federation of Greater Seattle) - \$70,000

Sending Jewish children's books and music to over 2,000 families, and engaging families in Jewish life at Neighborhood Song & Story events

Seattle Hebrew Academy - \$16,000

Training educators of early learning students with disabilities

Seattle-Israel Connections (Jewish Federation of Greater Seattle) - \$40,000

Programming building people-to-people connections between Seattle and Israel

Seattle Jewish Community School - \$20,000

K-5 supplementary educational programming for students with special needs

Seattle NCSY - \$5,000

Jewish Student Union programs

Seattle NCSY - \$5,000

Programming and activities for Jewish teens

SELAH: Israel Crisis Management Center - \$20,000

Direct emergency aid, including grants and other assistance, to Israel immigrants facing life crises

Stroum Jewish Community Center - \$50,000

Community Jewish holiday celebrations

Stroum Jewish Community Center - \$35,000

Cultural arts programming

Stroum Jewish Community Center - \$51,000

Summer camp programs in Seattle and Mercer Island

Temple De Hirsch Sinai - \$8,000

High Holidays programming for unaffiliated young adults

The Friendship Circle of Washington - \$14,000

Summer camp programming

The Friendship Circle of Washington - \$14,000

Friends@Home program of teen volunteers visiting special needs children at home to offer friendship and participate in shared activities

The Friendship Circle of Washington - \$26,000

Sunday Circle program of movement therapy, art therapy, crafts and games for children with special needs

The Kline Galland Center and Affiliates - \$40,000

Chaplaincy program

The Kline Galland Center and Affiliates - \$40,000

Expansion of Palliative Care program

The Tag Foundation for Social Development - \$5,000

Women's programs in Seattle

Washington State Jewish Historical Society - \$5,000

Records archiving

YEDID - \$15,000

Kiryat Malachi Citizens Rights Center, helping Israel immigrants work through government agencies to receive essential services

Special Purpose Funds

Contingency Fund - \$20,000

For urgent requests that cannot be accommodated in normal funding cycle

Emergency Capital Needs Fund - \$1

Loans for Western Washington Jewish agencies and synagogues to finance emergency capital repairs or replacements

Research Fund - \$40,000

2014 Greater Seattle Jewish Community Study (See Page 4)

Taglit-Birthright Israel - \$25,000

Enabling local young adults to go on life-changing Israel trips

Welfare Funeral Fund - \$6,200

Assisting in providing Kosher burials

SPECIAL INITIATIVES FUND

THE SPECIAL INITIATIVES FUND SUPPORTS GRANTS FOR TARGETED
PROJECTS THAT MAKE BIG IMPACTS ON OUR COMMUNITY.

IGNITION GRANTS

Ignition Grants provide up to \$5,000 for new, pilot or one-time projects. Ignition Grants benefit community organizations of all sizes for a variety of projects. In

considering grants, the Federation looks for projects that can demonstrate impact and help create Jewish Connections for Life.

In fiscal year 2015, the Federation awarded \$63,975 Ignition Grants to 17 projects. Grants included:

Hebrew Hoops – Half-day camps combining basketball skills training and Jewish education for Jewish youth.

Hillel at the University of Washington – Passover food truck bringing kosher Passover meals to workplaces throughout the Puget Sound area.

Holocaust Center for Humanity – Documenting testimonies from 10 individuals from the former Soviet Union sharing their family stories for research and study.

Jewish Family Service – Emergency preparedness services for 30 clients in the SAJD Supported Living Program.

Jewish Transcript Media – Production of *Letters to the Editor*, a theatrical performance offering a retrospective of Jewish news in Washington State.

Seattle Hebrew Academy – A Hanukkah concert featuring Jewish rap artist Ari Lesser for day school students throughout the Puget Sound region.

Seattle Jewish Chorale – Production of a CD and digital downloads of traditional and contemporary Jewish music.

Seattle Jewish Community School – Responsive Classroom, a teaching approach integrating social and emotional learning into the school day.

Stroum Center for Jewish Studies at the University of Washington – A fellowship giving 25 to 30 young community members an opportunity to discuss key Jewish issues, starting with the theme, “A Brief History of God in Jewish Sources.”

Stroum Jewish Community Center – Training 15 swim instructors to supervise children with special needs during pool sessions.

Stroum Jewish Community Center – Little Israel program offering weekly Hebrew immersion instruction for students in kindergarten through grade 5.

Stroum Jewish Community Center – “92nd Street Y@the J,” a live-streaming pilot series of lectures, interviews and conversations from the 92nd Street Y in New York City.

Temple De Hirsch Sinai – 4th Shabbat with the Tribe, innovative Shabbat services offered monthly to young adults.

The Friendship Circle of Washington – Cooking Circle for teaching children with special needs the importance of healthy eating, and training in skills necessary for safe cooking from start to finish.

The Kavana Cooperative – Exploring Jewish Adulthood family program series for middle school students and parents, including community service, peer-to-peer learning and family genealogy studies.

The Kavana Cooperative – Six Israel education programs, open to the entire community, including three sessions on “Giants of Zionist Thought” and three on Golda Meir’s autobiography, *My Life*.

Vashon Kavurah – Helping 22 families prepare for B’nai Mitzvot using the “18 Mitzvot” program.

SMALL AGENCY SUSTAINABILITY GRANTS

Small Agency Sustainability grants provide up to \$5,000 in operational support for Jewish organizations with an annual operating budget of \$200,000 or less. In fiscal year 2015, the Federation awarded \$27,100 to seven organizations.

Grants included:

Congregation Beth Hatikvah – A vibrant, welcoming and inclusive community serving the Jewish community on the Kitsap Peninsula.

Congregation Shaarei Tefilah-Lubavitch – A close-knit yet open community serving the observant Jewish population in North Seattle.

Hillel at Western Washington University – Providing opportunities for Jewish college students at any higher education institution in Skagit and Whatcom counties to participate in Jewish life.

Minyan Ohr Chadash – A Modern Orthodox, Zionist minyan where singing and group participation are integral parts of the services.

Seattle Jewish Chorale – An auditioned community choir preserving, celebrating and advancing the cultural heritage of world Jewry.

The Evergreen State College, for the Jewish Student Union – Providing a safe space for Jewish students and allies to explore their relationship with Judaism.

Vashon Havurah – A warm, welcoming home for the spiritual, social and intellectual needs of the Jewish community on Vashon Island.

WOMEN'S ENDOWMENT FUND

The Women's Endowment Fund supports programs that empower and improve the lives of women and girls locally and in Israel.

Grants are funded in two-year cycles. For fiscal years 2015 and 2016, the Federation awarded \$31,500 in grants to seven projects.

Grants included:

Jerusalem Hills Centers – Teen Girls Empowerment Program, each year helping 16 girls overcome hardships of neglect and dysfunctional families.

Jewish Family Service – Project DVORA, helping victims of domestic violence throughout the Puget Sound region.

Ma'se Center – “My Sister,” Tel Aviv “Achva” group, promoting socio-economic mobility of marginalized populations in Israel by providing volunteer opportunities and career development.

NEGBA: Network of Houses of Hope in Israel for Children at Risk – Seminars for mothers and daughters from at-risk families on topics such as personal safety, confidence and communication, and trust building.

New Family Organization: Women's Legal Equality Project – promoting the rights of women who cannot marry in Israel, including immigrants, Reform and Conservative Jews, and single mothers.

Together Beyond Words: From Stage to Change – Using drama to bridge the gap between Jewish and Arab Israeli women.

Turning the Tables – Supporting women exiting the cycle of prostitution and sex trafficking, with vocational training, work experience and social integration.

COMMUNITY PROGRAMS

THE JEWISH FEDERATION OF GREATER SEATTLE OPERATES PROGRAMS THAT PROVIDE BENEFITS TO THE PUGET SOUND JEWISH COMMUNITY.



Education Services

Education Services of the Jewish Federation of Greater Seattle offered a rich array of professional development programs for teachers working in local Jewish day, supplementary and early childhood schools during the 2014-2015 school year.

From conferences bringing together teachers from different schools to hear distinguished speakers, to classes offering deep dives into Hebrew, classroom leadership, technology and other relevant topics, Education Services carried out its commitment to helping teachers reach for higher levels of achievement in Jewish learning.

During the 2014-2015 school year, 251 teachers from 30 schools benefited from Education Services programs. Seven teachers received professional development scholarships, and five day school teachers benefited from one-on-one mentoring.



WOMEN'S PHILANTHROPY

WOMEN'S PHILANTHROPY PROVIDES OPPORTUNITIES FOR WOMEN TO COME TOGETHER FOR ENHANCING AND CELEBRATING JEWISH LIFE IN SEATTLE.

Women's Philanthropy holds special events that celebrate the power of women to make a difference in creating Jewish Connections for Life. The Jewish Federation of Greater Seattle's dedicated volunteer leaders have worked diligently to create networking opportunities and meaningful ways for women to serve with distinction.



Connections

Connections is the Jewish women's event of the year in the Puget Sound region. Connections brings together hundreds of women to learn, lead and build community, to give their time and energy for the benefit of Jewish Puget Sound. Connections 2015 drew nearly 400 women to hear Rabbi Jamie Korngold, the "Adventure Rabbi." Connections 2015 Co-Chairs were Trea Diamant and Judy Schocken.

Lion of Judah

Lions of Judah is an internationally recognized designation for women who make extraordinary philanthropic contributions to the Jewish community. In Jewish Puget Sound, Lions of Judah gather for community service and for learning. In 2015, Lions gathered to hear Zaq Harrison, an educator, give a presentation on his story, "They Are All Gone," about the tragic events at the 1972 Olympics.



2014-15 FEDERATION LEADERSHIP

Board Chair

Celie Brown

Immediate Past Board Chair

Shelley Bensussen

Executive Committee

Carl Bianco, Vice Chair

Zane Brown, Jr., Vice Chair

Stephen Loeb, Vice Chair

David Stiefel, Vice Chair

Dan Lowen, Secretary

Helene Behar, Treasurer/Finance & Administration Chair

Hal Jackson, Center for Jewish Philanthropy Chair

Debra Mailman, Planning & Allocations Chair

Additional Standing Committee Chairs

Lisa Brashem, Women's Philanthropy Chair

Ron Leibsohn, Community Relations Chair

Eric Hasson, Audit Chair

Iantha Sidell, Planned Giving Chair

At-Large Board Members

Jerry Anches

Sarah Boden

Linda Clifton

Andrew Cohen

Susan Edelheit

David Ellenhorn

Don Etsekson

David Isenberg

Aimee Johnson

Jordan Lott

Naomi Newman

Moss Patashnik

Elizabeth Richmond

Phil Roberts

Corey Salka

Diane Sigel-Steinman

Rabbinic Organization Representatives

Rabbi Jill Borodin

Rabbi Moshe Kletenik

Ex-Officio Board Members

Robin Boehler

Merle Cohn z"l

Ray Galante

Eileen Gilman

Frankie Loeb

Gerald Ostroff

Herb Pruzan

Lucy Pruzan

Michele Rosen

Herman Sarkowsky z"l

Michael Spektor

Rob Spitzer

2014-2015 Executive Team

Keith Dvorchik, President & CEO

Nancy B. Greer, Chief Operating Officer

2014-15 SPONSORS

Platinum Level

SEI Investments Company

SEI New ways.
New answers.®

Gold Level

Ben Bridge Jeweler

Ben Bridge
YOUR PERSONAL JEWELER SINCE 1912

Silver Level

AlphaGraphics

alphagraphics
increase your reach

Bronze Level

Celie and Zane Brown
Davis Wright Tremaine
Dennis Goldstein & Associates, PS
Island Crust Cafe
Luminita
POP! Gourmet Foods
Sprague Israel Giles, Inc.



CELIE AND ZANE BROWN

Community Partner Sponsors

Anti-Defamation League
Camp Solomon Schechter
Eastern European Counseling Center
Herzl-Ner Tamid
Hillel
Holocaust Center for Humanity
Jconnect Seattle
The Jewish Day School of Metropolitan Seattle
Jewish Family Service
Livnot Chai
Northwest Yeshiva High School
Seattle Hebrew Academy
Stroum Center for Jewish Studies
Stroum Jewish Community Center
Temple B'Nai Torah
Temple De Hirsch Sinai
URJ Camp Kalsman
Washington State Jewish Historical Society



2014-15 COMMITTEES

PLANNING & ALLOCATION

Debra Mailman, Chair
Helene Behar
Shelley Bensussen
Celie Brown
Susan Edelheit
Ellice Ellenhorn
Naomi Fine
Lorna Isenberg
Hal Jackson
Dan Lowen
Wayne Morse
Moss Patashnik
Jonathan Schwartz
Diane Sigel-Steinman
Keith Dvorchik
Nancy Greer
Noa Guter
Jonathan Feller

Work Group: Helping Our Local Community in Need

Diane Sigel-Steinman, Chair
Naomi Fine, Vice Chair
Arlene Cohen
Erica Coppel
Alison Dvorchik
Joshua Leblang
Rochelle Roseman

Work Group: Strengthening Global Jewry

Wayne Morse, Chair
Lorna Isenberg, Vice Chair
Nance Adler
Melissa Brown
Barbara Goldberg
Liz Kent
Naomi Newman
David Shayne

Work Group: Experiencing Judaism

Ellice Ellenhorn, Chair
Moss Patashnik, Vice Chair
Josh Alhadeff

Helene Behar
Tim Hirshberg
Annie Jacobson
Shimon Shriki

**Work Group: Building
Jewish Community**
Jonathan Schwartz, Vice Chair
Shelley Bensussen
Tamar Boden
Michael Cohen
Ben Pariser

NOMINATING

Shelley Bensussen, Chair
Emily Alhadeff
Celie Brown
Robbie Cape
Deirdre Glynn Levin
Giselle Greisman
Don Loeb
Keith Dvorchik
Nancy Greer

FINANCE & ADMINISTRATION

Helene Behar, Chair
Jerry Anches
Carl Bianco
Robin Boehler
Celie Brown
Greg Eisen
Eric Hasson
Alexa Huggins
Hal Jackson
Ron Leibsohn
Stephen Loeb
Howard Lowen
Debra Mailman
Sonny Putter
David Stiefel
Ron Werth
Keith Dvorchik
Nancy Greer
Jean Callahan

AUDIT COMMITTEE

Eric Hasson, Chair
Helene Behar
Celie Brown
Andrew Cohen
Stephen Loeb
Nolan Newman
David Stiefel
Keith Dvorchik
Nancy Greer
Jean Callahan

PLANNED GIVING COMMITTEE

Iantha Sidell, Chair
Rob Dolin, Vice Chair
Celie Brown
Michele Hasson
Dianne Loeb
Lucy Pruzan
David Stiefel
Rod Waldbaum

BOARD DEVELOPMENT

Celie Brown, Chair
Shelley Bensussen
Susan Edelheit
Dan Lowen
Keith Dvorchik
Nancy Greer

SPECIAL INITIATIVES FUND

Susan Edelheit, Chair
Dean Altaras
Linda Clifton
Margy Crosby
Lisa Fein
Stuart Kaufman
Howie Klein
Julie Smith
Kathleen Spitzer
Keith Dvorchik
Nancy Greer
Noa Guter
Jonathan Feller

COMMUNITY RELATIONS

Ron Leibsohn, Chair
Celie Brown
Linda Clifton
David Ellenhorn
Herb Pruzan
Phil Roberts
Joe Schocken
Michael Spektor
Rob Spitzer
Keith Dvorchik

CENTER FOR JEWISH PHILANTHROPY

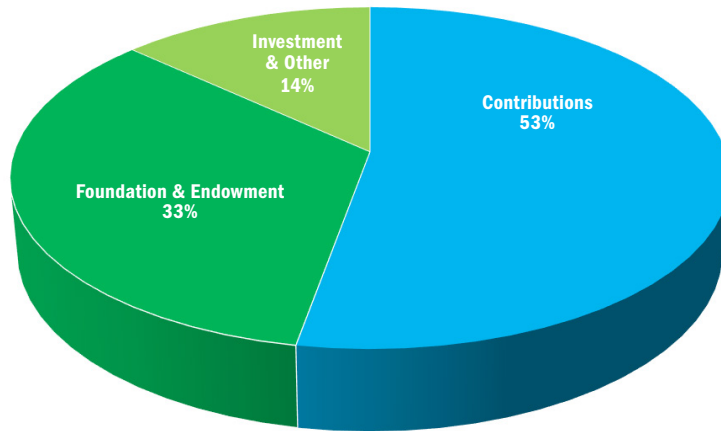
Sarah Boden, Co-Chair
Hal Jackson, Co-Chair
Jerry Anches
Robin Boehler
Celie Brown
David Ellenhorn
Don Etsekson
Ron Leibsohn
Dan Lowen
Stephen Loeb
Jordan Lott
Dan Lowen
Debra Mailman
Corey Salka
Keith Dvorchik
Nancy Greer

COMMUNICATIONS

Sarah Boden, Chair
Helene Behar
Shelley Bensussen
Celie Brown
Julie Ellenhorn
Peter Horvitz
Aimee Johnson
Naomi Newman
Elizabeth Richmond
Keith Dvorchik
Nancy Greer
Jim DiPeso

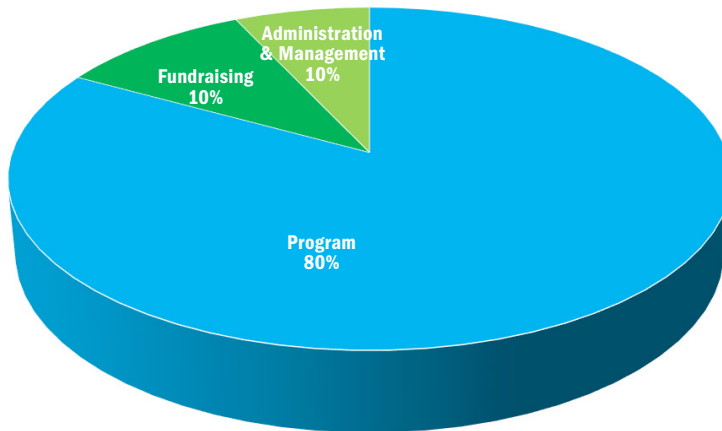
FINANCIAL OVERVIEW

Total Fiscal 2015 Revenues



*Graph does not include \$6,999,421 gain on sale of Federation building.

Total Fiscal 2015 Expenses



ENDOWMENT HONOR ROLL

The Seattle Jewish Community Endowment Fund partners with our donors to achieve their financial goals while giving voice to their highest philanthropic values and priorities. The Fund is managed by the Jewish Federation of Greater Seattle as a service to our community. The Fund matches donors' philanthropic interests to planned giving opportunities, ensuring that their long-term charitable goals are met.

We recognize the following funds that were part of the Seattle Jewish Community Endowment Fund as of June 30, 2015. We call your attention to those funds that were new in Fiscal Year 2015 (listed in **bold**) and those that grew through additional contributions (listed in *italics*).

AGENCY PARTICIPATION FUNDS

Congregation Beth Shalom - Capital
 Congregation Beth Shalom - Endowment
Congregation Beth Shalom - Ernest R. Stiefel Leadership Development Fund
Congregation Beth Shalom - Marcy Migdal Fund
 Congregation Ezra Bessaroth Endowment Fund
Hillel Foundation for Jewish Life at the U.W.
 Jewish Day School - Endowment
 Washington State Jewish Historical Society

CHARITABLE GIFT ANNUITIES

Mark Balter
 Herb Bridge
 Herb and Shirley Bridge
 Henry and Olga Butler
 Madeleine Hagen
 Elaine D. Henley
 Gerald S. and Mary C. Lellouche
 Alice Siegal
 Arthur Siegal

CHARITABLE TRUSTS

Sid Shapiro Charitable
 Remainder Annuity Trust
 Elisa F. Thomases Charitable
 Remainder Unitrust

DONOR ADVISED FUNDS (DAFS)

ABC Pacific DAF
 Adler Family DAF
 Joan and Morrie Alhadeff Memorial Fund
 Rachel and Nissim Altabet Memorial Fund
Richard and Dianne Arensberg DAF
 Barbara and Sandy Bernbaum Family DAF
 Ben Bridge Family DAF
 Jonathan and Bobbe Bridge Family DAF
 Pearl and Bernie Brotman DAF
Robert and Bonnie Cape DAF
Pamela and Michael Chozen Seattle DAF
Yaffa Chudnow DAF
 Orville and Victoria Cohen DAF
 Cohen/Simon Family Fund
 Aaron L. and Edith Dichter DAF
 Dolin and Madsen DAF
 William Donner DAF
 Donner - Perlman DAF
 Henry and Mila Eisenhardt DAF
 Donald and Patricia Esfeld DAF
 Sol and Sadie Esfeld Memorial Fund
 Don and Deanne Etsekson DAF
 Sandy and Henry Friedman DAF
Raymond and Jeannette Galante DAF
 Gendler Family DAF
 Gesher Fund
 Jay Goldberg Memorial Fund

Stanley and Berthe Habib DAF
 Eddie and Marguerite Hasson DAF
 HMB DAF
 Sidney Z. Jaffe Memorial Fund
 JCA DAF
 Mary Kleinberg DAF
 Richard Koch DAF
 Krasik-Geiger Family DAF
Mark Litt Family DAF
 Hal and Inge Marcus DAF
 Jack and Dorothy Muscatel DAF
 Lawrence and Ann Nieder DAF
 Louis and Emma Ostroff Memorial Fund
 Jack Polack Memorial Fund
Dean and Gwenn Polik DAF
 Harvey S. and Judy G. Poll DAF
 Hermine R. Pruzan Memorial Fund
 Lucy and Herb Pruzan DAF
 Reiter Family DAF
 Robert L. Richmond DAF
 Barri Rind DAF
David R. Rind DAF
 Ritt Family DAF
 Devin J. & Rachel M. Rosen Fund
 Harvey Rosen DAF
 Nathan and Judy Ross DAF
 Schwartz-Fisher DAF
 Robin and Sid Shapiro DAF
 Stanley A. and Iris A. Sigel DAF

Richard and Julie Simon
Coppersmith Family Fund
Jan Simon DAF
Jordan Sloan DAF
Joshua Sloan DAF
Michael David Spektor and Wendy Shultz
Spektor Family DAF
Spring Family Fund
Jack, Frieda, and Roosevelt Steinberg DAF
Ron H. Steinberg Memorial Fund
Max and Gussie Stusser Memorial DAF
Sussman Family DAF
David and Karen Tarica DAF
Torah Aura DAF
Louis and Bayla Treiger DAF
Harry and Elsie Weiner DAF
Simon Weinstein DAF
Herbert Wittenberg DAF

LION OF JUDAH ENDOWMENT FUNDS

Becky Benaroya LOJE Fund
Joyce Benezra LOJE Fund
Gail Bereny LOJE Fund
Fannie Feinberg LOJE Fund
Eileen Gilman LOJE
Lillian Kaplan LOJE
Hermine Pruzan LOJE Fund
Paula Rose LOJE Fund

**PERPETUAL ANNUAL CAMPAIGN
ENDOWMENT FUNDS**

Becky and Jack Benaroya PACE Fund
Jack and Eleanor Berg PACE Fund
Robert and Barbara Bridge PACE
Lillian and Victor Calderon PACE Fund
Muriel Bach Diamond PACE Fund
Herman and Zelda Feinberg PACE Fund
John Friedmann PACE Fund
Gerson M. Goldman PACE Fund
William C. Hardman PACE Fund
The Milton and Pauline Hecht PACE
Charles Kaplan PACE Fund
Philip Kaplan PACE Fund

Samuel and Harriet LeBid Memorial PACE Fund
Miriam Morgan PACE Fund
Melville and Sylvia Oseran Pace Fund
Perpetual Annual Campaign Fund (pooled)
Edward Stern Family Fund
Leonard and Helen Tall Memorial PACE Fund

RESTRICTED FUNDS

Alexander Muss Scholarship Fund
Charles D. and Doris L. Alhadeff Memorial
Fund
Ike Alhadeff Memorial Fund
Atlas Scholarship Fund
Berol-Shindell Hillel Scholarship Fund
Birulin Family Scholarship Fund
Bob and Bobbi Bridge Jewish Teachers
Endowment Fund
Danz Philanthropic Fund
Moe and Myra Dinner Memorial Fund
Sara and Max Efron Memorial Fund
Flash Family Camp Scholarship Fund
Morris A. Goldberg Memorial Scholarship Fund
Ari Grashin "It's OK" Memorial Fund
Bertha and Samuel Green Memorial Fund
Merle P. Griff and Nadine Griff Mack Memorial
Fund
Bill Halpern SAEJ Scholarship Fund
Holocaust Memorial Fund
Kaplan Community Service Award Fund
Charles and Lillian Kaplan Scholarship Fund
Stephen A. Kreynes Memorial Fund
NCJW Julie Feuerberg Memorial Fund
NCJW Seattle Section Joyce and Raymond
Benezra Scholarship Fund
PJ Library Seattle Endowment Fund
Meta Rosenbaum Memorial Fund
Samis Endowment Challenge Fund for JDS
Schaerf Memorial Fund
Seattle Hebrew Academy Endowment
Challenge Fund

Seattle Hebrew Academy Endowment Fund
Edna C. Simon Memorial Fund
Spitzer Young Leadership Award Fund
Althea Stroum Woman of Distinction Award
Tribute Fund
Pam Waechter Memorial Fund
Washington State Holocaust Educational
Endowment Fund
Women's Endowment Fund of the Seattle
Jewish Community
Anna and Leo Zafran
Memorial Fund for UJA Israel

SUPPORTING FOUNDATIONS

The David and Cathy Habib Foundation
Jewish Day School Supporting Foundation
Samuel Israel Foundation

UNRESTRICTED FUNDS

Emergency Capital Needs Fund
Federation Endowment Fund
Milk and Honey Endowment Fund
Special Initiatives Fund

BOLD = NEW FUND IN FY2015
ITALICS = RECEIVED A CONTRIBUTION IN FY2015

