



The Jewish Federation
OF GREATER SEATTLE

2014

GREATER SEATTLE JEWISH COMMUNITY STUDY



TECHNICAL APPENDICES

Cohen Center
for Modern Jewish Studies

Steinhardt
Social Research
Institute

RESEARCH CONDUCTED BY:
Matthew Boxer, Janet Krasner Aronson
Matthew A. Brown, Leonard Saxe
Cohen Center for Modern Jewish Studies
Steinhardt Social Research Institute
BRANDEIS UNIVERSITY

Table of Contents

Appendix A: Methodology	A1
Overview	A1
Sampling Frame	A2
Sample Design.....	A4
Survey Instrument and Data Collection	A5
Field Procedures	A6
Developing the Population Estimate through Data Synthesis.....	A8
Summary of Data.....	A8
Modeling.....	A9
Seattle Jewish Population Estimates.....	A10
Weighting	A11
Overview of weighting procedures used	A11
Design and base weights.....	A13
Poststratification	A14
Estimating the JNRs	A14
Poststratifying households to JBR+JNR.....	A15
Developing individual weights	A15
Poststratifying to known number of students in day school	A15
Poststratifying the full sample	A16
Calculating final household weights.....	A16
Analysis.....	A16
Bias and Limitations.....	A16
Endnotes	A17

Appendix B: Survey Instrument and Codebook	B1
Welcome Page.....	B1
Screener.....	B2
Demographics.....	B9
Other Adults Living in the Household	B16
Children Living in the Household.....	B48
Adult Children Living in the Household.....	B63
Children Living Outside the Household.....	B81
Residency Information	B82
Jewish Education, Households with One Child Not Yet in Kindergarten	B85
Jewish Education, Households with Multiple Children Not Yet in Kindergarten	B87
Jewish Education, Households with One Child in Kindergarten or Older.....	B89
Jewish Education, Households with Multiple Children in Kindergarten or Older	B96
Young Adult Respondents	B103
Religious Life	B110
Engagement with Israel and Feelings of Peoplehood	B115
Jewish Programming	B120
Volunteering and Philanthropy	B128
Health	B133
Labor Force Participation and Financial Well Being.....	B136
Concluding Thoughts	B142
Appendix C: Survey Documentation	C1
Pre-Notification Letter	C1
Briefing Materials for Interviewers.....	C3
Jewish Holidays Cheat Sheet.....	C4

Hebrew/Yiddish Words Cheat Sheet	C5
Branches of Judaism	C7
General Jewish Phrases Cheat Sheet	C8
Puget Sound Jewish Community Words Cheat Sheet	C9
List of Puget Sound Jewish Congregations	C10
Additional Resources	C12
Appendix D: Maps	D1
Appendix E: Neighborhoods.....	E1

List of Tables and Figures

Table A1. Composition of strata.....	A3
Table A2. Sample size by strata.....	A5
Table A3. Response rate by strata for primary sample (AAPOR RR2)	A7
Table A4: 2007 to 2013 Greater Seattle population model: Adult Jewish population by religion estimates based to Census Population Estimates Program 2013.....	A11
Figure D1. Dot density map of Jewish households in Greater Seattle area (1 dot = 25 households).....	D2
Figure D2. Dot density map of Jewish households, with focus on City of Seattle (1 dot = 25 households).....	D3
Figure D3. Dot density map of Jewish households, with focus on Bellevue, Redmond, and Mercer Island (1 dot = 25 households).....	D4
Figure D4. Dot density map of Jewish households with children in Greater Seattle area (1 dot = 10 households).....	D5
Figure D5. Dot density map of Jewish households with children, with focus on City of Seattle (1 dot = 10 households)	D6
Figure D6. Dot density map of Jewish households with children, with focus on Bellevue, Redmond, and Mercer Island (1 dot = 10 households)	D7
Figure D7. Dot density map of Jewish households with senior citizens, Greater Seattle area (1 dot = 10 households)	D8
Figure D8. Dot density map of Jewish households with senior citizens, with focus on City of Seattle (1 dot = 10 households).....	D9
Figure D9. Dot density map of Jewish households with senior citizens, with focus on Bellevue, Redmond, and Mercer Island (1 dot = 10 households)	D10
Table E1. Section assignment of neighborhoods, city of Seattle.....	E1

Appendix A: Methodology

Overview

CMJS has developed innovative methods to estimate the size and characteristics of the Greater Seattle Jewish community. As survey techniques have become more refined, the barriers to reaching respondents have become increasingly difficult to overcome. Researchers typically experience limitations in reaching respondents due to the prevalence of cell phones and caller ID/blocking. Low-incidence populations are particularly hard to reach using the traditional method of random digit dialing (RDD) because the likelihood of reaching someone in the target population depends upon the size of that group relative to the population as a whole. To address these barriers, CMJS has utilized a research design that incorporates two innovations:

- Data from an extended sample of email-only respondents
- Estimates of the number of adult Jews by religion (JBR) in the greater Seattle area as calculated by the Steinhardt Social Research Institute (SSRI) based on a synthesis of hundreds of RDD-based surveys

The research design for the Greater Seattle Jewish Study utilizes random sampling from an identified frame, or list, of the known population. Forty organizational membership and mailing lists were collected and combined in order to create a sampling frame from which a primary random sample of households was drawn. Because this primary sample was a random selection from the overall frame, it is assumed to be representative of the entire frame. For that reason, data collected from the random sample was used to estimate overall population characteristics.

To supplement the primary random sample, all remaining households who had an email address were included in a supplementary email-only sample. Information from these households increased the size of populations of interest and allowed for more detailed analysis of the characteristics of the community.

In order to extrapolate the results from this sample to the population as a whole, we adjusted the results to match estimates of the number of adult Jews by religion (JBR) in the Greater Seattle area as calculated by SSRI. Through a statistical process of data synthesis, SSRI combined the results of hundreds of RDD-based surveys conducted by a variety of organizations in order to produce a result that is more reliable than one that can be obtained from any single survey.

The methodology is described as follows:

1. Sampling frame
2. Sample design
3. Survey instrument and data collection
4. Field procedures
5. Developing the population estimate through data synthesis
6. Weighting
7. Analysis
8. Bias and Limitations

Sampling Frame

The 2014 Greater Seattle Jewish Community Study implemented a dual-mode Internet and telephone survey to reach year-round and seasonal residents of the Greater Seattle area. In the absence of an area probability or RDD frame, we began to build a sampling frame from the combined mailing lists of the Jewish Federation of Greater Seattle and other Jewish organizations in the area. The names of the organizations that provided lists are shown in Table A1. We requested lists from over 130 organizations and received lists from 46, of which 40 provided usable data.¹

Table A1. Composition of strata

Priority	Type	Organization
1	Day school	Jewish Day School of Metropolitan Seattle
		Northwest Yeshiva High School
2	Youth	Camp Solomon Schechter
		The Livnot Project
		PJ Library
		Seattle BBYO
		NCSY
3	Young adult	University of Washington Hillel
		Stroum Jewish Studies Program Advisory Board
		AEPi Seattle Members
		AEPi Winter Roster 2014
		NCSY Alumni
4	Synagogue	Sephardic Bikur Holim Congregation
		Bet Aleph
		Beth Shalom
		Eitz Or Directory
		Emanuel Congregation
		Kadima Reconstructionist Community
		Temple Beth Or
		Temple De Hirsch Sinai
5	Miscellaneous	Seattle Hadassah
		Seattle J-Street
		Washington State Jewish Historical Society
		SJCS
		Washington State Holocaust Education Resource Center
		Jewish Federation
		Samis Foundation
		Stroum Jewish Community Center
		JT News Subscribers
		Microsoft or Israel List (opt-in)
		Whidbey Island
		Jewish Family Services
		Secular Jewish Circle of Puget Sound
Seattle Jewish Film Festival		
6	Ethnic names	InfoUSA data purchase

In order to find any Jewish-connected households not already known to the organized Jewish community, a list of possible Jewish households was purchased from a commercial data broker, Infogroup, and was added to the sample. This list consisted of over 15,500 Puget Sound households that were identified as likely to include someone who was Hebrew-speaking or Jewish by ethnicity, ethnic group, or religion. These households that appeared on this list and no organizational list – over 12,000 households – represented the “unaffiliated” Jewish community.

The organizational and purchased lists were combined, cleaned, and deduplicated to ensure that no unique household appeared on the list more than once. Households without any mailing address were removed from the sampling frame because they could not be fully identified. Households with mailing addresses outside the five-county Greater Seattle area were retained in the frame in case they were secondary addresses for households that lived in the Greater Seattle area for part of the year. The combined sampling frame consisted of nearly 56,000 households.

Sample Design

The households in the sampling frame were divided into six groupings, called strata, based on expected characteristics of the household inferred from the household’s appearance on organizational lists. The composition of the six strata is shown in Table A1. Households that appeared on multiple lists were placed in the lowest-number strata for which they were eligible; for example, a household appearing on a day school list (stratum 1), a synagogue list (stratum 3), and the ethnic Jewish names list (stratum 6) would be assigned to stratum 1.

To achieve geographic diversity in the sample, the households were divided based on the ZIP code of their mailing address. Residents of King County were separated from residents of the other four counties as well as those from outside the area. After subdividing the strata by geography, 12 strata were created.

A primary sample of 6,670 potential respondents was randomly selected from the twelve different strata (Table A2). The sampling rate of each stratum was designed to oversample likely Jewish households and likely households with children in order to maximize the representation of those groups within the final sample.

Following selection of the sample, an email-only supplement was identified. This sample included all households that were not selected into the primary sample and had at least one email address included in one of the lists.

The combination of the primary sample and the email-only supplement is referred to as the “full sample.”

Table A2. Sample size by strata

Strata	Frame size	Primary sample	Email-only supplement
King 1	2,600	445	1,496
King 2	3,289	504	2,139
King 3	2,400	357	1,666
King 4	806	278	378
King 5	24,478	1,329	12,079
King 6	6,697	1,399	1,721
Other 1	132	65	31
Other 2	430	214	130
Other 3	269	135	78
Other 4	128	65	35
Other 5	9,019	779	3,111
Other 6	5,384	1,100	1,468
Total	55,632	6,670	24,332

Survey Instrument and Data Collection

The survey instrument was designed in collaboration with a special advisory committee of the Jewish Federation of Greater Seattle. The questions were crafted to minimize potential bias and any burden on respondents. Where possible, questions, language, and definitions were adopted from previously published Jewish community survey questionnaires, allowing for greater confidence in their reliability.

Two modes of data collection were utilized: online and telephone. The online and telephone instruments were identical – when a survey was completed over the phone, the telephone interviewer would fill out the online version.

The questionnaire was divided into two parts, a screener and the survey itself. The screener section was asked of all respondents to determine eligibility. Any household in the sample was considered eligible if it contained at least one adult aged 18 or older who lived in Greater Seattle for at least part of the year and considered him- or herself to be Jewish. A total of 5,211 households completed the screener and of those, 3,153 were screened into the survey. Ninety-five respondents were initially screened into the survey but after inspection of responses were determined to include no Jewish adults or that the adults were Messianic Jews and therefore ineligible for the survey.² The final sample consisted of 3,058 households.

Qualifying households proceeded to the main survey, which included sections on basic sociodemographic information, engagement in Jewish life, and perceptions of various aspects of

Jewish communal life in Greater Seattle. In order to minimize the burden on respondents, a series of complex skip patterns (“branching”) were created to ensure that respondents were only asked questions that pertained to their specific life situation or experience. Thus, for example, a household that lives in Greater Seattle with no children would not be asked questions about choice of schools, camping, etc. The online survey took between 20-25 minutes to complete. Respondents completing the survey over the telephone usually completed it in about 30 minutes. However, the amount of time required to complete the survey varied for all respondents, regardless of mode of completion, depending on household composition and the degree of detail respondents were willing to offer for open-ended questions.

The survey instrument is presented in the form of a codebook in Appendix B.

Field Procedures

Prenotification letters were mailed to the primary sample of 6,670 households on May 5, 2014. These letters explained the purpose of the survey and provided each household with a unique link to complete the survey independently online. Households for which one or more e-mail addresses were available also received these letters electronically on May 9, 2014. A sample of the prenotification letter is shown in Appendix C.

After one week, households that had not completed the survey were contacted by telephone. The primary goal of telephone contact was to administer the survey over the phone if the respondent was unable or unwilling to complete the survey online, or if the respondent simply preferred to complete the survey over the phone. If the respondent was unwilling to complete the survey over the phone at the time of the call, he or she was asked for a better time to be called again or for an e-mail address to re-send the link to the survey online. Calling began on May 15, 2014, starting with the households for which phone numbers were available. Research assistants searched for additional contact information and added phone numbers to the calling list as they were identified.

Calls were conducted by trained staff at the Survey Research Division of the Social Development Research Group at the University of Washington. Callers were trained by the SRD in the techniques of telephone interviewing and were trained by a member of the CMJS staff in the specifics of this survey. Calling concluded on July 27, 2014. Callers made up to five attempts to reach all households on the primary sample who did not complete the survey online in response to email requests or who did not have email addresses. Callers offered to conduct survey interviews over the telephone or, if requested, to send the household members another unique link to complete the survey online at their convenience. Four additional email reminders were sent for all non-completed surveys on June 2, 11, and 23, as well as July 9, 2014.

Households were contacted repeatedly at different days and times to determine whether available contact information was correct. Households whose available contact information was confirmed to be outdated and those for whom the status was uncertain were searched in online public records databases to find updated information.

The supplementary sample was conducted as an email-only survey that was not accompanied by prenotification letters or phone calls. Email invitations were sent to the 24,332 households in the email supplement on May 29, 2014 with two follow-up reminders. The survey instrument for the email sample was identical to the one used for the primary sample.

Data collection ended on August 26, 2014. In the primary sample, 2,726 households completed the screener; of those, 1,182 were screened into the full survey. The overall response rate was 41% for the primary sample (AAPOR RR2). For the combined primary plus supplemental sample, 5,211 households completed the screener, and of those, 3,156 completed the survey, yielding an overall response rate of 19% (AAPOR RR2).

After data collection concluded, the survey was opened up to the community for anyone to respond if they had not been selected into the original sample. An additional 586 responses were received in the open-access survey. Since these responses could not be weighted and adjusted with the other data, only qualitative data from these surveys have been incorporated impressionistically into this report.

Table A3. Response rate by strata for primary sample (AAPOR RR2)

Strata	Primary sample size	Complete, screened in	Complete, screened out	Response rate
King 1	445	190	34	50%
King 2	504	200	32	46%
King 3	357	152	48	56%
King 4	278	136	8	52%
King 5	1,329	191	287	36%
King 6	1,399	87	461	39%
Other 1	65	14	16	46%
Other 2	214	55	27	38%
Other 3	135	29	23	39%
Other 4	65	36	9	69%
Other 5	779	59	177	30%
Other 6	1,100	33	422	41%
Total	6,670	1,182	1,544	41%

Developing the Population Estimate through Data Synthesis

Since 2005, the Steinhardt Social Research Institute has identified and collected hundreds of data sources, primarily population surveys, that could be used to develop estimates of the Jewish population. These data are used to provide an independent, external reference on the basic demographic profile of the population, including national- and state-level population counts and distributions by age and education. This population profile serves as a point of reference for the community as a whole and for those who conduct targeted surveys of the population and have no frame of reference for evaluating the representativeness of their sample survey. Details of the methods are reported elsewhere.³

The data synthesis method demonstrates how an auxiliary data source can be constructed to provide independent, census-like estimates of the size and characteristics of the adult Jewish by religion (JBR) population in the U.S. at the county level.⁴ These county-level estimates of the adult JBR population may then be used to generate new post-stratification weights. These new post-stratification weights are then applied to the targeted study of the Greater Seattle Jewish population.

It is important to note that a significant part of this presentation is predicated on the understanding that estimates developed through the SSRI data synthesis approach use hundreds of representative samples of adults in the target area. In comparison, targeted studies, including the Greater Seattle Jewish community study, employ a standard approach among survey research generally. In the latter example, estimates observed in a single survey presume to represent the true population based on a hypothetical—that if the survey were repeated, 95 out of 100 times the survey would yield an estimate within the 95% confidence interval observed in the survey. However, these repeated surveys are never actually done. Rather than rely on the hypothetical, the SSRI data synthesis approach directly estimates what the data look like across actually observed repeated independent samples. The approach is very different than simply pooling or aggregating multiple surveys.⁵ One important distinction is that variation in survey level characteristics can be modeled and controlled for across samples.

Summary of Data

The full sample of surveys in the SSRI database currently spans the years 2000 to 2013, with an additional sample of surveys from 1988 to 1992, for a total of 638 independent samples and a total combined sample size of 883,143 respondents, of whom 20,090 identify as Jewish by religion. The present report is based on the most recent data subset to the Pacific census region, from the years 2007 to 2013.⁶ This subset consists of 197 samples with a total of 29,009 respondents, and 652 Jewish respondents.

Samples include those conducted as part of a series, such as the General Social Survey (GSS), a National Science Foundation study which has been conducted biennially since 2000,⁷ the American National Election Studies, and the survey of Religion and Public Life conducted annually by the Pew Forum on Religion and Public Life. In addition, the sample includes surveys conducted regularly by major news organizations (ABC, CBS, NBC), and a number of

independent studies, such as the Baylor Religion Survey,⁸ and the Panel Study on Religion & Ethnicity.⁹ Where a single survey may have included multiple sampling methods or frames (e.g., landline versus cellphone), each is treated as a separate independent sample, with unique identifiers to indicate series membership.¹⁰ For surveys that included over-samples, only the representative portion of the samples were included in the analyses unless the over-samples were of groups estimated directly in the population models – for example, age or race – in which case the over-sample contributed only to estimation of that particular group.

A majority of the surveys (80%) were standard RDD telephone surveys. Nineteen percent were cell phone surveys and 1% were in-person interviews, mail or other (e.g., WebTV/PC). Landline surveys account for 75% of the cases, and cell phone surveys account for 21% of the cases. Cell phone surveys are typically included as an additional independent sample collected along with a landline sample. This is done because it improves estimation of particular demographic groups that tend to be under-represented in landline samples, such as younger and less affluent groups.¹¹ Given the different methods of selection for landline and cell-phone surveys, we treated each as separate independent samples in the analyses.

All of the surveys provide data on those who identify as Jewish by religion (JBR), which is the largest proportion of the Jewish population and therefore serves as the baseline group for generating population estimates. A smaller number of surveys include assessment of religious upbringing or parents' religious/ethnic identification, or non-religious Jewish identification (for instance, “Do you consider yourself Jewish?”) in addition to current religious affiliation.¹² Often the religious identification question is asked as “What is your religion? Is it Protestant, Roman Catholic, Jewish, something else, or no religion?” Nearly all include Jewish as one of the discrete options. An increasing number of surveys provide no discrete options and ask simply, “What is your religion, if any?” and record all self-generated responses to the question. Question wording is recorded in order to examine whether there are differences in Jewish population estimates across the surveys. Overall, 10% of surveys asked an open-ended religious identification question while 90% asked closed ended questions. Most of the surveys (84%) specifically included a “no religion” option (none, non-religious, atheist, or agnostic). Recent research has suggested that the inclusion of none as a specific option increases the proportion of those who identify as “no religion.”¹³ Given that a substantial proportion (up to 20%) of the Jewish population might identify as no religion when asked about religion, this aspect of question wording was also recorded to see if it is also associated with lower estimates of Jewish identification by religion, and if higher proportions identifying as “no religion” is associated with lower estimated proportions of Jewish identification overall.

Modeling

The full post-stratification model specification incorporated estimates from the initial run to specify proposal distributions. These included fixed effects for demographic variables and random effects for survey and state. Covariates in the model include basic demographic variables (age, race, and education). These mirror the categories used in the national data synthesis model. Race was represented by four categories; age as four; education as two. Geographic variables were also included to account for variability in Jewish population density at the Public Use

Microdata Area (PUMA) level. In addition, interaction terms were included for education with age.

Seattle Jewish Population Estimates

Results from the model provide overall population estimates as well as estimates of the distribution of Jews by demographic groupings (age, race, county, etc.). The latter is critical for understanding the characteristics of the population, for evaluating external data, and for providing the basis of weighting for targeted local studies.

The overall estimate of the Greater Seattle adult population who identify as Jewish by religion is 1% (95% CI: .5%-1.7%), corresponding to 32,600 adults (95% CI: 17,600 to 53,300; See Table A4). Distributions varied by age, education, race, and county. For example the proportion of JBR adults who are college educated varies from 44% in Pierce County to 69% in King County. The age distribution is likewise varied by county, from just 15% of JBR adults in King County age 65 or older to 28% of JBR adults 65 or older in Island County group.¹⁴

Table A4: 2007 to 2013 Greater Seattle population model: Adult Jewish population by religion estimates based to Census Population Estimates Program 2013

	Seattle Adults		Percentage of Seattle Adults (CI)	Jewish Adults		
	Populatio n	Pct		Populatio n	Lower Bound	Upper Bound
Total All Groups	3,130,027		1.04 (0.5,1.7)	32,600	17,600	53,300
Age						
18-29 years	641,308	20.5	0.8 (0.4,1.4)	5,400	2,800	9,200
30-44 years	881,909	28.2	1.0 (0.5, 1.6)	8,700	4,800	14,100
45-64 years	1,093,701	34.9	1.2 (0.6,2.0)	13,200	7,100	21,900
65+ years	513,109	16.4	1.0 (0.5,1.7)	5,300	2,800	8,800
Education						
Non-College	2,074,680	66.3	0.5 (0.3,1.0)	12,300	6,000	21,600
College Grad	1,055,347	33.7	1.9 (1.1,3.1)	20,300	11,500	32,600
Race						
Non-Hisp. White	2,232,344	71.3	1.4 (0.8,2.3)	31,100	16,800	51,000
Non-Hisp. Black	180,023	5.8	0.1 (0.1,0.2)	200	100	400
Hispanic	239,342	7.6	0.1 (0,0.2)	300	100	500
Non-Hisp. Other	478,317	15.3	0.2 (0.1,0.4)	1,000	500	1,800
County						
King	1,589,609	50.8	1.4 (0.9,2.0)	22,100	14,200	31,200
Pierce	612,179	19.6	0.4 (0.1,0.9)	2,400	700	5,500
Snohomish	564,216	18.0	0.9 (0.4,1.7)	5,000	2,000	9,700
Kitsap	197,134	6.3	1.2 (0.3,2.5)	2,300	600	5,000
Island and neighboring counties	166,889	5.3	0.4 (0.1,1.2)	700	130	2,000

Notes: a) Source: ACS 2008-2012, adjusted to PEP 2013.

Weighting

Overview of weighting procedures used

The purpose of developing survey weights for the sample is to adjust the survey data so that they will represent the population from which it was drawn. This is done in two ways: base weights and poststratification weights.

For base weights, the data are adjusted to match the sampling frame by calculating the strata-specific probabilities of selection into the sample and rates of response. By adjusting weights

upwards for respondents from strata in which households were less likely to be selected or to respond, and adjusting weights downward for respondents from strata in which households were more likely to be selected or to respond, the resulting weights adjust the data to match the frame from which it was drawn.

Poststratification, the second phase of weighting, adjusts the data to match known population parameters. In this case, the known parameters that were utilized were the data synthesis estimates of the JBR adult population and their age distribution, as described in the previous section, and the number of children currently enrolled in Jewish day schools. After applying the base weights, the sample is adjusted again to match these parameters.

Because the primary sample was selected randomly from the sample frame, it was treated differently from the full sample, which was not truly random. The primary sample was weighted as described above with the calculation of base weights and poststratification weights. This sample was used to estimate the size of the JNR population as well as the distribution of Jewish denominational affiliation. The full sample was then weighted separately. After applying base weights, poststratification weights were calculated to adjust the full sample to the JBR and age estimates from data synthesis, the number of children in day school, as well as the JNR estimate and denominational affiliation calculated from the primary sample.

Survey respondents provided demographic and religion information for all adults and children in their household. Although base weights applied to the respondents, poststratification weights needed to be calculated for individual adults. Accordingly, after applying base weights, the dataset was converted to an individual-level dataset with one record for each adult (rather than one record per household). The individual adult weights were poststratified to match population parameters of JBR, JNR or not Jewish; age; denominational affiliation; and children in day school. After poststratification, the individual weights were recombined into an adjusted household weight.

At the end of the process, a household-level file was created with one record per household. In this file, each record has up to four weights:

- 1) hhwt: the weight of the household for the primary sample
- 2) hhwtfull: the weight of the household for the full sample
- 3) respwt: the respondent's individual weight for the primary sample
- 4) respwtfull: the respondent's individual weight for the full sample

For the individual-level file, there is one record for each adult in each household. This record has two weights in addition to those listed for the household file:

- 1) indwt: the weight of each individual adult for the primary sample (same as respwt for respondents; for adults who are not respondents, respwt=0)
- 2) indwtfull: the weight of each individual adult for the full sample (same as respwtfull for respondents; for adults who are not respondents, respwtfull=0)

In summary, weighting the sample was conducted in five stages. Each stage is described below.

1. Base weights were calculated on the primary and full (primary plus email supplement) samples based on probability of selection and response.
2. For the primary sample only, household weights were poststratified to match the JBR estimate derived through meta-analysis and the JNR estimate calculated from the sample. The total number of households was estimated.
3. The dataset was converted from a household to an individual file so that separate weights could be calculated for each adult. Individual weights for the primary sample were poststratified to match JBR, JNR, age, and number of children in day school. Estimates of adult Jewish denominations were generated from the primary sample.
4. Individual weights for the full sample were poststratified to match JBR, JNR, age, number of children in day school, and denomination.
5. Adjusted household weights for the primary and full sample were calculated as the mean of the individual weights for all adults in the household. This final set of household weights was poststratified to the total number of households.

Design and base weights

Base weights were calculated separately for the primary sample and the supplemental sample. Base weights are calculated as the product of the design weight (inverse of the probability of selection into the sample) and the nonresponse weight (inverse of the probability of responding after being selected into the sample).

For the primary sample, data were weighted separately for each stratum by the probability of selection into the sample (design weights) and nonresponse. To calculate the design weight, the preliminary frame size was adjusted to account for the presumed ineligibility of a proportion of the households in the sample frame. Ineligible households identified during the data collection period of the survey are those households that are found to be duplicates, deceased, or infirm. The adjusted frame size for each stratum was calculated as:

$$\text{Adjusted frame size} = \text{Frame size} \times (\text{Number eligible households} \div \text{Number selected households})$$

The design weight for each stratum was calculated as:

$$\text{Design weight} = \text{Adjusted frame size} \div \text{Number eligible households}$$

Respondents were those who partially or fully completed the survey. Partial surveys were those in which the screening data were completed. The nonresponse weight for each stratum was calculated as:

$$\text{Nonresponse weight} = \text{Number eligible households} \div \text{Number respondent households}$$

The base weight is calculated by multiplying the design weight by the nonresponse weight:

$$\text{Base weight} = \text{Design weight} \times \text{Nonresponse weight}$$

To calculate weights for the supplemental sample, it was necessary to account for the fact that the difference between households with email addresses and those without email addresses was non-random. This difference was dependent upon the content of the data that came in from the organizational lists. To address this, all households from the primary random sample that had no email addresses were re-assigned to a non-email primary sample and design weights were calculated following the procedure described above but only for the non-email portion of the sample. Next, all households from the primary random sample that had any email address were combined with the supplementary email sample. Design weights were calculated for this combined email sample following the procedure described above.

This process yielded a base weight for each completed response in the primary sample and a second base weight for each respondent in the primary or supplementary sample.

Poststratification

In order to adjust the sample to account for the known population of Jews in the Greater Seattle area, the process of poststratification was used. The estimate of adult Jews by religion (JBR) was calculated through the SSRI data synthesis as 32,600. (Note that this is the best estimate, but that the range of the actual is estimate is 17,600 to 53,300.)

In order to adjust to the number of JBR adults, the survey data were reviewed based on responses to religion questions for each adult in the household. Each adult received a preliminary designation of Jewish by religion (JBR), Jewish not be religion (JNR), or not Jewish. To develop household weights, a count of the number of adults of each type in each household was calculated. Further, households were classified according to their Jewish composition; JBR households had a least one JBR adult and JNR households had at least one JNR adult but no JBR adults. All households with no JBR or JNR adults were classified as non-Jewish and reclassified as screened out of the sample.

Estimating the JNRs

The next step in estimating the size of the adult Jewish population was to estimate the number of adult JNRs. It was assumed that the majority of JNRs would be part of the unaffiliated Jewish population, which was represented by stratum 6 of our frame. Using the base weight for the primary random sample, we calculated that there were 940 JBRs and 496 JNRs in strata 6 only. The ratio of these numbers was calculated (1.9) in order to estimate the size of the JNR population. Applying this ratio to the estimate of 32,600 JBR adults yielded an estimate of 17,200. Thus, the preliminary Jewish adult population was estimated at

	32,600	JBR
+	17,200	JNR
	49,900	Jewish adults ¹⁵

Poststratifying households to JBR+JNR

In order to adjust households to match the total number of Jewish adults, the weights of the JBR households were adjusted to match the JBR total using Stata's `survwgt` command. Next, the number of JNRs who resided in JBR households was calculated. This number was subtracted from the expected number of JNRs. Finally, the weights of JNR households were adjusted to account for the remaining JNRs.

The result of this process yielded preliminary poststratification weights on the household level that adjusted the sample to match the expected JBR and JNR counts. Using these weights, the total number of households was estimated.

The process was repeated for the full sample (primary plus email supplement). The full sample was adjusted to match the same JBR and JNR numbers that were calculated from the primary sample.

Developing individual weights

The second stage of the poststratification was conducted on an individual rather than a household level.

The file was converted to an individual-level file with one record created for each adult in the household. The weights of the individual records initially were set at the weights of the household record, resulting in a total weight that added up to the number of individuals rather than the number of households.

The individual records were poststratified to match the JBR and JNR counts. The ages of the JBR adults were adjusted to match the JBR age estimates from meta-analysis. The ages of the JNR and non-Jewish adults were adjusted to match age data from the American Community Survey (ACS) for the five-county area white-only population.¹⁶

After postestimation of the primary random sample, the proportion of Jewish adults identifying with each Jewish denomination was estimated.

Poststratifying to known number of students in day school

The Seattle Jewish community provided an estimate of 428 children enrolled in Jewish day schools. To use this estimate for individual adult weights, we estimated the number of households that this represented and the number of adults in those households.

$$\text{DS students total} = 428$$

For households that had any children in day school:

$$\text{Mean (weighted) DS students per household} = 1.7$$

$$\text{Mean (weighted) adults per DS household} = 2.1$$

The following formula was used to estimate the number of adults in day school households:

$$\text{DS adults} = (\text{DS students total} \div \text{mean DS students per household}) \times \text{mean adults per DS household}$$

From this calculation we estimated that the 428 students in day school live in households in which 531 adults also live.

The last stage of the poststratification of the primary sample was to adjust the number of adults in households in which there was at least one day school student to match the estimate of adults in day school households, 531.

Poststratifying the full sample

Using a procedure similar to the primary sample, the weights for the individual adult records in the full sample were poststratified to match the counts of JBR, JNR, age, denomination, and day school household.

Calculating final household weights

Final household weights were calculated as the mean of the individual weights for all of the adults in the household. To correct the total weights to match the number of households, household weights were poststratified again to match the number of households calculated prior to poststratification.

Analysis

Analyses were done of households as well as individual Jewish adults and Jewish children who were specifically identified by respondents as being Jewish. All analyses were completed using statistical software Stata, version 13. Analysis of demographic data was based only on the primary random sample with appropriate weights applied. All analyses of attitudinal and behavioral data, as well as all subgroup analysis, were conducted using the full sample with appropriate weights applied. Data about the household in general was calculated using household weights and data about individual adults or respondents only was calculated using individual weights.

Bias and Limitations

Every effort to create a representative sample was made in order to prevent bias or, where bias was unavoidable, to identify and reduce it. Nevertheless, some groups are particularly likely to be underrepresented in the sample. Most significant among these are unaffiliated Jews (including new residents and intermarried families) and young adult Jews. Young adult Jews are also likely

undercounted for other reasons. Young adults in general are notoriously difficult to reach for telephone surveys, in part due to the increasing rate of cell phone only households and in part because they tend to move more frequently than older adults; both conditions render young adults harder to track.

Newcomers who are not known to the community are very likely undercounted, though they may have appeared on the ethnic names list. Interfaith families may also be underrepresented to the extent that they are unaffiliated and reside in households with directory listings that do not fit the selected ethnic name parameters.

¹ These are all the lists that were secured by the time the sample had to be prepared. Although attempts were made to secure additional lists, they were not successful. It is hoped that the diversity of the lists minimized the extent to which members of organizations whose lists were not provided for the study were excluded from the sample. Lists were not used if they did not include sufficient data for identifying and deduplicating households.

² Messianic Jews claim Jewish identity, but their claim is typically rejected by the vast majority of the Jewish community. Respondents who identified as Messianic Jews in this study were treated as non-Jews.

³ Saxe, L., & Tighe, E. (2013). Estimating and understanding the Jewish population in the United States. *Contemporary Jewry*, 33, 43-62; Tighe, E., Livert, D., Barnett, M., & Saxe, L. (2010). Cross-survey analysis to estimate low-incidence religious groups. *Sociological Methods & Research*, 39, 56-82; Tighe, E., Saxe, L., Kadushin, C., Magidin de Kramer, R., Nursahedov, B., Aronson, J., & Cherny, L. (2011). *Estimating the Jewish population of the United States: 2000-2010*. Waltham, MA: Steinhardt Social Research Institute, Brandeis University; Tighe, E., Saxe, L., Magidin de Kramer, R., & Parmer, D. (2013). *American Jewish population estimates: 2012*. Waltham, MA: Steinhardt Social Research Institute, Brandeis University.

⁴ Tighe et al., *American Jewish population estimates: 2012*.

⁵ cf. Hartman, H., & Sheskin, I.M. (2012). The relationship of Jewish community contexts and Jewish identity: A 22-community study. *Contemporary Jewry*, 32, 237-283.

⁶ For a description of search strategies used to identify surveys and inclusion criteria, see Tighe et al., 2010, 2011.

⁷ Smith, T.W., Marsden, P.V., & Hout, M. (2011). General Social Survey, 1972-2010 [cumulative file]. ICPSR31521-v1. Storrs, CT, and Ann Arbor, MI: Roper Center for Public Opinion Research, University of Connecticut, and Inter-university Consortium for Political and Social Research [distributors].

⁸ Baylor Institute for Studies of Religion. (2007). *The Baylor Religion Survey, Wave II*. Waco, TX: Baylor Institute for Studies of Religion, Baylor University.

⁹ Emerson, M.O., Sikkink, D., & James, A.D. (2010). The Panel Study on American Religion and Ethnicity: Background, methods, and selected results. *Journal for the Scientific Study of Religion*, 49, 162-171.

¹⁰ Series identification is included in the dataset to be able to examine differences across surveys that can be accounted for by survey series.

¹¹ Baker, R., Blumberg, S.J., Brick, J.M., Couper, M.P., Courtright, M., Dennis, J.M., Dillman, D., Frankel, M.R., Garland, P., Groves, R.M., Kennedy, C., Krosnick, J., & Lavrakas, P. (2010). Research synthesis: AAPOR report on online panels. *Public Opinion Quarterly*, 74, 711-781; Biemer, P., & Link, M.W. (2006). Evaluating and modeling early computer bias in RDD surveys. Paper presented at the Second International Conference on Telephone Survey Methodology; Blumberg, S.J., & Luke, J.V. (2014). *Wireless substitution: Early release of estimates from the*

National Health Interview Survey, July-December 2013. National Center for Health Statistics; Lavrakas, P.J., Blumberg, S., Battaglia, M., Boyle, J., Brick, M., Buskirk, T., DiSogra, C., Dutwin, D., Fahimi, M., Fienberg, H., Fleeman, A., Guterbock, T.M., Hall, J., Keeter, S., Kennedy, C., Link, M., Piekarski, L., Shuttles, C.D., Steeh, C., Tompson, T., & ZuWallack, R. (2010). *New considerations for survey researchers when planning and conducting RDD telephone surveys in the U.S. with respondents reached via cell phone numbers*. AAPOR Cell Phone Task Force; Link, M., Battaglia, M.P., Frankel, M., Osborn, L., & Mokdad, A. (2007). Reaching the U.S. cell phone generation: Comparison of cell phone survey results with an ongoing landline telephone survey. *Public Opinion Quarterly*, 71, 814-839; Pew Research Center for the People & the Press. (2006). *National polls not undermined by growing cell-only population*. Washington, DC: Pew Research Center for the People & the Press.

¹² Currently there are too few surveys of representative samples of all U.S. adults that include alternative methods of Jewish identification. Thus, the present analyses focus on the JBR population only.

¹³ Putnam, R.D., & Campbell, D.E. (2010). *American grace: How religion divides and unites us*. New York: Simon & Schuster.

¹⁴ Includes Island, Skagit, San Juan, and Whatcom counties.

¹⁵ Preliminary estimates were later readjusted after some households were screened out of the sample after being identified as Messianic Jews or non-Jews.

¹⁶ Although a small proportion of the Jewish population is non-white, the age estimates for the white-only population are assumed to be a closer approximation to the Jewish population. This is a simplifying assumption that is unlikely to affect overall estimates.

Appendix B: Survey Instrument and Codebook

Welcome Page

Welcome to the 2014 Greater Seattle Jewish Community Study on the web. This study aims to provide useful information to Jewish organizations and service providers in the Puget Sound area for policy and planning purposes. Your participation is voluntary. Any information you provide will remain strictly confidential and used solely for the purposes of this research.

Throughout the survey, please use the NEXT and BACK buttons to move around in the survey. *Do not use the Forward or Back buttons on your browser.* If at any point you need to take a break, simply close the browser window. Your responses will be saved to that point, and the survey will resume where you left off when you return to it. (Please keep your access code handy to be able to log in again.)

The Cohen Center for Modern Jewish Studies at Brandeis University is conducting this research on behalf of the Jewish Federation of Greater Seattle. If you have any questions or concerns about the research, please contact the Cohen Center at 781-736-2964 or seattle@brandeis.edu. You may also contact the Brandeis Committee for the Protection of Human Subjects at 781-736-8133 or irb@brandeis.edu. This committee works to safeguard the interests of individuals who participate in Brandeis-sponsored research.

Thank you for participating in the research. Please click on the NEXT button to begin the survey.

Screener

Do you live in the Puget Sound region for any part of the year?

Response	Weighted %	n
No	8	399
Yes	92	4,853
Total	100	5,252

What is the ZIP code of your Puget Sound address?

Response	Weighted %	n
98001	<1	<10
98002	<1	<10
98003	<1	13
98004	2	105
98005	1	65
98006	3	139
98007	1	50
98008	1	67
98010	<1	<10
98011	<1	20
98012	1	41
98013	<1	<10
98014	<1	<10
98019	<1	<10
98020	1	30
98021	<1	18
98022	<1	<10
98023	<1	20
98024	<1	<10
98025	<1	<10
98026	1	31
98027	1	63
98028	<1	18
98029	1	44
98030	<1	10
98031	<1	10

98032	<1	12
98033	2	85
98034	1	46
98036	1	28
98037	<1	<10
98038	<1	21
98039	<1	11
98040	8	397
98042	<1	23
98043	<1	11
98045	<1	12
98047	<1	<10
98049	<1	<10
98050	<1	<10
98051	<1	<10
98052	2	112
98053	1	36
98054	<1	<10
98055	<1	<10
98056	<1	22
98057	<1	<10
98058	<1	20
98059	1	39
98062	<1	<10
98065	<1	15
98070	<1	21
98072	<1	22
98073	<1	<10
98074	1	37
98075	1	42
98077	<1	20
98082	<1	<10
98087	<1	16
98092	<1	12
98101	1	42
98102	2	100
98103	4	176
98104	<1	12
98105	3	133
98106	<1	23
98107	1	62

98108	<1	13
98109	1	68
98110	1	48
98111	<1	<10
98112	3	155
98113	<1	<10
98114	<1	<10
98115	6	296
98116	1	50
98117	2	78
98118	4	184
98119	2	77
98121	1	30
98122	2	107
98125	2	93
98126	<1	21
98127	<1	<10
98133	1	51
98134	<1	<10
98136	1	33
98144	1	51
98146	<1	18
98155	1	46
98166	<1	14
98168	<1	11
98176	<1	<10
98177	1	40
98178	<1	11
98188	<1	<10
98192	<1	<10
98195	<1	<10
98198	<1	17
98199	1	57
98201	<1	18
98203	<1	11
98204	<1	<10
98208	<1	23
98221	<1	<10
98223	<1	14
98225	<1	10
98226	<1	<10

98227	<1	<10
98229	<1	<10
98230	<1	<10
98232	<1	<10
98233	<1	<10
98236	<1	<10
98239	<1	<10
98245	<1	<10
98249	<1	<10
98250	<1	<10
98252	<1	<10
98253	<1	<10
98256	<1	<10
98257	<1	<10
98258	<1	20
98260	<1	<10
98270	<1	<10
98271	<1	<10
98272	<1	10
98274	<1	<10
98275	<1	13
98277	<1	13
98282	<1	<10
98290	<1	11
98292	<1	<10
98296	<1	10
98301	<1	<10
98303	<1	<10
98310	<1	<10
98311	<1	<10
98312	<1	11
98321	<1	<10
98322	<1	<10
98325	<1	<10
98327	<1	<10
98328	<1	<10
98329	<1	<10
98332	<1	13
98333	<1	<10
98335	<1	11
98337	<1	<10

98338	<1	10
98340	<1	<10
98346	<1	<10
98349	<1	<10
98354	<1	<10
98358	<1	<10
98360	<1	<10
98362	<1	<10
98366	<1	<10
98367	<1	10
98368	<1	<10
98369	<1	<10
98370	<1	22
98371	<1	13
98372	<1	<10
98373	<1	<10
98374	<1	17
98375	<1	10
98382	<1	<10
98383	<1	<10
98386	<1	<10
98387	<1	<10
98388	<1	<10
98390	<1	<10
98391	<1	14
98394	<1	<10
98402	<1	<10
98403	<1	<10
98404	<1	<10
98405	<1	<10
98406	<1	13
98407	<1	13
98408	<1	<10
98409	<1	<10
98418	<1	<10
98422	<1	<10
98424	<1	<10
98433	<1	<10
98443	<1	<10
98444	<1	10
98445	<1	10

98446	<1	<10
98465	<1	<10
98466	<1	13
98467	<1	<10
98470	<1	<10
98498	<1	<10
98499	<1	11
98501	<1	<10
98502	<1	<10
98503	<1	<10
98506	<1	<10
98508	<1	<10
98512	<1	<10
98513	<1	<10
98516	<1	<10
98520	<1	<10
98532	<1	<10
98579	<1	<10
98580	<1	<10
98583	<1	<10
98584	<1	<10
98597	<1	<10
98725	<1	<10
98801	<1	<10
98815	<1	<10
98831	<1	<10
98903	<1	<10
98908	<1	<10
99005	<1	<10
99026	<1	<10
99203	<1	<10
99999	3	145
Total	100	4,819

Do you or any other adult in your household consider themselves to be Jewish?

Response	Weighted %	n
No	37	1,782
Yes	63	3,036
Total	100	4,818

Do you or any adult in your household have a Jewish parent or were raised Jewish?

Response	Weighted %	n
No	93	1,661
Yes	7	123
Total	100	1,784

Demographics

Survey starts here for households screened into survey

What is your gender?

Response	Weighted %	n
Female	59	1,854
Male	40	1,141
Other	<1	6
Total	100	3,001

How old are you?

Response	Weighted %	n
18-29	9	243
30-39	19	468
40-49	18	541
50-59	20	654
60-69	23	678
70-79	7	259
80-89	3	96
90+	1	21
Total	100	2,960

What is the highest level of schooling you have completed?

Response	Weighted %	n
Less than high school diploma	1	4
High school diploma	2	41
Some college or technical school	6	202
Associate or technical degree	3	75
Bachelor's degree	30	993
Master's degree	36	991
Doctorate or professional degree	20	641
Other	3	56
Total	100	3,003

Please specify the highest level of schooling you have completed:

[if "other"]

56 responses

In what country were you born?

Response	Weighted %	n
United States	87	2,614
Russia or Former Soviet Union	3	62
Israel	2	79
Other	8	227
Total	100	2,982

Please specify the country where you were born:

[if "other"]

221 responses

Where were you raised primarily (city, state, country)?

2790 responses

What is your religion, if any?

Response	Weighted %	n
Jewish	62	2,595
Jewish and something else	10	118
Catholic	<1	4
Protestant	<1	10
Christian	<1	3
Buddhist	<1	6
Atheist	10	92
Agnostic	9	82
Other	7	73
Total	100	2,983

What is the other religion?
[if “Jewish and something else”]
114 responses

Please specify your religion:
[if “other”]
68 responses

Aside from religion, do you consider yourself Jewish?

Response	Weighted %	n
No	6	46
Yes	94	224
Total	100	270

Were either of your parents Jewish?

Response	Weighted %	n
Father	8	130
Mother	12	222
Father and Mother	73	2,361
Neither	8	271
Total	100	2,984

Were you raised:

Response	Weighted %	n
Jewish	70	2,358
Jewish and something else	7	112
No religion	14	269
Other religion	9	235
Total	100	2,974

What was the other religion?

[If “other religion”]

105 responses

What was the other religion?

[If “Jewish and something else”]

235 responses

Did you have a formal conversion to Judaism?

Response	Weighted %	n
No	72	206
Yes	28	218
Total	100	424

During grades K-12, did you ever...

Attend a Jewish day school

Response	Weighted %	n
No	85	1,989
Yes	15	417
Total	100	2,406

Attend a supplementary Jewish school, like Hebrew or Sunday school

Response	Weighted %	n
No	33	643
Yes	67	1,967
Total	100	2,610

Attend a Jewish day or overnight camp

Response	Weighted %	n
Yes	47	1,386
No	53	1,151
Total	100	2,537

Participate in a Jewish youth group

Response	Weighted %	n
No	52	1,067
Yes	48	1,434
Total	100	2,501

Did you have a Bar or Bat Mitzvah?

Response	Weighted %	n
As a child	47	1,496
As an adult	4	144
No	48	1,076
Total	100	2,716

With which branch of Judaism do you currently identify, if any?

Response	Weighted %	n
Orthodox	6	205
Conservative	14	614
Reconstructionist	2	51
Reform	29	1,172
Renewal	1	36
Secular/culturally Jewish	29	430
Just Jewish	16	291
Other	4	108
Total	100	2,907

What is that denomination?

[If "other]

105 responses

Regarding your Jewish ethnicity, do you consider yourself to be Ashkenazi, Sephardi, Mizrachi, or something else?

Response	Weighted %	n
Ashkenazi	82	2,351
Sephardi	8	264
Mizrachi	1	18
Something Else	9	225
Total	100	2,858

What is that something else:

[if “something else”]

175 responses

Other Adults Living in the Household

How many adults (age 18 or older) usually live in your household—including yourself?

Response	Weighted %	n
1	32	784
2	55	1,789
3	8	300
4	4	141
5	1	25
6	<1	5
7	<1	3
9	<1	2
Total	100	3,049

Thinking about the *second* adult in your household other than yourself...

What is your relationship to this adult?

Response	Weighted %	n
Your spouse	81	1,892
Your adult child	3	75
Your stepchild	0	0
Your parent	3	46
Your step-parent	0	0
Your mother- or father-in-law	<1	1
Your daughter- or son-in-law	0	0
Your sibling	1	17
Your fiance/e	1	29
Your significant other or partner	7	115
Your roommate/housemate	3	43
Other	1	9
Total	100	2,227

What is this adult's gender?

Response	Weighted %	n
Female	47	931
Male	53	1,301
Other	<1	3
Total	100	2,235

What is this adult's age?

Response	Weighted %	n
18-29	8	165
30-39	22	379
40-49	22	429
50-59	21	489
60-69	19	453
70-79	6	153
80-89	3	56
90+	<1	10
Total	100	2,134

What is this adult's religion?

Response	Weighted %	n
Jewish	41	1,405
Jewish and something else	3	35
Catholic	5	94
Protestant	4	74
Baptist	<1	5
Christian	5	66
Orthodox Christian	<1	2
Mormon	<1	1
Buddhist	2	23
Hindu	<1	4
Muslim	<1	4
Atheist	14	159
Agnostic	17	193
Other	9	153
Total	100	2,218

What is this adult's religion?

[If “Jewish and something else”]

32 responses

What is this adult's religion?

[If “other”]

143 responses

Aside from religion, does this adult consider themselves Jewish?

Response	Weighted %	n
No	88	667
Yes	12	108
Total	100	775

Were/are either of this adult's parents Jewish?

Response	Weighted %	n
Father	5	71
Mother	5	110
Father and Mother	36	1,148
Neither	54	897
Total	100	2,226

In what religion were they raised?

Response	Weighted %	n
Jewish	35	1,158
Jewish and something else	2	40
No religion	22	319
Other religion	41	701
Total	100	2,218

In what religion were they raised?

[If "Jewish or something else"]

35 responses

In what religion were they raised?

[If "other"]

697 responses

Did they have a formal conversion to Judaism?

Response	Weighted %	n
No	61	167
Yes	39	171
Total	100	338

With which branch of Judaism do they currently identify, if any?

Response	Weighted %	n
Orthodox	8	132
Conservative	18	362
Reconstructionist	1	20
Reform	32	589
Renewal	1	11
Secular/culturally Jewish	22	195
Just Jewish	14	187
Other	4	46
Total	100	1,542

With which branch of Judaism do they currently identify, if any?

[If “other”]

43 responses

Thinking about the *third* adult in your household...

What is your relationship to this adult?

Response	Weighted %	n
Your spouse	1	5
Your adult child	66	333
Your stepchild	1	11
Your parent	11	40
Your step-parent	<1	2
Your mother- or father-in-law	2	9
Your daughter- or son-in-law	1	6
Your sibling	3	8
Your fiance/e	0	0
Your significant other or part	1	3
Your roommate/housemate	9	23
Other	4	19
Total	100	459

What is this adult's gender?

Response	Weighted %	n
Female	48	223
Male	51	233
Other	1	4
Total	100	460

What is this adult's age?

Response	Weighted %	n
18-29	70	339
30-39	12	26
40-49	3	17
50-59	11	32
60-69	4	16
70-79	1	6
80-89	1	4
90+	1	1
Total	100	441

What is this adult's religion?

Response	Weighted %	n
Jewish	46	340
Jewish and something else	13	21
Catholic	1	9
Protestant	1	5
Baptist	0	0
Christian	5	7
Orthodox Christian	0	0
Mormon	0	0
Buddhist	2	4
Hindu	<1	2
Muslim	1	3
Atheist	16	22
Agnostic	10	23
Other	4	17
Total	100	453

What is this adult's religion?

[If "Jewish and something else"]

21 responses

What is this adult's religion?

[If “other”]

16 responses

Aside from religion, does this adult consider themselves Jewish?

Response	Weighted %	n
No	79	76
Yes	21	15
Total	100	91

Were/are either of this adult's parents Jewish?

Response	Weighted %	n
Father	19	43
Mother	21	82
Father and Mother	34	258
Neither	26	70
Total	100	453

In what religion were they raised?

Response	Weighted %	n
Jewish	45	322
Jewish and something else	7	22
No religion	28	56
Other religion	19	50
Total	100	450

In what religion were they raised?

[If “Jewish or something else”]

21 responses

In what religion were they raised?
 [If “other”]
 48 responses

Did they have a formal conversion to Judaism?

Response	Weighted %	n
No	85	19
Yes	15	10
Total	100	29

With which branch of Judaism do they currently identify, if any?

Response	Weighted %	n
Orthodox	6	37
Conservative	9	62
Reconstructionist	2	4
Reform	31	143
Renewal	<1	2
Secular/culturally Jewish	27	48
Just Jewish	23	72
Other	2	7
Total	100	375

With which branch of Judaism do they currently identify, if any?
 [If “other”]
 6 responses

Thinking about the *fourth* adult in your household...

What is your relationship to this adult?

Response	Weighted %	n
Your spouse	<1	2
Your adult child	61	112
Your stepchild	1	4
Your parent	2	8
Your step-parent		
Your mother- or father-in-law	2	4
Your daughter- or son-in-law	6	5
Your sibling	5	9
Your fiance/e	1	2
Your significant other or partner	0	0
Your roommate/housemate	21	14
Other	<1	1
Total	100	161

What is this adult's gender?

Response	Weighted %	n
Female	40	73
Male	59	85
Other	1	2
Total	100	160

What is this adult's age?

Response	Weighted %	n
18-29	72	124
30-39	20	8
40-49	<1	1
50-59	2	7
60-69	2	8
70-79	<1	1
80-89	2	2
90+	1	2
Total	100	153

What is this adult's religion?

Response	Weighted %	n
Jewish	34	107
Jewish and something else	12	12
Catholic	0	0
Protestant	13	2
Baptist	0	0
Christian	3	5
Orthodox Christian	<1	1
Mormon	0	0
Buddhist	6	2
Hindu	0	0
Muslim	<1	1
Atheist	20	11
Agnostic	5	8
Other	7	8
Total	100	157

What is this adult's religion?

[If "Jewish and something else"]

11 responses

What is this adult's religion?
 [If “other”]
 6 responses

Aside from religion, does this adult consider themselves Jewish?

Response	Weighted %	n
No	92	29
Yes	8	9
Total	100	91

Were/are either of this adult's parents Jewish?

Response	Weighted %	n
Father	31	21
Mother	14	24
Father and Mother	25	93
Neither	29	22
Total	100	160

In what religion were they raised?

Response	Weighted %	n
Jewish	34	111
Jewish and something else	7	7
No religion	31	21
Other religion	28	19
Total	100	158

In what religion were they raised?
 [If “Jewish or something else”]
 6 responses

In what religion were they raised?
 [If “other”]
 18 responses

Did they have a formal conversion to Judaism?

Response	Weighted %	n
No	83	6
Yes	17	3
Total	100	9

With which branch of Judaism do they currently identify, if any?

Response	Weighted %	n
Orthodox	7	12
Conservative	10	23
Reconstructionist	0	1
Reform	27	39
Renewal	1	2
Secular/culturally Jewish	18	21
Just Jewish	34	25
Other	3	4
Total	100	127

With which branch of Judaism do they currently identify, if any?
 [If “other”]
 3 responses

Thinking about the *fifth* adult in your household...

What is your relationship to this adult?

Response	Weighted %	n
Your spouse	3	2
Your adult child	19	13
Your stepchild	3	2
Your parent	1	2
Your step-parent	0	0
Your mother- or father-in-law	0	0
Your daughter- or son-in-law	2	1
Your sibling	11	3
Your fiance/e	0	0
Your significant other or partner	2	1
Your roommate/housemate	58	5
Other	1	1
Total	100	30

What is this adult's gender?

Response	Weighted %	n
Female	15	11
Male	83	18
Other	2	1
Total	100	30

What is this adult's age?

Response	Weighted %	n
18-29	32	20
30-39	64	5
40-49	0	0
50-59	0	0
60-69	1	2
70-79	1	1
80-89	0	0
90+	2	1
Total	100	29

What is this adult's religion?

Response	Weighted %	n
Jewish	16	14
Jewish and something else	7	4
Catholic	0	0
Protestant	6	1
Baptist	0	0
Christian	10	3
Orthodox Christian	1	1
Mormon	0	0
Buddhist	5	1
Hindu	0	0
Muslim	0	0
Atheist	1	1
Agnostic	6	2
Other	48	2
Total	100	29

What is this adult's religion?

[If "Jewish and something else"]

3 responses

What is this adult's religion?

[If “other”]

2 responses

Aside from religion, does this adult consider themselves Jewish?

Response	Weighted %	n
No	94	10
Yes	6	1
Total	100	11

Were/are either of this adult's parents Jewish?

Response	Weighted %	n
Father	9	4
Mother	11	3
Father and Mother	17	19
Neither	64	9
Total	100	30

In what religion were they raised?

Response	Weighted %	n
Jewish	17	15
Jewish and something else	9	3
No religion	53	5
Other religion	21	6
Total	100	29

In what religion were they raised?

[If “Jewish or something else”]

3 responses

In what religion were they raised?
 [If “other”]
 6 responses

Did they have a formal conversion to Judaism?

Response	Weighted %	n
No	92	1
Yes	8	1
Total	100	2

With which branch of Judaism do they currently identify, if any?

Response	Weighted %	n
Orthodox	13	4
Conservative	11	3
Reconstructionist	0	0
Reform	25	5
Renewal	3	1
Secular/culturally Jewish	31	4
Just Jewish	16	2
Other	0	0
Total	100	19

Thinking about the *sixth* adult in your household...

What is your relationship to this adult?

Response	Weighted %	n
Your spouse	0	0
Your adult child	40	3
Your step-child	0	0
Your parent	39	1
Your step-parent	0	0
Your mother- or father-in-law	0	0
Your daughter- or son-in-law	0	0
Your sibling	0	0
Your fiance/e	0	0
Your significant other or partner	12	1
Your roommate/housemate	9	1
Other	0	0
Total	100	6

What is this adult's gender?

Response	Weighted %	n
Female	28	1
Male	60	4
Other	12	1
Total	100	6

What is this adult's age?

Response	Weighted %	n
18-29	56	4
30-39	0	0
40-49	0	0
50-59	44	1
60-69	0	0
70-79	0	0
80-89	0	0
90+	0	0
Total	100	5

What is this adult's religion?

Response	Weighted %	n
Jewish	33	4
Jewish and something else	28	1
Catholic	39	1
Protestant	0	0
Baptist	0	0
Christian	0	0
Orthodox Christian	0	0
Mormon	0	0
Buddhist	0	0
Hindu	0	0
Muslim	0	0
Atheist	0	0
Agnostic	0	0
Other	0	0
Total	100	6

What is this adult's religion?

[If "Jewish and something else"]

1 response

Aside from religion, does this adult consider themselves Jewish?

Response	Weighted %	n
No	100	1
Yes	0	0
Total	100	1

Were/are either of this adult's parents Jewish?

Response	Weighted %	n
Father	15	2
Mother	28	1
Father and Mother	17	2
Neither	39	1
Total	100	6

In what religion were they raised?

Response	Weighted %	n
Jewish	24	3
Jewish and something else	28	1
No religion	9	1
Other religion	39	1
Total	100	6

In what religion were they raised?

[If "Jewish or something else"]

1 response

In what religion were they raised?

[If "other"]

1 response

Did they have a formal conversion to Judaism?

Response	Weighted %	n
No	100	1
Yes	0	0
Total	100	1

With which branch of Judaism do they currently identify, if any?

Response	Weighted %	n
Orthodox	0	0
Conservative	0	0
Reconstructionist	0	0
Reform	39	3
Renewal	0	0
Secular/culturally Jewish	15	1
Just Jewish	0	0
Other	47	1
Total	100	5

With which branch of Judaism do they currently identify, if any?

[If “other”]

1 response

Thinking about the *seventh* adult in your household...

What is your relationship to this adult?

Response	Weighted %	n
Your spouse	0	0
Your adult child	0	0
Your step-child	0	0
Your parent	44	1
Your step-parent	0	0
Your mother- or father-in-law	0	0
Your daughter- or son-in-law	0	0
Your sibling	0	0
Your fiance/e	0	0
Your significant other or partner	13	1
Your roommate/housemate	43	2
Other	0	0
Total	100	4

What is this adult's gender?

Response	Weighted %	n
Female	44	1
Male	43	2
Other	13	1
Total	100	4

What is this adult's age?

Response	Weighted %	n
18-29	49	2
30-39	0	0
40-49	0	0
50-59	51	1
60-69	0	0
70-79	0	0
80-89	0	0
90+	0	0
Total	100	3

What is this adult's religion?

Response	Weighted %	n
Jewish	57	2
Jewish and something else	0	0
Catholic	0	0
Protestant	32	1
Baptist	0	0
Christian	0	0
Orthodox Christian	0	0
Mormon	0	0
Buddhist	0	0
Hindu	0	0
Muslim	0	0
Atheist	0	0
Agnostic	0	0
Other	10	1
Total	100	4

Aside from religion, does this adult consider themselves Jewish?

Response	Weighted %	n
No	100	2
Yes	0	0
Total	100	2

Were/are either of this adult's parents Jewish?

Response	Weighted %	n
Father	0	0
Mother	0	0
Father and Mother	57	2
Neither	43	2
Total	100	4

In what religion were they raised?

Response	Weighted %	n
Jewish	57	2
Jewish and something else	0	0
No religion	0	0
Other religion	43	2
Total	100	4

In what religion were they raised?

[If "other"]

2 responses

With which branch of Judaism do they currently identify, if any?

Response	Weighted %	n
Orthodox	77	1
Conservative	0	0
Reconstructionist	0	0
Reform	23	1
Renewal	0	0
Secular/culturally Jewish	0	0
Just Jewish	0	0
Other	0	0
Total	100	2

Thinking about the *eighth* adult in your household...

What is your relationship to this adult?

Response	Weighted %	n
Your spouse	0	0
Your adult child	0	0
Your stepchild	0	0
Your parent	0	0
Your step-parent	0	0
Your mother- or father-in-law	0	0
Your daughter- or son-in-law	0	0
Your sibling	0	0
Your fiance/e	0	0
Your significant other or partner	0	0
Your roommate/housemate	100	2
Other	0	0
Total	100	2

What is this adult's gender?

Response	Weighted %	n
Female	44	1
Male	56	1
Other	0	0
Total	100	2

What is this adult's age?

Response	Weighted %	n
18-29	100	2
30-39	0	0
40-49	0	0
50-59	0	0
60-69	0	0
70-79	0	0
80-89	0	0
90+	0	0
Total	100	2

What is this adult's religion?

Response	Weighted %	n
Jewish	0	0
Jewish and something else	0	0
Catholic	0	0
Protestant	0	0
Baptist	0	0
Christian	0	0
Orthodox Christian	0	0
Mormon	0	0
Buddhist	0	0
Hindu	0	0
Muslim	0	0
Atheist	100	2
Agnostic	0	0
Other	0	0
Total	100	2

Aside from religion, does this adult consider themselves Jewish?

Response	Weighted %	n
No	100	2
Yes	0	0
Total	100	2

Were/are either of this adult's parents Jewish?

Response	Weighted %	n
Father	0	0
Mother	56	1
Father and mother	0	0
Neither	44	1
Total	100	2

In what religion were they raised?

Response	Weighted %	n
Jewish	56	1
Jewish and something else	0	0
No religion	44	1
Other religion	0	0
Total	100	2

Thinking about the *ninth* adult in your household...

What is your relationship to this adult?

Response	Weighted %	n
Your spouse	0	0
Your adult child	0	0
Your stepchild	0	0
Your parent	0	0
Your step-parent	0	0
Your mother- or father-in-law	0	0
Your daughter- or son-in-law	0	0
Your sibling	0	0
Your fiance/e	0	0
Your significant other or partner	0	0
Your roommate/housemate	100	2
Other	0	0
Total	100	2

What is this adult's gender?

Response	Weighted %	n
Male	44	1
Female	0	0
Other	56	1
Total	100	2

What is this adult's age?

Response	Weighted %	n
18-29	100	1
30-39	0	0
40-49	0	0
50-59	0	0
60-69	0	0
70-79	0	0
80-89	0	0
90+	0	0
Total	100	1

What is this adult's religion?

Response	Weighted %	n
Jewish	56	1
Jewish and something else	0	0
Catholic	0	0
Protestant	0	0
Baptist	0	0
Christian	0	0
Orthodox Christian	0	0
Mormon	0	0
Buddhist	0	0
Hindu	0	0
Muslim	0	0
Atheist	44	1
Agnostic	0	0
Other	0	0
Total	100	2

Aside from religion, does this adult consider themselves Jewish?

Response	Weighted %	n
No	100	1
Yes	0	0
Total	100	1

Were/are either of this adult's parents Jewish?

Response	Weighted %	n
Father	0	0
Mother	0	0
Father and Mother	56	1
Neither	44	1
Total	100	2

In what religion were they raised?

Response	Weighted %	n
Jewish	56	1
Jewish and something else	0	0
No religion	44	1
Other religion	0	0
Total	100	2

With which branch of Judaism do they currently identify, if any?

Response	Weighted %	n
Orthodox	0	0
Conservative	0	0
Reconstructionist	0	0
Reform	0	0
Renewal	0	0
Secular/culturally Jewish	0	0
Just Jewish	100	1
Other	0	0
Total	100	1

Children Living in the Household

How many children (age 17 or younger) usually live in your household?

Response	Weighted %	n
0	68	1,970
1	12	425
2	15	482
3	3	138
4	1	22
5	0	9
6	0	2
7	0	1
Total	100	3,049

In terms of religion, are all of the children in the household being raised in the same way?

Response	Weighted %	n
No	5	17
Yes	95	625
Total	100	642

Thinking about the *first* child in your household...

What is the child's age?

Response	Weighted %	n
0-4	29	213
5-9	27	262
10-17	44	460
Total	100	935

What is the child's gender?

Response	Weighted %	n
Female	51	491
Male	49	571
Other	<1	1
Total	100	1,063

What is your relationship to the child?

Response	Weighted %	n
Your child	93	1,020
Your stepchild	3	21
Your sibling	2	7
Your grandchild	1	5
Other	1	8
Total	100	1,061

What is your relationship to the child?

[If "other"]

7 responses

What grade were they in during the 2013-14 school year?

Response	Weighted %	n
Not yet in Kindergarten	32	253
Grade K-5	27	315
Grade 6-8	14	171
Grade 9-12	27	312
Other	<1	7
Total	100	1,058

What grade were they in during the 2013-14 school year?
 [If “other”]
 5 responses

In what religion is the child being raised?

Response	Weighted %	n
Jewish	60	873
Another religion	2	7
Jewish and something else	10	61
No religion	26	93
Not yet decided	3	26
Total	100	1,060

In what religion is the child being raised?
 [If “another religion”]
 65 responses

Did this child have a Bar or Bat Mitzvah

Response	Weighted %	n
No	37	118
Yes	63	319
Total	100	437

Thinking about the *second* child in your household...

What is the child's age?

Response	Weighted %	n
0-4	37	190
5-9	26	205
10-17	37	231
Total	100	626

What is the child's gender?

Response	Weighted %	n
Female	45	314
Male	55	325
Other	0	0
Total	100	639

What is your relationship to the child?

Response	Weighted %	n
Your child	89	613
Your stepchild	5	14
Your sibling	4	3
Your grandchild	1	5
Other	1	3
Total	100	639

What is your relationship to the child?

[If "other"]

4 responses

What grade were they in during the 2013-14 school year?

Response	Weighted %	n
Not yet in Kindergarten	40	217
Grade K-5	31	244
Grade 6-8	18	123
Grade 9-12	10	52
Other	<1	3
Total	100	639

What grade were they in during the 2013-14 school year?

[If “other”]

2 responses

In what religion is the child being raised?

Response	Weighted %	n
Jewish	12	4
Another religion	10	2
Jewish and something else	22	5
No religion	55	5
Not yet decided	1	1
Total	100	17

In what religion is the child being raised?

[If “another religion”]

7 responses

Did this child have a Bar or Bat Mitzvah

Response	Weighted %	n
No	56	46
Yes	44	94
Total	100	140

Thinking about the *third* child in your household...

What is the child's age?

Response	Weighted %	n
0-4	40	68
5-9	34	52
10-17	26	40
Total	100	160

What is the child's gender?

Response	Weighted %	n
Female	64	92
Male	36	72
Other	0	0
Total	100	164

What is your relationship to the child?

Response	Weighted %	n
Your child	93	154
Your stepchild	4	3
Your sibling	<1	1
Your grandchild	1	2
Other	1	1
Total	100	161

What is your relationship to the child?

[If “other”]

1 response

What grade were they in during the 2013-14 school year?

Response	Weighted %	n
Not yet in Kindergarten	42	73
Grade K-5	39	68
Grade 6-8	14	16
Grade 9-12	5	5
Other	1	1
Total	100	163

What grade were they in during the 2013-14 school year?

[If “other”]

1 response

In what religion is the child being raised?

Response	Weighted %	n
Jewish	70	8
Another religion	0	0
Jewish and something else	18	3
No religion	12	1
Not yet decided	0	0
Total	100	12

In what religion is the child being raised?

[If “another religion”]

3 responses

Did this child have a Bar or Bat Mitzvah

Response	Weighted %	n
No	26	3
Yes	74	12
Total	100	15

Thinking about the *fourth* child in your household...

What is the child’s age?

Response	Weighted %	n
0-4	36	13
5-9	13	8
10-17	51	8
Total	100	29

What is the child's gender?

Response	Weighted %	n
Female	64	17
Male	36	15
Other	0	
Total	100	32

What is your relationship to the child?

Response	Weighted %	n
Your child	59	27
Your stepchild	39	3
Your sibling	2	1
Your grandchild	0	0
Other	0	0
Total	100	31

What grade were they in during the 2013-14 school year?

Response	Weighted %	n
Not yet in Kindergarten	38	15
Grade K-5	13	10
Grade 6-8	47	5
Grade 9-12	2	2
Other	0	0
Total	100	32

In what religion is the child being raised?

Response	Weighted %	n
Jewish	28	3
Another religion	3	1
Jewish and something else	9	1
No religion	60	1
Not yet decided	0	0
Total	100	6

In what religion is the child being raised?

[If “another religion”]

2 responses

Did this child have a Bar or Bat Mitzvah?

Response	Weighted %	n
No	95	3
Yes	5	2
Total	100	5

Thinking about the *fifth* child in your household...

What is the child’s age?

Response	Weighted %	n
0-4	37	5
5-9	39	4
10-17	24	2
Total	100	11

What is the child's gender?

Response	Weighted %	n
Female	66	5
Male	34	5
Other	0	0
Total	100	10

What is your relationship to the child?

Response	Weighted %	n
Your child	82	9
Your stepchild	18	1
Your sibling	0	0
Your grandchild	0	0
Other	0	0
Total	100	10

What grade were they in during the 2013-14 school year?

Response	Weighted %	n
Not yet in Kindergarten	71	6
Grade K-5	23	4
Grade 6-8	7	1
Grade 9-12	0	0
Other	0	0
Total	100	11

In what religion is the child being raised?

Response	Weighted %	n
Jewish	11	1
Another religion	0	0
Jewish and something else	89	2
No religion	0	0
Not yet decided	0	0
Total	100	3

In what religion is the child being raised?

[If “another religion”]

2 responses

Thinking about the *sixth* child in your household...

What is the child's age?

Response	Weighted %	n
0-4	62	1
5-9	38	1
10-17	0	0
Total	100	2

What is the child's gender?

Response	Weighted %	n
Female	16	1
Male	84	2
Other	0	0
Total	100	3

What is your relationship to the child?

Response	Weighted %	n
Your child	26	2
Your stepchild	74	1
Your sibling	0	0
Your grandchild	0	0
Other	0	0
Total	100	3

What grade were they in during the 2013-14 school year?

Response	Weighted %	n
Not yet in Kindergarten	16	1
Grade K-5	10	1
Grade 6-8	0	0
Grade 9-12	74	1
Other	0	0
Total	100	3

Did this child have a Bar or Bat Mitzvah

Response	Weighted %	n
No	100	1
Yes	0	0
Total	100	1

Thinking about the *seventh* child in your household...

What is the child's age?

Response	Weighted %	n
0-4	100	1
5-9	0	0
10-17	0	0
Total	100	1

What is the child's gender?

Response	Weighted %	n
Female	0	0
Male	100	1
Other	0	0
Total	100	1

What is your relationship to the child?

Response	Weighted %	n
Your child	100	1
Your step-child	0	0
Your sibling	0	0
Your grandchild	0	0
Other	0	0
Total	100	1

What grade were they in during the 2013-14 school year?

Response	Weighted %	n
Not yet in Kindergarten	100	1
Grade K-5	0	0
Grade 6-8	0	0
Grade 9-12	0	0
Other	0	0
Total	100	1

Adult Children Living in the Household

Thinking about the *first* adult child in your household...

Where does your adult child live for most of the year?

Response	Weighted %	n
At home	30	33
In a college dorm	33	19
Other	38	25
Total	100	77

Where does your adult child live for most of the year?

[If “other”]

25 responses

Which of the following are reasons that your child lives with you now?

They are a full time student

Response	Weighted %	n
is not a reason	40	13
is a reason	60	12
Total	100	25

He/she does not have a job

Response	Weighted %	n
is not a reason	21	7
is a reason	79	17
Total	100	24

He/she is in a transitional period

Response	Weighted %	n
is not a reason	25	7
is a reason	75	19
Total	100	26

He/she likes living here

Response	Weighted %	n
is not a reason	21	7
is a reason	79	20
Total	100	27

What is the last grade or level of schooling that he/she has completed?

Response	Weighted %	n
High school or less	49	38
Associate degree	10	6
Bachelor's degree	15	24
Master's degree	3	2
Professional degree	0	0
Doctoral degree	<1	1
Other	22	6
Total	100	77

What is the last grade or level of schooling that he/she has completed?

[If “other”]

6 responses

Is he/she currently a student in a degree-granting program in a college or university?

Response	Weighted %	n
Full-Time	66	35
Part-Time	6	5
No	28	36
Total	100	76

In what level of schooling is he/she currently enrolled?

Response	Weighted %	n
Associate degree	7	6
Bachelor's degree	62	29
Master's degree	30	4
Professional degree	0	0
Doctoral degree	0	0
Other	1	1
Total	100	40

In what level of schooling is he/she currently enrolled?

[If “other”]

1 response

Is he/she currently employed?

Response	Weighted %	n
Full-Time	20	22
Part-Time	38	23
No	43	32
Total	100	77

Is he/she currently looking for work?

Response	Weighted %	n
No	79	50
Yes	21	23
Total	100	73

Thinking about the *second* adult child in your household...

Where does your adult child live for most of the year?

Response	Weighted %	n
At home	34	115
In a college dorm	40	120
Other	26	91
Total	100	326

Where does your adult child live for most of the year?

[If “other”]

89 responses

Which of the following are reasons that your child lives with you now?

They are a full time student

Response	Weighted %	n
is not a reason	49	57
is a reason	51	42
Total	100	99

He/she does not have a job

Response	Weighted %	n
is not a reason	16	21
is a reason	84	72
Total	100	93

He/she is in a transitional period

Response	Weighted %	n
is not a reason	28	30
is a reason	72	66
Total	100	96

He/she likes living here

Response	Weighted %	n
is not a reason	17	28
is a reason	83	60
Total	100	88

What is the last grade or level of schooling that he/she has completed?

Response	Weighted %	n
High school or less	61	168
Associate degree	8	32
Bachelor's degree	23	88
Master's degree	1	5
Professional degree	0	0
Doctoral degree	1	3
Other	7	1
Total	100	326

What is the last grade or level of schooling that he/she has completed?

[If "other"]

28 responses

Is he/she currently a student in a degree-granting program in a college or university?

Response	Weighted %	n
Full-Time	61	184
Part-Time	5	21
No	35	121
Total	100	326

In what level of schooling is he/she currently enrolled?

Response	Weighted %	n
Associate degree	11	14
Bachelor's degree	72	160
Master's degree	8	11
Professional degree	5	8
Doctoral degree	3	8
Other	2	8
Total	100	209

In what level of schooling is he/she currently enrolled?

[If "other"]

8 responses

Is he/she currently employed?

Response	Weighted %	n
Full-Time	21	57
Part-Time	31	134
No	47	134
Total	100	325

Is he/she currently looking for work?

Response	Weighted %	n
No	73	223
Yes	27	90
Total	100	323

Thinking about the *third* adult child in your household...

Where does your adult child live for most of the year?

Response	Weighted %	n
At home	27	36
In a college dorm	32	40
Other	40	34
Total	100	110

Where does your adult child live for most of the year?

[If “other”]

34 responses

Which of the following are reasons that your child lives with you now?

They are a full time student

Response	Weighted %	n
is not a reason	43	14
is a reason	57	20
Total	100	34

He/she does not have a job

Response	Weighted %	n
is not a reason	44	12
is a reason	56	15
Total	100	27

He/she is in a transitional period

Response	Weighted %	n
is not a reason	14	8
is a reason	86	22
Total	100	30

He/she likes living here

Response	Weighted %	n
is not a reason	41	11
is a reason	59	16
Total	100	27

What is the last grade or level of schooling that he/she has completed?

Response	Weighted %	n
High school or less	77	69
Associate degree	4	8
Bachelors degree	12	18
Masters degree	<1	1
Professional degree	1	1
Doctoral degree	<1	1
Other	5	9
Total	100	107

What is the last grade or level of schooling that he/she has completed?

[If “other”]

8 responses

Is he/she currently a student in a degree-granting program in a college or university?

Response	Weighted %	n
Full-Time	78	65
Part-Time	2	6
No	20	38
Total	100	109

In what level of schooling is he/she currently enrolled?

Response	Weighted %	n
Associate degree	4	4
Bachelor's degree	91	59
Master's degree	0	0
Professional degree	0	0
Doctoral degree	3	4
Other	2	4
Total	100	71

In what level of schooling is he/she currently enrolled?

[If "other"]

3 responses

Is he/she currently employed?

Response	Weighted %	n
Full-Time	22	19
Part-Time	25	39
No	53	51
Total	100	109

Is he/she currently looking for work?

Response	Weighted %	n
No	76	81
Yes	24	27
Total	100	108

Thinking about the *fourth* adult child in your household...

Where does your adult child live for most of the year?

Response	Weighted %	n
At home	52	7
In a college dorm	42	5
Other	6	1
Total	100	13

Where does your adult child live for most of the year?

[If "other"]

1 response

Which of the following are reasons that your child lives with you now?

They are a full time student

Response	Weighted %	n
is not a reason	0	0
is a reason	100	7
Total	100	34

He/she does not have a job

Response	Weighted %	n
is not a reason	22	2
is a reason	78	3
Total	100	5

He/she is in a transitional period

Response	Weighted %	n
is not a reason	72	2
is a reason	28	2
Total	100	4

He/she likes living here

Response	Weighted %	n
is not a reason	16	1
is a reason	84	2
Total	100	3

What is the last grade or level of schooling that he/she has completed?

Response	Weighted %	n
High school or less	36	7
Associate degree	0	0
Bachelor's degree	33	3
Master's degree	0	0
Professional degree	0	0
Doctoral degree	0	0
Other	32	3
Total	100	13

What is the last grade or level of schooling that he/she has completed?

[If "other"]

3 responses

Is he/she currently a student in a degree-granting program in a college or university?

Response	Weighted %	n
Full-Time	80	9
Part-Time	5	1
No	15	3
Total	100	13

In what level of schooling is he/she currently enrolled?

Response	Weighted %	n
Associate degree	5	1
Bachelor's degree	27	5
Master's degree	0	0
Professional degree	7	1
Doctoral degree	55	2
Other	6	1
Total	100	10

In what level of schooling is he/she currently enrolled?

[If "other"]

1 responses

Is he/she currently employed?

Response	Weighted %	n
Full-Time	6	1
Part-Time	42	5
No	51	7
Total	100	13

Is he/she currently looking for work?

Response	Weighted %	n
No	63	9
Yes	37	4
Total	100	13

Thinking about the *fifth* adult child in your household...

Where does your adult child live for most of the year?

Response	Weighted %	n
At home	70	1
In a college dorm	30	2
Other	0	0
Total	100	3

Which of the following are reasons that your child lives with you now?

They are a full time student

Response	Weighted %	n
is not a reason	100	1
is a reason	0	0
Total	100	1

He/she does not have a job

Response	Weighted %	n
is not a reason	0	0
is a reason	100	1
Total	100	1

He/ she is in a transitional period

Response	Weighted %	n
is not a reason	0	0
is a reason	100	1
Total	100	1

He/she likes living here

Response	Weighted %	n
is not a reason	0	0
is a reason	100	1
Total	100	1

What is the last grade or level of schooling that he/she has completed?

Response	Weighted %	n
High school or less	30	2
Associate degree	0	0
Bachelors degree	0	0
Masters degree	0	0
Professional degree	0	0
Doctoral degree	0	0
Other	70	1
Total	100	3

What is the last grade or level of schooling that he/she has completed?

[If “other”]

1 response

Is he/she currently a student in a degree-granting program in a college or university?

Response	Weighted %	n
Full-Time	30	2
Part-Time	0	0
No	70	1
Total	100	3

In what level of schooling is he/she currently enrolled?

Response	Weighted %	n
Associate degree	0	0
Bachelors degree	100	2
Masters degree	0	0
Professional degree	0	0
Doctoral degree	0	0
Other	0	0
Total	100	2

Is he/she currently employed?

Response	Weighted %	n
Full-Time	70	1
Part-Time	0	0
No	30	2
Total	100	3

Is he/she currently looking for work?

Response	Weighted %	n
No	14	1
Yes	86	2
Total	100	3

Children Living Outside the Household

How many children do you have of any age who do NOT usually live in your household? Please include both adult and minor children who do NOT usually live with you.

Response	Weighted %	n
0	67	1,709
1	9	293
2	15	535
3	6	199
4	2	70
5	<1	17
6	<1	11
7	<1	5
8	<1	2
Total	100	2,841

How many of these children live in the Puget Sound area?

Response	Weighted %	n
0	30	324
1	39	434
2	23	274
3	6	67
4	2	22
5	1	6
6	<1	2
7	<1	1
8	0	0
9	<1	1
Total	100	1,131

Residency Information

Were you born in the Puget Sound area?

Response	Weighted %	n
No	77	1,966
Yes	23	596
Total	100	2,562

In what year did you move to the Puget Sound area?

2,289 responses

Where did you live immediately before moving to the Puget Sound area?

2,285 responses

What were your primary motivations for moving to the Puget Sound area?

2,265 responses

Do you have any plans to move out of the Puget Sound area?

Response	Weighted %	n
No	90	2,637
Yes	10	281
Total	100	2,918

When do you plan to move?

Response	Weighted %	n
Within the next year	33	64
In 1-5 years	37	123
In 6-10 years	9	32
I don't know	21	60
Total	100	279

Where do you plan to move?

241 responses

What would be your primary motivations for moving?

271 responses

Do you have another home other than your Puget Sound residence?

Response	Weighted %	n
No	80	230
Yes	20	52
Total	100	282

Where is that other residence?

52 responses

Would you consider your Puget Sound address your primary residence?

Response	Weighted %	n
No	12	10
Yes	88	40
Total	100	50

What part of the year do you spend in the Puget Sound area?
51 responses

Thinking about your residence in the Puget Sound region, do you...

Response	Weighted %	n
Rent home	21	519
Own home	79	2,376
Total	100	2,895

Jewish Education, Households with One Child Not Yet in Kindergarten

Is this child currently enrolled in a Jewish preschool or daycare?

Response	Weighted %	n
No	80	179
Yes	20	75
Total	100	254

What are your primary considerations for choosing a Jewish day care or preschool?
157 responses

Has this child ever attended a Jewish preschool or daycare?

Response	Weighted %	n
No	94	166
Yes	6	13
Total	100	179

Are you considering sending this child to Jewish preschool or daycare in the future?

Response	Weighted %	n
No	64	67
Yes	19	59
Not sure	17	40
Total	100	166

Is this child currently enrolled in a preschool or daycare not sponsored by a Jewish organization?

Response	Weighted %	n
No	44	135
Yes	56	118
Total	100	253

What were your primary motivations for choosing this preschool or daycare?
115 responses

Jewish Education, Households with Multiple Children Not Yet in Kindergarten

How many of these children are currently enrolled in a Jewish preschool or daycare?

Response	Weighted %	n
0	65	83
1	23	42
2	11	22
3	<1	1
Total	100	148

What are your primary considerations for choosing a Jewish day care or preschool?

93 responses

Have any of these children ever attended a Jewish preschool or daycare?

Response	Weighted %	n
No	80	76
Yes	20	10
Total	100	86

Are you considering sending any of the children to Jewish preschool or daycare in the future?

Response	Weighted %	n
No	58	38
Yes	10	13
Not sure	32	24
Total	100	75

How many of these children are currently enrolled in a preschool or daycare not sponsored by a Jewish organization?

Response	Weighted %	n
0	39	72
1	28	39
2	33	36
3	<1	1
Total	100	148

What were your primary motivations for choosing this preschool or daycare?
75 responses

Jewish Education, Households with One Child in Kindergarten or Older

During the 2013-2014 school year, was this child enrolled in a Jewish supplementary school like Hebrew or Sunday school?

Response	Weighted %	n
No	75	253
Yes	25	126
Total	100	379

Did this child ever attend a Jewish supplementary school?

Response	Weighted %	n
No	73	160
Yes	27	91
Total	100	251

Are you considering sending this child to a Jewish supplementary school in the future?

Response	Weighted %	n
No	73	171
Yes	10	34
Not sure	18	45
Total	100	250

During the 2013-14 school year, was this child enrolled in a full-time Jewish day school or yeshiva?

Response	Weighted %	n
No	98	330
Yes	2	47
Total	100	377

Has this child ever attended a Jewish day school or yeshiva?

Response	Weighted %	n
No	93	289
Yes	7	40
Total	100	329

Are you considering sending this child to a Jewish day school or yeshiva in the future?

Response	Weighted %	n
No	87	293
Yes	2	3
Not sure	11	34
Total	100	330

What were your primary motivations in choosing this child's current school?
352 responses

What are the primary reasons that you are not considering Jewish school for this child?
66 responses

What are the primary reasons that this child no longer attends a Jewish school?
69 responses

What are your primary considerations for choosing a Jewish school for this child?
73 responses

Will this child be attending Jewish day camp in the summer of 2014?

Response	Weighted %	n
No	83	298
Yes	17	79
Total	100	377

Has this child ever attended a Jewish day camp?

Response	Weighted %	n
No	75	183
Yes	25	115
Total	100	298

Are you considering sending this child to a Jewish day camp in the future?

Response	Weighted %	n
No	62	166
Yes	15	58
Not sure	23	75
Total	100	299

Will this child be attending a Jewish overnight camp in the summer of 2014?

Response	Weighted %	n
No	84	289
Yes	16	88
Total	100	377

Has this child ever attended a Jewish overnight camp?

Response	Weighted %	n
No	86	220
Yes	14	63
Total	100	283

Are you considering sending any of the children to a Jewish overnight camp in the future?

Response	Weighted %	n
No	52	129
Yes	22	76
Not sure	26	82
Total	100	287

What are the primary reasons that you are not considering Jewish camp?

61 responses

What are the primary reasons that that this child no longer attends a Jewish camp?

38 responses

What are your primary considerations for choosing a Jewish camp?

142 responses

Will this child be attending a camp not sponsored by a Jewish organization in the summer of 2014?

Response	Weighted %	n
No	48	199
Yes	52	176
Total	100	375

Please describe briefly the camp and your motivations for selecting it.
169 responses

Did this child participate in a Jewish youth group during the 2013-2014 school year?

Response	Weighted %	n
No	86	303
Yes	14	70
Total	100	373

Has this child ever participated in a Jewish youth group?

Response	Weighted %	n
No	90	264
Yes	10	34
Total	100	298

Do you expect this child to participate in a Jewish youth group in the future?

Response	Weighted %	n
No	43	97
Yes	16	74
Not sure	41	132
Total	100	303

What are the primary reasons that you do not expect this child to participate in a Jewish youth group?
71 responses

What are the primary reasons that this child no longer participates in a Jewish youth group?
10 responses

Has this child ever gone on a peer trip to Israel with a camp, school, or youth group?

Response	Weighted %	n
No	96	123
Yes	4	15
Total	100	138

Do you expect this child to go on a peer trip to Israel?

Response	Weighted %	n
No	31	30
Yes	31	42
Not sure	38	50
Total	100	122

Has this child ever attended any other Jewish-sponsored special programs or trips?

Response	Weighted %	n
No	81	89
Yes	19	50
Total	100	139

Do you expect this child to participate in any other Jewish-sponsored special programs or trips?

Response	Weighted %	n
No	36	32
Yes	14	15
Not sure	50	40
Total	100	87

Please describe the trips and programs in which the child has participated.
50 responses

Please describe the trips and programs the child is considering for the future.
80 responses

Jewish Education, Households with Multiple Children in Kindergarten or Older

During the 2013-2014 school year, how many of these children were enrolled in a Jewish supplementary school like Hebrew or Sunday school?

Response	Weighted %	n
0	56	195
1	18	69
2	22	120
3	4	24
4	<1	1
Total	100	409

Have any of the children ever attended a Jewish supplementary school?

Response	Weighted %	n
No	63	121
Yes	37	77
Total	100	198

Are you considering sending any of the children to a Jewish supplementary school in the future?

Response	Weighted %	n
No	68	121
Yes	10	38
Not sure	22	40
Total	100	199

During the 2013-14 school year, how many of the children in your household were enrolled in a full-time Jewish day school or Yeshiva?

Response	Weighted %	n
0	95	311
1	1	27
2	3	53
3	1	13
4	<1	2
5	<1	2
6	<1	1
Total	100	409

Have any of the children ever attended a Jewish day school or yeshiva?

Response	Weighted %	n
No	85	253
Yes	15	62
Total	100	315

Are you considering sending any of the children to a Jewish day school or yeshiva in the future?

Response	Weighted %	n
No	90	273
Yes	2	11
Not sure	8	31
Total	100	315

What were your primary motivations in choosing your children's current schools?
1372 responses

What are the primary reasons that you are not considering Jewish school for your children?
38 responses

What are the primary reasons that these children no longer attend a Jewish school?
33 responses

What are your primary considerations for choosing a Jewish school for your children?
87 responses

How many of the children will be attending Jewish day camp in the summer of 2014?

Response	Weighted %	n
0	72	271
1	10	59
2	16	60
3	1	14
4	1	3
Total	100	407

Have any of the children ever attended a Jewish day camp?

Response	Weighted %	n
No	61	137
Yes	39	141
Total	100	278

Are you considering sending any of the children to a Jewish day camp in the future?

Response	Weighted %	n
No	57	137
Yes	13	55
Not sure	31	86
Total	100	278

How many of the children will be attending Jewish overnight camp in the summer of 2014?

Response	Weighted %	n
0	72	242
1	14	85
2	13	69
3	1	11
Total	100	407

Have any of the children ever attended a Jewish overnight camp?

Response	Weighted %	n
No	71	146
Yes	29	99
Total	100	245

Are you considering sending any of the children to a Jewish overnight camp in the future?

Response	Weighted %	n
No	46	81
Yes	21	86
Not sure	33	78
Total	100	245

What are the primary reasons that you are not considering Jewish camp?
49 responses

What are the primary reasons that these children no longer attend a Jewish camp?
30 responses

What are your primary considerations for choosing a Jewish camp?
170 responses

How many of the children will be attending a camp not sponsored by a Jewish organization in the summer of 2014?

Response	Weighted %	n
0	27	143
1	25	89
2	42	138
3	6	26
4	1	2
Total	100	398

Please describe briefly the camp and your motivations for selecting it.

233 responses

How many of the children participated in a Jewish youth group during the 2013-2014 school year?

Response	Weighted %	n
0	73	271
1	14	77
2	12	47
3	1	6
4	<1	2
Total	100	403

Have any of the children ever participated in a Jewish youth group?

Response	Weighted %	n
No	81	225
Yes	19	47
Total	100	272

Do you expect any of the children to participate in a Jewish youth group in the future?

Response	Weighted %	n
No	40	65
Yes	18	78
Not sure	42	131
Total	100	274

What are the primary reasons that you do not expect the children to participate in a Jewish youth group?

52 responses

What are the primary reasons that the children no longer participate in a Jewish youth group?

6 responses

What are the primary considerations for your children's plans to participate in a Jewish youth group?

162 responses

Have any of the children ever gone on a peer trip to Israel with a camp, school, or youth group?

Response	Weighted %	n
No	92	127
Yes	8	43
Total	100	170

Do you expect any of the children to go on a peer trip to Israel?

Response	Weighted %	n
No	19	19
Yes	22	44
Not sure	59	63
Total	100	126

Have any of the children ever attended any other Jewish-sponsored special programs or trips?

Response	Weighted %	n
No	75	99
Yes	25	69
Total	100	168

Do you expect any of the children to participate in any other Jewish-sponsored special programs or trips?

Response	Weighted %	n
No	58	23
Yes	5	17
Not sure	38	59
Total	100	99

Please describe the trips and programs in which the children have participated.
79 responses

Please describe the trips and programs the children are considering for the future.
84 responses

Thinking about your children's overall Jewish and general education, what are your primary motivations for the choices you have made about Jewish education for your children?
873 responses

Young Adult Respondents

Are you currently a student in a degree-granting program in a college or university?

Response	Weighted %	n
Full-time	15	58
Part-time	6	16
No	79	271
Total	100	345

What level of schooling are you currently enrolled in?

Response	Weighted %	n
Associate degree	11	3
Bachelor's degree	26	21
Master's degree	23	22
Professional degree	2	2
Doctoral degree	30	20
Other	8	6
Total	100	74

Please specify the level of schooling of your current program.

[If "other"]

6 responses

In the past SIX MONTHS, were you INVITED (in person, text, email, Facebook, etc.) by any of the following organizations to participate in activities?

Hillel

Response	Weighted %	n
No	24	62
Yes	76	276
Total	100	338

Chabad

Response	Weighted %	n
No	75	230
Yes	25	88
Total	100	318

The Stroum JCC

Response	Weighted %	n
No	68	210
Yes	32	105
Total	100	315

AIPAC

Response	Weighted %	n
No	85	244
Yes	15	65
Total	100	309

J Street or J Street U

Response	Weighted %	n
No	85	256
Yes	15	49
Total	100	305

Stand With Us

Response	Weighted %	n
No	80	236
Yes	20	71
Total	100	307

Other Jewish Organizations

Response	Weighted %	n
No	49	138
Yes	51	184
Total	100	322

In the past SIX MONTHS, did you participate in activities sponsored by any of the following organizations?

Hillel

Response	Weighted %	n
No	63	170
Yes	37	155
Total	100	325

Chabad

Response	Weighted %	n
No	92	277
Yes	8	33
Total	100	310

The Stroum JCC

Response	Weighted %	n
No	83	251
Yes	17	58
Total	100	309

AIPAC

Response	Weighted %	n
No	95	284
Yes	5	17
Total	100	301

J Street or J Street U

Response	Weighted %	n
No	95	288
Yes	5	15
Total	100	303

Stand With Us

Response	Weighted %	n
No	93	282
Yes	7	22
Total	100	304

Other Jewish Organizations

Response	Weighted %	n
No	68	197
Yes	32	122
Total	100	319

What were those other Jewish organizations?
114 responses

What kinds of activities did you do?
203 responses

In the past SIX MONTHS, did you participate in any activities sponsored by non-Jewish organizations?

Response	Weighted %	n
No	36	122
Yes	64	218
Total	100	340

What were those organizations and activities?
178 responses

Please describe briefly any other organizations and activities that interest you (e.g., social, cultural, athletic, civic, etc.).
198 responses

How interested are you in becoming more involved with the Puget Sound Jewish community?

Response	Weighted %	n
Very interested	16	66
Somewhat interested	42	153
A little interested	35	87
Not at all interested	8	28
Total	100	334

In what ways would you like to become more involved with the Puget Sound Jewish community?

217 responses

Do you currently have a partner or significant other who you do not live with?

Response	Weighted %	n
No	79	138
Yes	21	56
Total	100	194

What is the religion of your significant other?

Response	Weighted %	n
Jewish	18	12
Christian	26	16
No religion	50	22
Other	6	4
Total	100	54

What is that religion?

[If "other"]

4 responses

How important is to you to date someone Jewish?

Response	Weighted %	n
Not important	30	22
A little important	25	28
Somewhat important	22	38
Very important	23	49
Total	100	137

How important is to you to marry someone Jewish?

Response	Weighted %	n
Not important	26	32
A little important	30	40
Somewhat important	19	50
Very important	26	72
Total	100	194

Thinking about the future, how important is to to you to raise your children Jewish?

Response	Weighted %	n
Not important	5	10
A little important	20	28
Somewhat important	23	72
Very important	52	221
Total	100	331

Religious Life

How many of the people you consider to be your closest friends are Jewish?

Response	Weighted %	n
None	9	194
Some	48	1,118
About half	21	611
Most	20	848
All	2	116
Total	100	2,887

Aside from occasions like weddings and funerals, how often do you attend any type of organized Jewish religious services?

Response	Weighted %	n
Never	33	434
Once or twice a year	31	891
Every few months	17	695
About once a month	8	359
Two or three times a month	6	273
Once a week or more	6	235
Total	100	2,887

How often do you or someone in your household light Shabbat candles on a Friday night?

Response	Weighted %	n
Never	53	1,069
Sometimes	29	990
Usually	10	431
Always	9	387
Total	100	2,877

In a typical year, do you or someone in your household...

Attend or hold a Passover seder

Response	Weighted %	n
No	21	291
Yes	79	2,594
Total	100	2,885

Light Hanukkah candles

Response	Weighted %	n
No	16	210
Yes	84	2,669
Total	100	2,879

Attend High Holiday services in the fall

Response	Weighted %	n
No	29	504
Yes	71	1,923
Total	100	2,427

Thinking about the last time you attended Jewish religious services, to what extent do you agree or disagree with the following statements?

I was warmly welcomed

Response	Weighted %	n
Strongly disagree	3	77
Slightly disagree	6	122
Neither agree nor disagree	13	319
Slightly agree	25	601
Strongly agree	53	1,298
Total	100	2,417

I did not understand what was going on

Response	Weighted %	n
Strongly disagree	60	1,580
Slightly disagree	17	380
Neither agree nor disagree	10	186
Slightly agree	9	194
Strongly agree	3	72
Total	100	2,413

I was bored

Response	Weighted %	n
Strongly disagree	35	917
Slightly disagree	22	487
Neither agree nor disagree	19	433
Slightly agree	20	465
Strongly agree	4	107
Total	100	2,409

I was inspired or emotionally involved

Response	Weighted %	n
Strongly disagree	7	137
Slightly disagree	11	248
Neither agree nor disagree	23	491
Slightly agree	34	881
Strongly agree	25	667
Total	100	2,424

I felt connected to the other people there

Response	Weighted %	n
Strongly disagree	5	124
Slightly disagree	12	244
Neither agree nor disagree	16	342
Slightly agree	33	819
Strongly agree	34	891
Total	100	2,420

Which of the following best describes your current practices regarding keeping kosher?

Response	Weighted %	n
Don't follow kosher rules at all	69	1,712
Follow some kosher rules	22	776
Keep kosher only at home	3	152
Keep kosher all the time	6	241
Total	100	2,881

Do you or anyone in your household currently belong to a synagogue, temple, minyan, havurah, or High Holy Day congregation in the Puget Sound area?

Response	Weighted %	n
No	63	1,250
Yes	37	1,625
Total	100	2,875

How many congregations?

Response	Weighted %	n
1	88	1,461
2	10	157
3	2	16
4	<1	1
Total	100	1,635

What are the name, city, and length of membership for the *first* congregation?

Name: 1,594 responses

City: 1,580 responses

Membership: 1,551 responses

What are the name, city, and length of membership for the *second* congregation?

Name: 163 responses

City: 157 responses

Membership: 149 responses

What are the name, city, and length of membership for the *third* congregation?

Name: 14 responses

City: 13 responses

Membership: 13 responses

What are the primary reasons that your household does not belong to a Jewish congregation in the Puget Sound area?

1,130 responses

Engagement with Israel and Feelings of Peoplehood

How many times, if any, have you been to Israel?

Response	Weighted %	n
Never	45	932
Once	28	787
Twice	10	382
Three times	5	200
Four times or more	13	496
Total	100	2,797

Did you ever apply to go on a Taglit-Birthright Israel trip?

Response	Weighted %	n
I applied and went	22	200
I applied but did not go	4	32
No, I never applied	74	511
Total	100	743

To what extent do you...

Feel a connection to Jewish history?

Response	Weighted %	n
Not at all	2	44
A little	14	248
Somewhat	28	730
Very much	55	1,811
Total	100	2,833

Feel a connection to Israel?

Response	Weighted %	n
Not at all	20	296
A little	25	588
Somewhat	25	789
Very much	30	1,158
Total	100	2,831

Feel part of a worldwide Jewish community?

Response	Weighted %	n
Not at all	7	117
A little	24	443
Somewhat	34	958
Very much	35	1,313
Total	100	2,831

Feel a connection to the Jewish community where you live?

Response	Weighted %	n
Not at all	23	403
A little	30	622
Somewhat	26	898
Very much	21	915
Total	100	2,838

Feel a connection to Jewish customs and traditions?

Response	Weighted %	n
Not at all	3	33
A little	19	283
Somewhat	35	883
Very much	43	1,622
Total	100	2,821

Feel a connection to your Jewish peers?

Response	Weighted %	n
Not at all	6	115
A little	21	388
Somewhat	36	945
Very much	37	1,373
Total	100	2,821

To what extent are you currently engaged in political activities related to Israel?

Response	Weighted %	n
Not at all	61	1,545
A little	23	765
Somewhat	12	376
Very much	4	147
Total	100	2,833

In the past month, how often did you actively seek out news about Israel?

Response	Weighted %	n
Never	33	631
Once or twice	28	826
Once a week	12	381
Every few days	13	471
Once a day	10	345
Several times a day	5	186
Total	100	2,840

Think about the amount of attention Jewish organizations in the Puget Sound area devote to Israel, is it

Response	Weighted %	n
Far too little	7	157
Somewhat too little	17	441
About right	59	1,558
Somewhat too much	11	244
Far too much	6	77
Total	100	2,477

To what extent have you PERSONALLY experienced anti-Semitism in the past year?

Response	Weighted %	n
Not at all	68	1,906
A little	27	748
Somewhat	4	147
Very much	1	24
Total	100	2,825

What anti-Semitic experiences have you had?
794 responses

Jewish Programming

In the past year, how often have you or any member(s) of your household attended any Jewish programs, events, or activities, other than religious services?

Response	Weighted %	n
Never	33	596
Once or twice	29	715
Every few months	19	684
About once a month	9	405
Two or three times a month	5	240
Once a week or more	5	191
Total	100	2,831

What kinds of programs have you or any member of your household attended?
1,995 responses

What organizations, if any, sponsored those programs?
1,849 responses

What are the primary reasons why you have not attended such programs?
510 responses

How would you prefer to receive information about the Jewish community in the Puget Sound area?

Response	Weighted %	n
In print	11	335
Electronically	56	1,649
No preference	33	787
Total	100	2,771

Do you read the JT News?

Response	Weighted %	n
No	74	1,731
Yes	26	1,043
Total	100	2,774

In what ways did you hear about programs and events in the Jewish community in the past year?
2,420 responses

Would you be interested in attending the followings types of programs?

Jewish culture

Response	Weighted %	n
No	35	677
Yes	65	1,951
Total	100	2,628

Israeli culture

Response	Weighted %	n
No	63	1,370
Yes	37	1,186
Total	100	2,556

Jewish education

Response	Weighted %	n
No	51	1,018
Yes	49	1,582
Total	100	2,601

Social programming

Response	Weighted %	n
No	54	1,185
Yes	46	1,371
Total	100	2,556

Israel advocacy

Response	Weighted %	n
No	74	1,608
Yes	26	913
Total	100	2,521

Community service

Response	Weighted %	n
No	46	928
Yes	54	1,679
Total	100	2,607

Jewish holidays

Response	Weighted %	n
No	52	1,131
Yes	48	1,436
Total	100	2,567

Would you be interested in attending programs for the following groups of people?

LGBT

Response	Weighted %	n
No	86	2,122
Yes	14	286
Total	100	2,408

Senior citizens

Response	Weighted %	n
No	79	1,951
Yes	21	554
Total	100	2,505

Interfaith couples or families

Response	Weighted %	n
No	75	1,877
Yes	25	593
Total	100	2,470

People with disabilities

Response	Weighted %	n
No	85	2,094
Yes	15	327
Total	100	2,421

Intergenerational groups

Response	Weighted %	n
No	68	1,586
Yes	32	904
Total	100	2,490

Parents

Response	Weighted %	n
No	76	1,732
Yes	24	728
Total	100	2,460

Jewish singles

Response	Weighted %	n
No	83	2,055
Yes	17	400
Total	100	2,455

Empty nesters

Response	Weighted %	n
No	88	2,010
Yes	12	472
Total	100	2,482

What other types of Jewish programs would you be interested in attending, if any?
962 responses

How long would you be willing to travel on a regular basis to attend a program or activity sponsored by a Jewish organization?

Response	Weighted %	n
Less than 10 minutes	16	238
20-10 minutes	41	1,092
20-40 minutes	34	1,105
40-60 minutes	5	150
An hour or more	3	73
Total	100	2,658

Who are you most likely to approach for advice or information about Jewish programs in the Puget Sound area?

Response	Weighted %	n
Rabbi	8	237
Local Jewish community leader	4	137
Local Jewish community member	8	175
Family member	6	165
Friends	34	917
Internet	31	874
Other	9	197
Total	100	2,702

If other, please specify:
194 responses

Have you or anyone in your household ever been a member of the Stroum Jewish Community Center (the J)?

Response	Weighted %	n
No	73	1,757
Yes	27	1,026
Total	100	2,783

Are you or anyone in your household currently a member of the Stroum Jewish Community Center?

Response	Weighted %	n
No	71	710
I am a dues-paying member	22	240
I consider myself a member	7	72
Total	100	1,022

Are you a member of any organizations or clubs that are not sponsored by the Jewish community?

Response	Weighted %	n
No	46	1,237
Yes	54	1,545
Total	100	2,782

What organizations are those?

1,359 responses

What were your primary motivations for joining?

1,301 responses

Volunteering and Philanthropy

In the past month, did you volunteer your time to any organization? Please include service as a board member or officer of any organization, and any volunteering you did for non-Jewish organizations.

Response	Weighted %	n
No	49	1,155
Yes	51	1,611
Total	100	2,766

How many hours did you spend volunteering in the past month?

Response	Weighted %	n
0 hours	2	20
1-10 hours	65	1,057
11-20 hours	21	311
21-40 hours	9	137
40 hours or more	3	52
Total	100	1,577

In the past month, which best describes the organizations for which you volunteered?

Response	Weighted %	n
All Jewish	15	328
Mostly Jewish	7	174
About equal	11	227
Mostly non-Jewish	19	283
All non-Jewish	48	587
Total	100	1,599

What kind of volunteer work did you do for non-Jewish organizations?
1,187 responses

What kind of volunteer work did you do for Jewish organizations?
897 responses

What are the primary reasons why you did not volunteer for Jewish organizations?
511 responses

What are the primary reasons why you did not volunteer?
979 responses

Earlier, you indicated that you were interested in community service programs. What types of volunteer opportunities would you most like to have available to you and/or your family?
1,249 responses

Over the past year, did you make any charitable contributions?

Response	Weighted %	n
No	9	178
Yes	91	2,571
Total	100	2,749

About how much have you donated to charitable organizations in the past year?

Response	Weighted %	n
Under \$100	7	153
\$100 to \$2,499	52	1,140
\$2,500 to \$4,999	13	356
\$5,000 or more	19	590
I prefer not to answer	9	302
Total	100	2,541

Over the past year, which of the following best describes the charities to which you made monetary contributions, other than membership dues?

Response	Weighted %	n
All Jewish	5	128
Mostly Jewish	16	664
About equal	19	662
Mostly non-Jewish	29	691
All non-Jewish	30	405
Total	100	2,550

What are the primary reasons why you did not make a charitable contribution to Jewish community organizations in the past year?

332 responses

Over the past year, have you made charitable contributions to...

A synagogue, other than membership dues

Response	Weighted %	n
No	46	700
Yes	54	1,330
Total	100	2,030

Jewish Federation of Greater Seattle

Response	Weighted %	n
No	70	1,105
Yes	30	788
Total	100	1,893

Jewish Family Service of Seattle

Response	Weighted %	n
No	65	1,059
Yes	35	844
Total	100	1,903

Hillel

Response	Weighted %	n
No	84	1,379
Yes	16	426
Total	100	1,805

The Stroum Jewish Community Center

Response	Weighted %	n
No	89	1,504
Yes	11	280
Total	100	1,784

Another Jewish agency in the Puget Sound area

Response	Weighted %	n
No	69	1,168
Yes	31	692
Total	100	1,860

What was that agency?
628 responses

What were the primary reasons why you made no charitable donations in the past year?
148 responses

In the past year, did you receive any requests to make charitable donations to Puget Sound Jewish organizations?

Response	Weighted %	n
No	38	661
Yes	62	2,008
Total	100	2,669

In the coming year, do you expect your charitable giving, both in and outside the Jewish community, to:

Response	Weighted %	n
Increase	15	447
Decrease	9	160
Stay the same	77	2,063
Total	100	2,670

What are your primary motivations in choosing to make a charitable contribution to any organization?
2,110 responses

Health

Do you have a parent living in the Puget Sound area in a household other than your own who requires elder care services?

Response	Weighted %	n
No	94	2,293
Yes	6	221
Total	100	2,514

Do you have a parent who is currently a resident of an assisted living facility or nursing home?

Response	Weighted %	n
No	93	2,332
Yes	7	188
Total	100	2,520

Is this facility in the Puget Sound area?

Response	Weighted %	n
No	43	106
Yes	57	81
Total	100	187

During the past year, were counseling or other mental health services required for anyone in your household?

Response	Weighted %	n
No	72	1,961
Yes	28	715
Total	100	2,676

Do you provide any regular caregiving to any adult family members?

Response	Weighted %	n
No	92	2,386
Yes	8	299
Total	100	2,685

Describe your overall health. Is it...

Response	Weighted %	n
Excellent	36	992
Very good	38	1,061
Good	19	500
Fair	6	124
Poor	1	31
Total	100	2,708

Besides yourself, are there any adults in the HH in fair or poor health?

Response	Weighted %	n
No	92	1,868
Yes	8	192
Total	100	2,060

Are there any children in the HH in fair or poor health?

Response	Weighted %	n
No	97	918
Yes	3	36
Total	100	954

Do you or anyone in your household...

Have impaired function due to intellectual or physical disability

Response	Weighted %	n
No	90	2,420
Yes	10	281
Total	100	2,701

Need assistance with housekeeping and home maintenance

Response	Weighted %	n
No	93	2,469
Yes	7	217
Total	100	2,686

If you needed social services and those offered by a Jewish organization were equal in quality to other offerings, would you be

Response	Weighted %	n
Much more likely to use a Jewish provider	30	1,034
A little more likely to use a Jewish provider	29	809
Neither more nor less likely to use a Jewish provider	38	759
A little more likely to use a non-Jewish provider	1	27
A lot more likely to use a non- Jewish provider	1	34
Total	100	2,663

Labor Force Participation and Financial Well Being

Are you currently employed?

Response	Weighted %	n
No	29	790
Full-time	55	1,458
Part-time	17	452
Total	100	2,700

Approximately how much time does it normally take you to travel to work?

Response	Weighted %	n
Less than 10 minutes	26	481
20-10 minutes	28	569
20-40 minutes	33	605
40-60 minutes	10	179
An hour or more	4	59
Total	100	1893

Are you currently looking for work?

Response	Weighted %	n
No	87	2,408
Yes	13	282
Total	100	2,690

Which of the following words or phrases best describes your household's standard of living?

Response	Weighted %	n
Prosperous	10	283
Living very comfortably	38	1,031
Living reasonably comfortably	39	1,061
Just getting along	11	253
Nearly poor	1	26
Poor	1	25
Total	100	2,679

Overall, how confident are you that you (and your spouse/partner) will have enough money to provide higher education for your children?

Response	Weighted %	n
Very confident	46	381
Somewhat confident	36	336
Uncertain	13	149
Not very confident	3	42
Not at all confident	2	36
Total	100	944

Overall, how confident are you that you (and your spouse/partner) will have enough money to live comfortably throughout your retirement years?

Response	Weighted %	n
Very confident	29	719
Somewhat confident	42	1,172
Uncertain	21	546
Not very confident	4	122
Not at all confident	4	117
Total	100	2,676

Is any adult in your household currently unemployed and looking for work?

Response	Weighted %	n
No	90	1,844
Yes	10	211
Total	100	2,055

What kind of work do you do?

1,876 responses

Was your household's total income in 2013...

Response	Weighted %	n
Less than \$25,000	4	95
\$25,000 to \$49,999	10	195
\$50,000 to \$74,999	12	230
\$75,000 to \$99,999	9	232
\$100,000 to \$149,999	14	459
\$150,000 to \$199,999	12	259
\$200,000 or more	15	449
I prefer not to answer	25	740
Total	100	2,659

Are you or anyone in your household currently receiving any of the following:

Medicaid/Apple Health

Response	Weighted %	n
No	93	2,458
Yes	7	157
Total	100	2,615

Any home energy or utility assistance programs (LIHEAP, PSE Energy Lifeline, etc.)

Response	Weighted %	n
No	99	2,573
Yes	1	32
Total	100	2,605

Cash Assistance (Department of Social and Health Service programs such as TANF, ABD Assistance, etc.)

Response	Weighted %	n
No	99	2,575
Yes	1	29
Total	100	2,604

Social Security Insurance

Response	Weighted %	n
No	81	2,164
Yes	19	454
Total	100	2,618

Social Security Disability Insurance

Response	Weighted %	n
No	96	2,526
Yes	4	81
Total	100	2,607

Unemployment Benefits

Response	Weighted %	n
No	98	2,560
Yes	2	38
Total	100	2,598

Day care assistance

Response	Weighted %	n
No	99	2,580
Yes	1	26
Total	100	2,606

Subsidized housing (e.g., HUD, Seattle Housing Authority, King Responsey Housing Authority, etc.)

Response	Weighted %	n
No	99	2,580
Yes	1	26
Total	100	2,606

In the last year, did you or anyone in your household ever cut the size of your meals or skip meals because there wasn't enough money for food?

Response	Weighted %	n
No	93	2,593
Yes	7	90
Total	100	2,683

In the last year, did you or anyone in your household not fill a prescription for medication because you could not afford it?

Response	Weighted %	n
No	95	2,562
Yes	5	123
Total	100	2,685

Concluding Thoughts

Overall, what do you consider to be the strengths of the Puget Sound Jewish community?
1,880 responses

Overall, what programs, services, or organizations do you think are missing from the Puget Sound Jewish community?
1,675 responses

Thinking about your everyday life, both in the Jewish community and in a wider context, how does your Jewish identity affect your participation in your community?
1,840 responses

Appendix C: Survey Documentation

Pre-Notification Letter

May 5, 2014

Name
Address
City, State Zip

Dear [Last name] household,

Your household has been randomly selected to participate in an important survey of the Puget Sound Jewish community. The survey is intended to help local Jewish organizations assess the needs and interests of Jewish households and individuals throughout the region to enable them to meet those needs. It is being conducted on behalf of the Jewish Federation of Greater Seattle by the Cohen Center for Modern Jewish Studies at Brandeis University.

Over the next several weeks, you may receive a phone call about the study from our partners, the Social Development Research Group at the University of Washington. If you receive one of these phone calls, please don't hang up! This survey is very important and we need to hear from people just like you. The survey is completely voluntary; however, its usefulness is dependent on the honest answers and participation from all members of the Puget Sound Jewish community. You will *not* be asked to donate money and your information will remain confidential. The survey will take about 30 minutes to complete. You must be at least 18 years old to participate.

If you would like to complete the survey on-line, please visit the following link and enter your access code:

SURVEY LINK

Access Code: [ACCESS CODE]

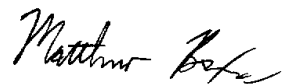
If you would like to take the survey over the phone, you may wait for your call from our University of Washington partners or you may call them at 888-313-9575 to schedule a time that is convenient for you to complete your survey. If you have any questions regarding the study, please call the research team at Brandeis at 781-736-2964 or by email at seattle@brandeis.edu. If you have any questions or concerns and would like to be in touch in with Jewish Federation of Greater Seattle please contact Aimee Finn at 206-774-2217 or by email at AimeeF@jewishinseattle.org. You may also contact the Brandeis Committee for the Protection of Human Subjects at 781-736-8133 or irb@brandeis.edu. This committee works to safeguard the interests of individuals who participate in Brandeis-sponsored research.

For background information about how the Cohen Center conducts community studies, please visit our website, <http://www.brandeis.edu/ssri/communitystudies/index.html>.

Results from the study will be available at the end of the year.

We would like to thank you in advance for your participation in this important research.

Sincerely,

A handwritten signature in black ink that reads "Matthew Boxer". The signature is written in a cursive style with a large, prominent 'M' and 'B'.

Matthew Boxer, PhD

Research Scientist, Cohen Center for Modern Jewish Studies

Briefing Materials for Interviewers

Interviewers received both written materials about the survey and formal training in best practices for collecting survey responses, an explanation as to the goals of the survey and explanations of why questions were being asked, potential obstacles to collecting good data, and anticipated respondent problems and strategies for coping with them. Interviewers also received a crash course about the American Jewish community, Judaism as a religion and culture, the names and functions of Jewish institutions in the Greater Seattle area, how to pronounce those names, and key terms they were likely to have to pronounce while asking survey questions or that they could expect to hear from respondents. The written content of the crash course appears in this section of the appendix.

Briefing Materials for 2014 Greater Seattle Jewish Community Study

The contents of this file will help callers and supervisors for the 2014 Greater Seattle Jewish Community Study better understand the questions on the survey and respondents' answers. If you have any questions that are not addressed by the material in this file, please contact the Cohen Center for clarification.

Matthew Boxer, Principal Investigator
Tel: (781) 736-3968
Email: mboxer@brandeis.edu

Janet Aronson, Project Manager
Tel: (781) 736-2348
Email: jaronson@brandeis.edu

Cohen Center for Modern Jewish Studies
Brandeis University, MS 014
415 South Street
Waltham, MA 02454-9110
Web: www.brandeis.edu/cmjs
Seattle@brandeis.edu

Jewish Holidays Cheat Sheet

Chanukah/Hannukah (**Ha**-noo-ka or **Kha**-noo-ka): Festival of Lights, usually celebrated in December. (Traditions: Lighting a menorah; eating jelly donuts and latkes; playing with dreidels.)

Passover (In Hebrew: **Pay**-sakh): Celebrating the Israelites' exodus from Egypt in Biblical times. (Traditions: Holding/attending seders [say-dair – ritual meals and Exodus story retellings]; eating matzah.) Observed in the spring.

Purim (**Poo**-rim or **Poo-reem**): Celebrating the foiling of a plot to kill the Jews of Persia. (Traditions: dressing in costumes; throwing parties; reading the Book of Esther.) Observed in the early spring.

Rosh Hashanah (Rosh Ha-sha-na – many possible pronunciations): The Jewish New Year, celebrated in the early fall. (Traditions: Blowing the shofar ram's horn; eating apples and honey.)

Shavuot (Sha-voo-oat or Shuh-**vo**-iss): Festival of Weeks, celebrating the Israelites receiving of the Torah at Mt. Sinai. (Traditions: Eating cheesecake; staying up all night to learn Jewish texts.) Observed in the late spring/early summer.

Simchat Torah (Sim-**kh**aht Toe-**rah** or Sim-khas Toe-rah): Often thought of as the last day of Sukkot; ending/beginning of Torah reading cycle. (Traditions: Dancing with Torah scrolls; large-scale celebration.)

Sukkot (Soo-**k**ote or Suhk-iss): Festival of Booths, celebrated in the fall. Commemorates dwellings of Israelites during 40 years of wandering in the desert. (Traditions: building/eating in huts or booths.)

Tisha B'Av (Ti-**sh**ah bi-Ahv or **Ti**-shah bi'Ahv): Day of mourning commemorating the destruction of the First and Second Temples in Jerusalem.

Tu B'Shevat (Too Bee-shvaht): Holiday of trees, celebrated sometime in mid-winter. (Traditions: Planting trees; eating nuts, dates, figs.)

Yom Ha'Atzmaut (Yome Ha-atz-ma-oot): Israel Independence Day, celebrated in the spring. (Traditions: Israel parades; Israel-themed parties.)

Yom Ha'Shoah (Yome Ha-**sh**o-ah): Holocaust Remembrance Day, in memory of the 6 million Jews murdered during the Holocaust. Observed in the spring (April/May).

Yom Kippur (Yome Key-**po**or or Yome Kipper): Day of Atonement, celebrated in fall. (Traditions: 25 hours of fasting and prayer.)

Hebrew/Yiddish Words Cheat Sheet

Ashkenazi (Osh-ke-**nah**-zee): Refers to Jews of Eastern and Central European descent. (See also Mizrahi and Sephardi.)

Bar Mitzvah or Bat/Bas Mitzvah (Bar **Mitts**-vah; Bot/Bahs **Mitts**-vah): Age at which a Jewish child is regarded as an adult under Jewish religious law. Boys have a Bar Mitzvah (literally “son of the commandments”), traditionally at age 13; girls have a Bat Mitzvah (literally “daughter of the commandments”), traditionally at age 12. Does not require a ceremony or celebration to mark the event, but in contemporary practice often has one.

Bima (**Bee**-mah): Generally a raised platform or stage in a synagogue from which prayers are led and the Torah is read.

Brit Milah/Bris (Breet Mee-**lah**/Bris): A Jewish circumcision that occurs when the baby boy is 8 days old.

Chabad (Kha-**bod**): A Jewish movement that is particularly active near college campuses. Known for outreach to non-religious Jews. Sometimes known as Lubavitch after the village of its origin in Western Russia.

Challah (Kha-**lah** or **kha**-lah): braided loaf of bread traditionally eaten during Shabbat and holiday meals

Chasidic/Hasidic (Kha-**sid**-ick): refers to any of a variety of forms of Orthodox Judaism that promotes spirituality through the internalization of Jewish mysticism. Chabad is the most widely recognized form of Chasidism today.

Havurah (Kha-voo-**rah**): A lay-organized Jewish prayer community. A havurah may not have an official building or rabbi, but will meet regularly for prayer.

Kaddish (**Kah**-dish): Jewish prayer for the dead

Kiddush (Key-**doosh** or **kih**-dish): Jewish prayer over wine recited at the beginning of Shabbat and holidays, as well as at some special events (e.g., weddings)

Ma'ariv (Mah-ah-reev): Evening prayers.

Mezuzah (Meh-**zoo**-zah or meh-**zoo**-**zah**): An encased scroll of parchment put on the doorway of a Jewish home.

Mincha (**Min**-khah): Afternoon prayers.

Minyan (Meen-**yahn** or like minion): A Jewish prayer quorum needed to conduct services.

Mizrahi (Miz-**rah**-khee): Refers to Jews of Middle Eastern descent. (See also Ashkenazi and Sephardi.)

Sephardi (Seh-**far**-dee): Refers to Jews of Spanish descent. (See also Ashkenazi and Mizrahi.)

Shabbat (Shah-**bot**): Sabbath. Begins Friday night at sundown and ends Saturday night at sundown. Traditionally a day of rest. Many respondents may use the Yiddish pronunciation, **Shah**-biss.

Shaharit (Shah-**khah**-reet): Morning prayers.

Shivah (Shi-**vuh**): A seven-day period of mourning observed by the loved one's family. Friends and neighbors will bring over food and comfort the family during the week.

Shtetl (Shteh-**tull**): Typically refers to a small town with a large Jewish population in Eastern or Central Europe in the 19th and 20th centuries before World War II. In popular usage, may refer to a neighborhood with a disproportionate Jewish population. (Classic example: Fiddler on the Roof.)

Shul (Shool): Refers to a Jewish congregation, usually a synagogue.

Siddur (See-**duer** or sih-derr): A Jewish prayer book.

Tallit (Tah-**leet** or tah-liss): A Jewish prayer shawl, traditionally worn by men during certain prayers. In recent years, some women have begun wearing them too.

Talmud (Tall-**mud**): Central text of rabbinic Judaism, over 6,000 pages in length, containing teachings and opinions of thousands of rabbis on a wide variety of topics.

Tikkun olam (Tee-**koon** oh-**lahm**): Literally, repairing the world. Refers to shared sense of ethical responsibility to build a model society in which everyone is treated fairly and everyone's needs are met.

Torah (Toe-**rah** or toe-**rah**): Foundational text of Judaism; occasionally referred to in English as the Pentateuch or the Five Books of Moses.

Tzedakah (Tseh-**duh**-kuh or ts-dah-**kah**): Literally means justice or righteousness, but most commonly used to refer to charity. More generally, the religious obligation to conduct oneself according to norms of justice and propriety.

Yahrzeit (Yar-**tzite**): Anniversary of the death of a close relative (parent, sibling, spouse, or child). Literally means "time of year." Often marked by lighting a special candle that burns all day and recitation of Kaddish in memory of the deceased.

Yeshiva (Yeh-**shee**-vah): An intensive academy of Jewish learning, typically deeply religious in orientation, that focuses primarily on traditional religious texts such as the Torah and Talmud.

Branches of Judaism

There is one section of the survey where respondents will be asked to identify themselves or members of their household with a “branch” of Judaism. Branches are denominational movements; membership in one movement or another typically suggests a certain level of religiosity, though there is also wide variation within movements. The main movements are referred to as:

- Orthodox
- Conservative
- Reconstructionist
- Reform

Of these, adherents to Orthodox Judaism tend to be most religiously conservative, while Reconstructionist and Reform Jews tend to be more progressive. (Note that Conservative Judaism should not be confused with political conservatism; many Conservative Jews are politically liberal.)

In addition to these movements, there are several other common responses given by respondents on Jewish surveys when asked about affiliation with a branch of Judaism:

- Renewal: difficult to describe, but has origins in countercultural movements late 1960s and 1970s
- Secular/culturally Jewish: These respondents may prefer to identify as secular or cultural Jews rather than identifying with one of the main movements, which have more religious connotations.
- Just Jewish: Many respondents prefer not to identify with any given denomination or movement, saying instead that they are “just Jewish.”

Respondents may decide that none of these options fit them and provide a different response. For these respondents, type their response in the text box next to “Other.” Common “other” entries for this question include post-denominational, traditional, modern Orthodox, Chabad, and Conservadox (i.e., a combination of Conservative and Orthodox).

General Jewish Phrases Cheat Sheet

Antisemitism: Prejudice, hatred of, or discrimination against Jews, individually or as a group, based on their Jewish national, ethnic, religious, or racial identity.

BDS: “Boycott, Divest, Sanction” – a movement dedicated toward applying economic pressure against the State of Israel to end its occupation of the West Bank and improve conditions for Palestinians. Prominent only in last several years. Often perceived as antisemitic.

Day school: Similar to Catholic school, a full-day program attended by Jewish children instead of public school in which students learn both secular subjects (e.g, English, math, science, social studies, etc.) and Jewish subjects (e.g., Hebrew, Jewish history, theology, etc.)

Hebrew school: Supplementary Jewish educational program attended by children between one and four times a week, generally after school or on weekends, in order to teach them about Jewish religious life, culture, and history. Sometimes referred to as “supplementary school” or “Sunday school.”

Taglit-Birthright Israel (Tahg-leet): A program that provides a free ten-day educational tour of Israel for qualified, self-identified Jewish young adults between the ages of 18 and 26. Largest Jewish educational program in the world; over 350,000 participants since 1999.

Three pillars of Judaism: A reference, generally from more religious Jews, to a section of the Talmud that says the world rests on three things: Torah study, ritual observance, and acts of kindness.

Zionism: National political movement of the Jewish people in support of a Jewish national homeland in the Land of Israel.

Puget Sound Jewish Community Words Cheat Sheet

AIPAC (Ay-pack): The American Israel Public Affairs Committee. A lobbying group that advocates pro-Israel policies to the US government.

Hillel (Hill-el): Shorthand for Hillel: The Foundation for Jewish Campus Life. Largest Jewish college campus-based organization in the world, serving over 550 colleges and universities throughout the world but primarily in North America.

Jewish Family Service of Seattle: Also known as JFS. A private, non-profit social service organization serving members of both the Jewish community and the wider community in the Puget Sound area.

Jewish Federation of Greater Seattle: Also known as the Federation. The central organizational body in the Jewish community. They manage the funding of many of the Jewish organizations in the area and are the main funders of this study.

J Street: An advocacy group that describes itself as left-wing, pro-Israel, and in favour of a peaceful settlement of the Israeli-Palestinian conflict. Its collegiate arm is known as J Street U.

JT News: The Seattle Jewish community's Jewish newspaper. May also be referred to as the Jewish Sound.

Samis Foundation (Sam-iss): A philanthropic organization endowed by the late Sam Israel, dedicated to enhancing Jewish education and appreciation for Jewish culture and history.

StandWithUs: A right-wing, pro-Israel advocacy organization.

Stroum Jewish Community Center (Strahm not Strowm): Also known as the JCC or "the J." A central Jewish community organization that is also a recreation center, meeting space, preschool, and summer camp. Primary location is on Mercer Island.

List of Puget Sound Jewish Congregations

Please note that this is not an exhaustive list but rather the list of congregations we expect respondents are most likely to identify as congregations of which they are members in the Puget Sound area.

Ashreichem Yisrael/Seattle Kehilla (Ahsh-ray-khem Yis-rah-el; Keh-hill-uh)

Bet Alef Meditative Synagogue (Bet Ah-liff)

Bet Chaverim Community Synagogue of South King County (Bet Kha-ve-reem)

Bet Shira (Bet Shee-rah or Bet Shee-rah)

Bikur Cholim-Machzikay Hadath Congregation (Bee-koor Kho-leem Makh-zee-kay Hah-dot)

Chabad – Chabad doesn't operate on a traditional membership structure and there are over a dozen centers in the region, but respondents might claim to be members of any of them.

Chavurat Shir Hayam (Kha-voo-rot Sheer Ha-yahm)

Congregation Beis Menachem-Chabad Lubavitch (Base Meh-nah-khem Kha-bod Loo-buh-vitch)

Congregation Beth Ha'ari (Beth Ha-ah-ree)

Congregation Beth Hatikvah (Beth Ha-teek-vah)

Congregation Beth Israel

Congregation Beth Shalom (Beth Sha-lom or Beth Sha-lom)

Congregation Eitz Or (Ets Or)

Congregation Ezra Bessaroth (Ez-rah Beh-sah-rote)

Congregation Kol Ami (Cole Ah-mee)

Congregation Kol Shalom (Cole Shah-lome)

Congregation Shaarei Tefillah-Lubavitch (Shah-ah-ray Teh-fee-lah)

Congregation Shevet Achim (Sheh-vet Ah-kheem)

Congregation Tikvah Chadashah (Teek-vah Khah-dah-shah)

Emanuel Congregation

Havurat Ee Shalom (Kha-vo-rot Ee Shah-lome)

Herzl-Ner Tamid Conservative Congregation (Herr-tzul Nerr Tah-meed)

Kol HaNeshamah (Cole Ha-neh-shah-mah)

Minyan Ohr Chadash (Min-yahn Or Khah-dahsh)

Mitriyah (Meet-ree-yah)

Sephardic Bikur Holim Congregation (Bee-koor Kho-leem)

Temple Beth Am (Beth Ahm)

Temple Beth El

Temple Beth Or

Temple B'nai Torah (Beh-nay Toe-rah or Beh-nay Toe-rah)

Temple De Hirsch Sinai

Additional Resources

The links on this page are provided for anyone who wishes to learn more about this study or related research.

- 1) *A Portrait of Jewish Americans: Findings from a Pew Research Center Survey of U.S. Jews (2013)*, <http://www.pewforum.org/files/2013/10/jewish-american-full-report-for-web.pdf>

The most recent large scale, nationally representative study of the US Jewish population; several Cohen Center researchers advised the Pew Research Center on the methodology and instrument.

- 2) *Greater Seattle Jewish Population Study, 2000 (2001)*, <http://www.jewishdatabank.org/Studies/downloadFile.cfm?FileID=1922>

The most recent study of the Jewish population of the Puget Sound region.

- 3) *The 2013 Greater Buffalo Jewish Community Study (2013)*, <http://www.brandeis.edu/cmjs/pdfs/BuffaloReport.pdf>

The most recent Jewish community study conducted by the Cohen Center. Illustrates the kind of analysis we will do with the data collected for this study.

- 4) Judaism 101, <http://www.jewfaq.org/index.shtml>

An online encyclopedia of Judaism, primarily from an Orthodox viewpoint.

- 5) Encyclopedia Judaica (online), <http://bit.ly/Si3heK>

The 2007 version of a classic Jewish encyclopedia.

Appendix D: Maps

The maps in this appendix are dot density maps, a type of map that uses dots to illustrate the presence of a specified feature or phenomenon. In this case, the maps provide a simple way to visualize the distribution of the Jewish population in the Greater Seattle area. The maps show the distribution of all Jewish households, households with children, and households with senior citizens across the region as a whole, the City of Seattle, and the suburbs of Bellevue, Redmond, and Mercer Island.

For maps reflecting all households, each dot represents 25 households; for maps that show either only those households with children or only those households with senior citizens, each dot represents 10 households.

For all maps, each dot is randomly placed within the ZIP code in which the represented households reside. Because postal maps of ZIP codes include bodies of water, some households may appear to be placed over the water. This is simply a result of the dots being randomly located within the ZIP code in a way that attempts to reflect accurately the density of the given population within the ZIP code in question.

Figure D1. Dot density map of Jewish households in Greater Seattle area (1 dot = 25 households)

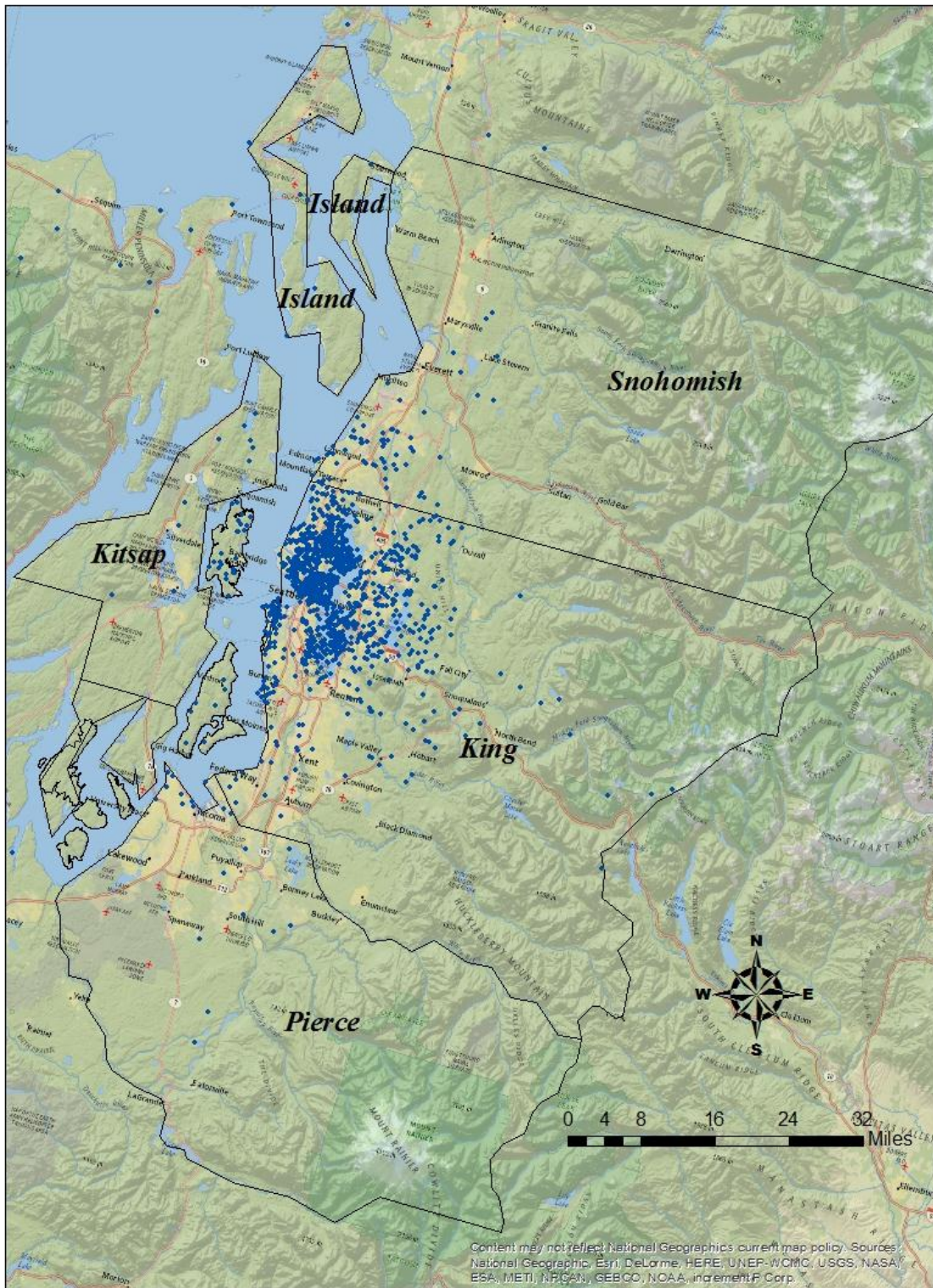


Figure D2. Dot density map of Jewish households, with focus on City of Seattle (1 dot = 25 households)

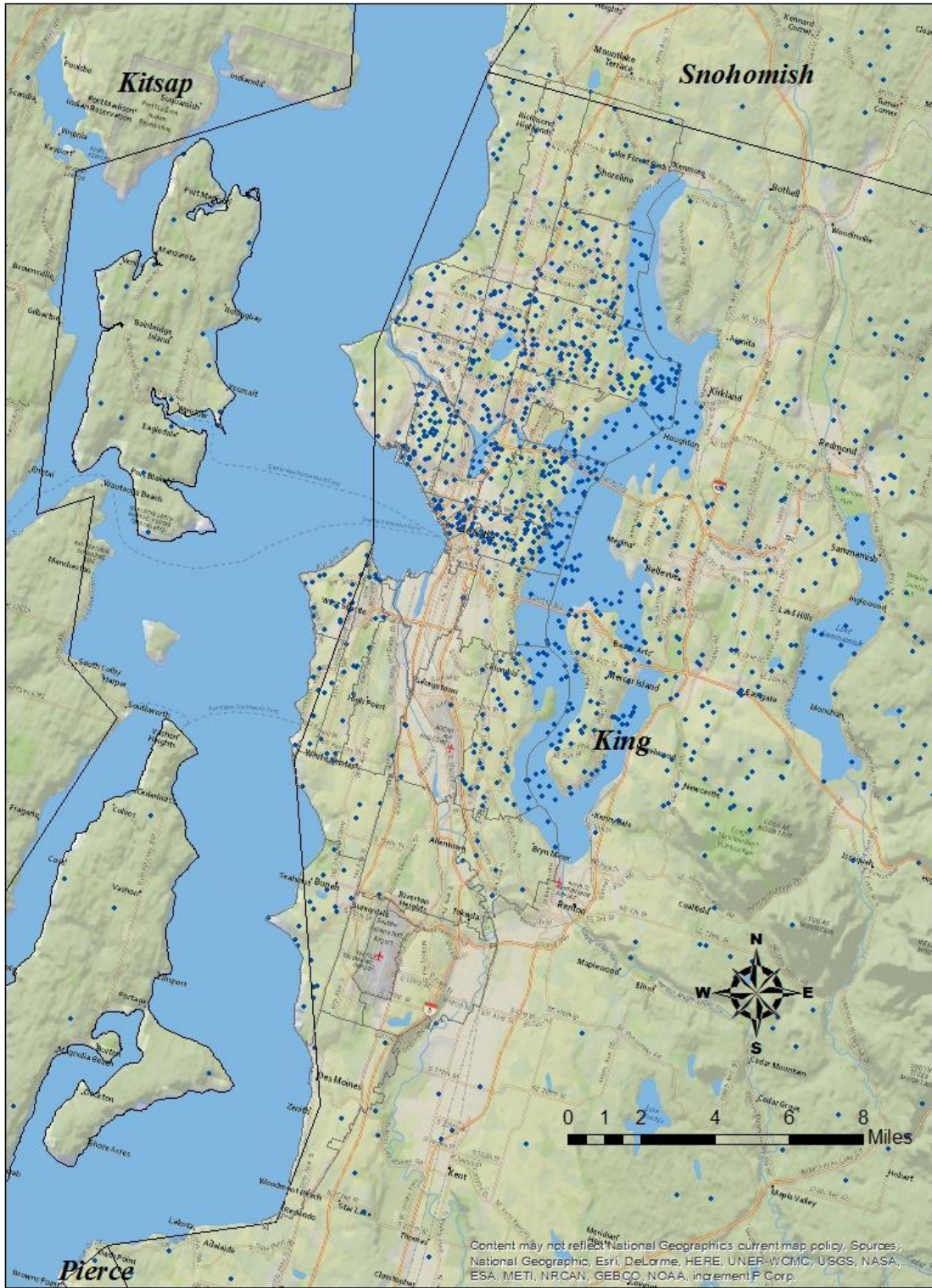


Figure D3. Dot density map of Jewish households, with focus on Bellevue, Redmond, and Mercer Island (1 dot = 25 households)

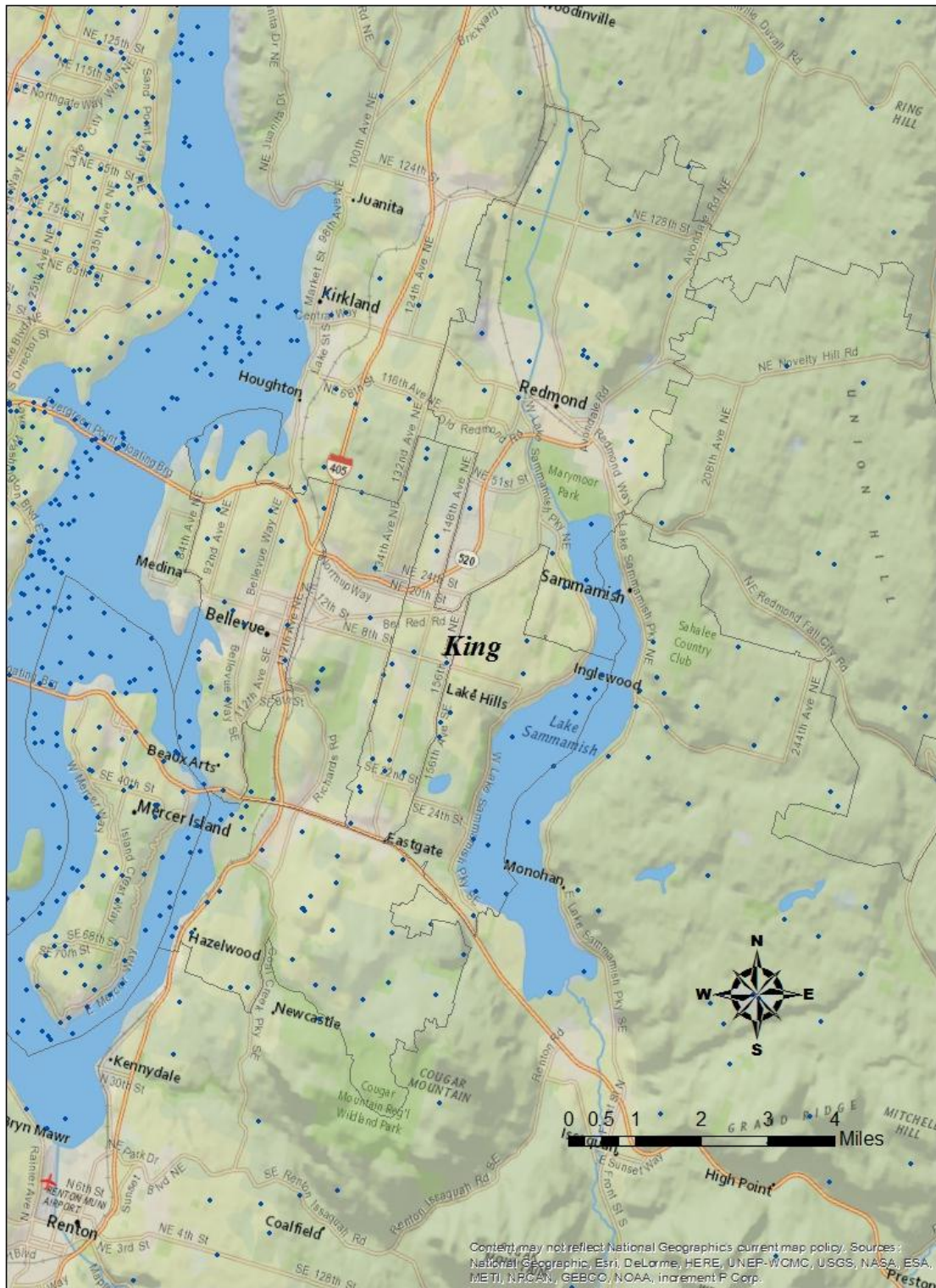


Figure D4. Dot density map of Jewish households with children in Greater Seattle area (1 dot = 10 households)

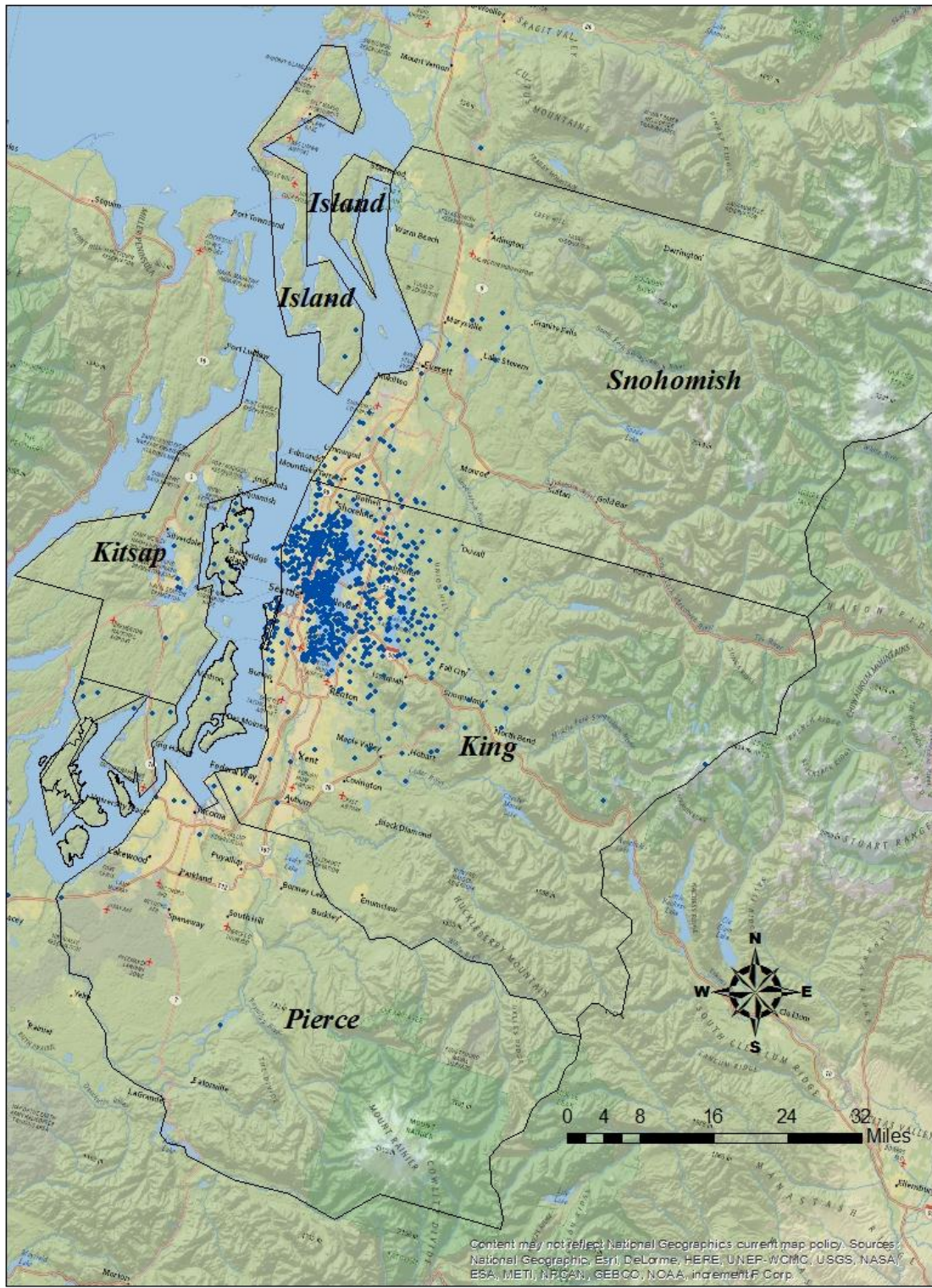


Figure D5. Dot density map of Jewish households with children, with focus on City of Seattle (1 dot = 10 households)

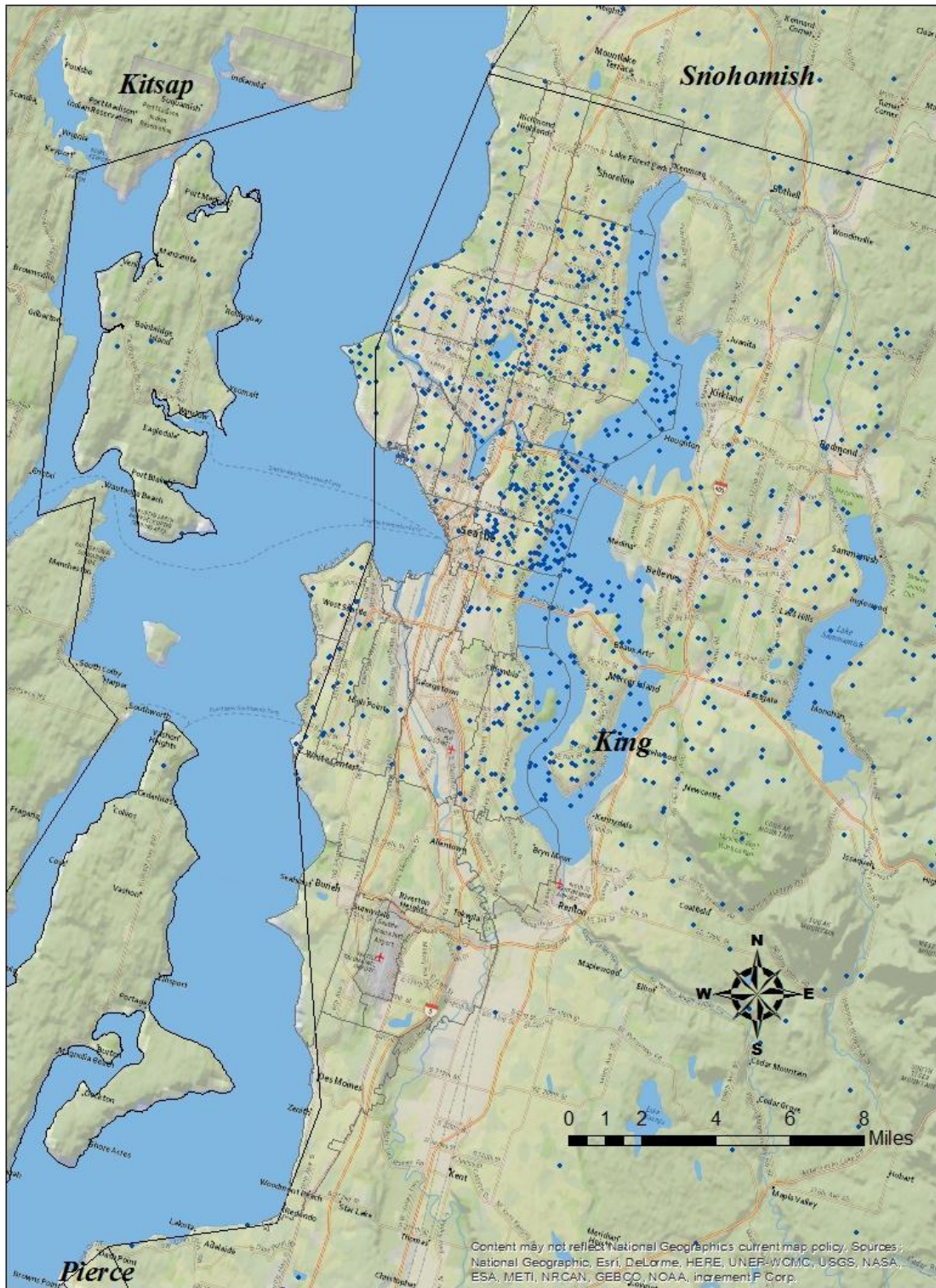


Figure D6. Dot density map of Jewish households with children, with focus on Bellevue, Redmond, and Mercer Island (1 dot = 10 households)



Figure D7. Dot density map of Jewish households with senior citizens, Greater Seattle area (1 dot = 10 households)

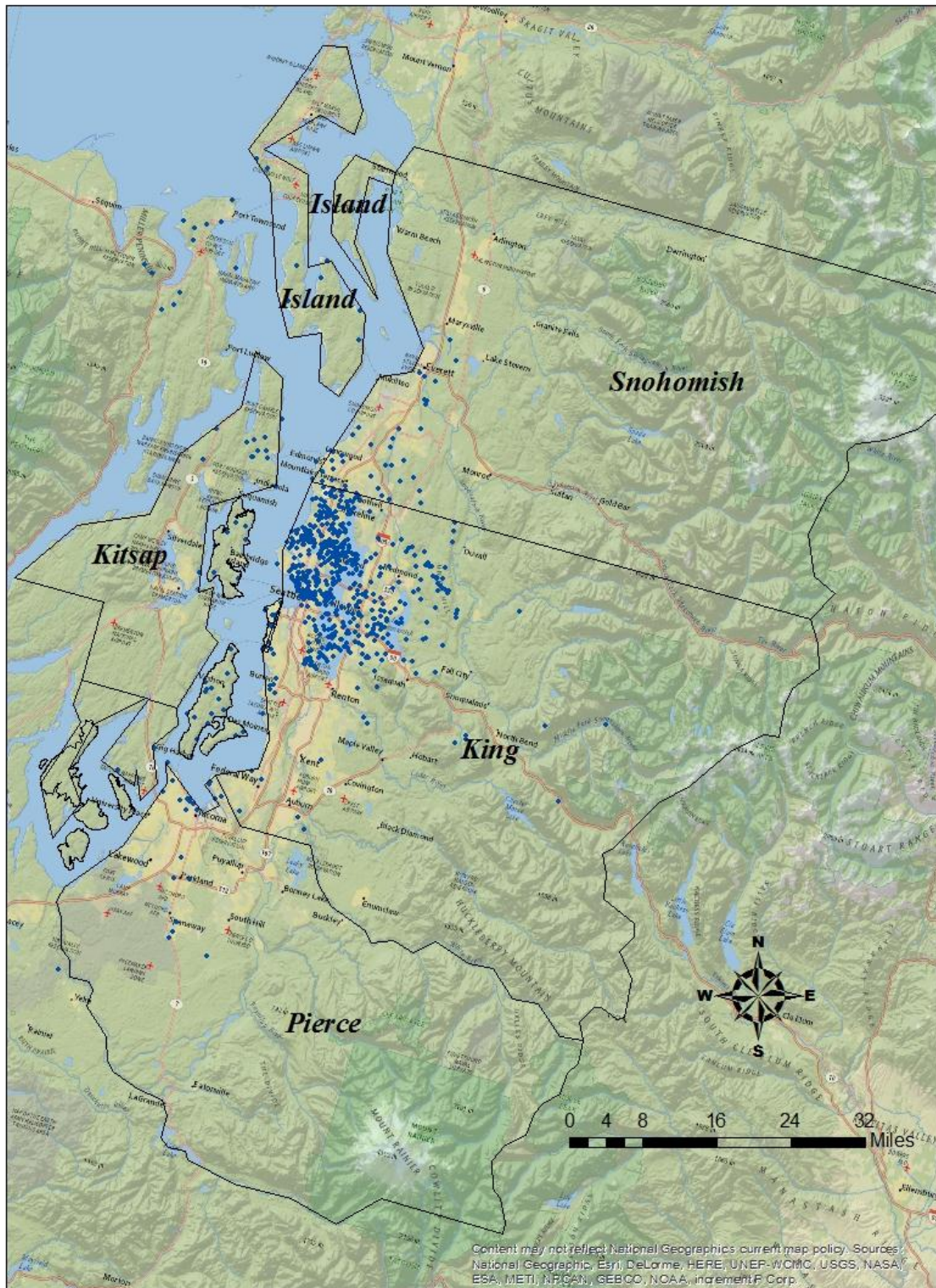


Figure D8. Dot density map of Jewish households with senior citizens, with focus on City of Seattle (1 dot = 10 households)

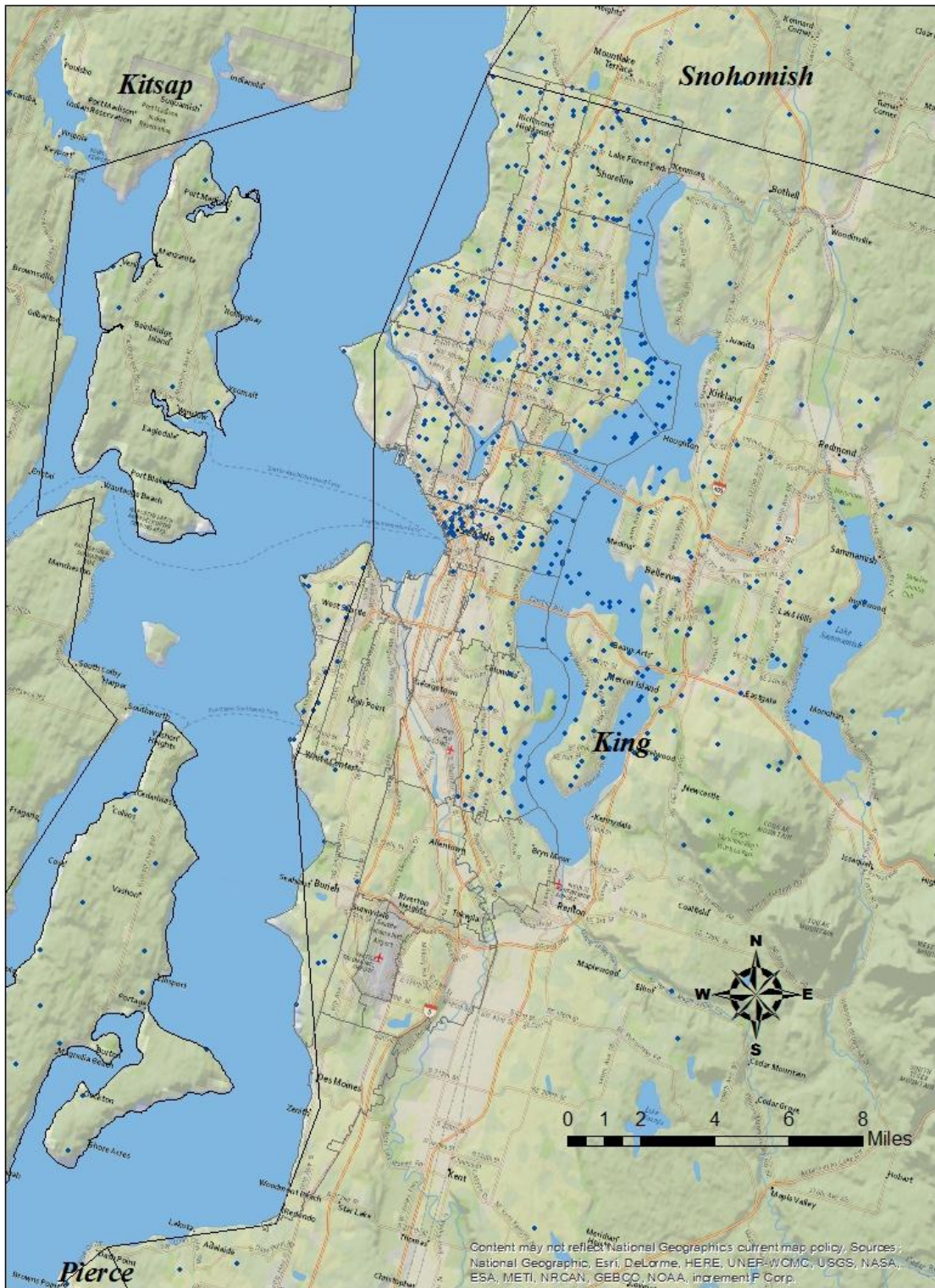
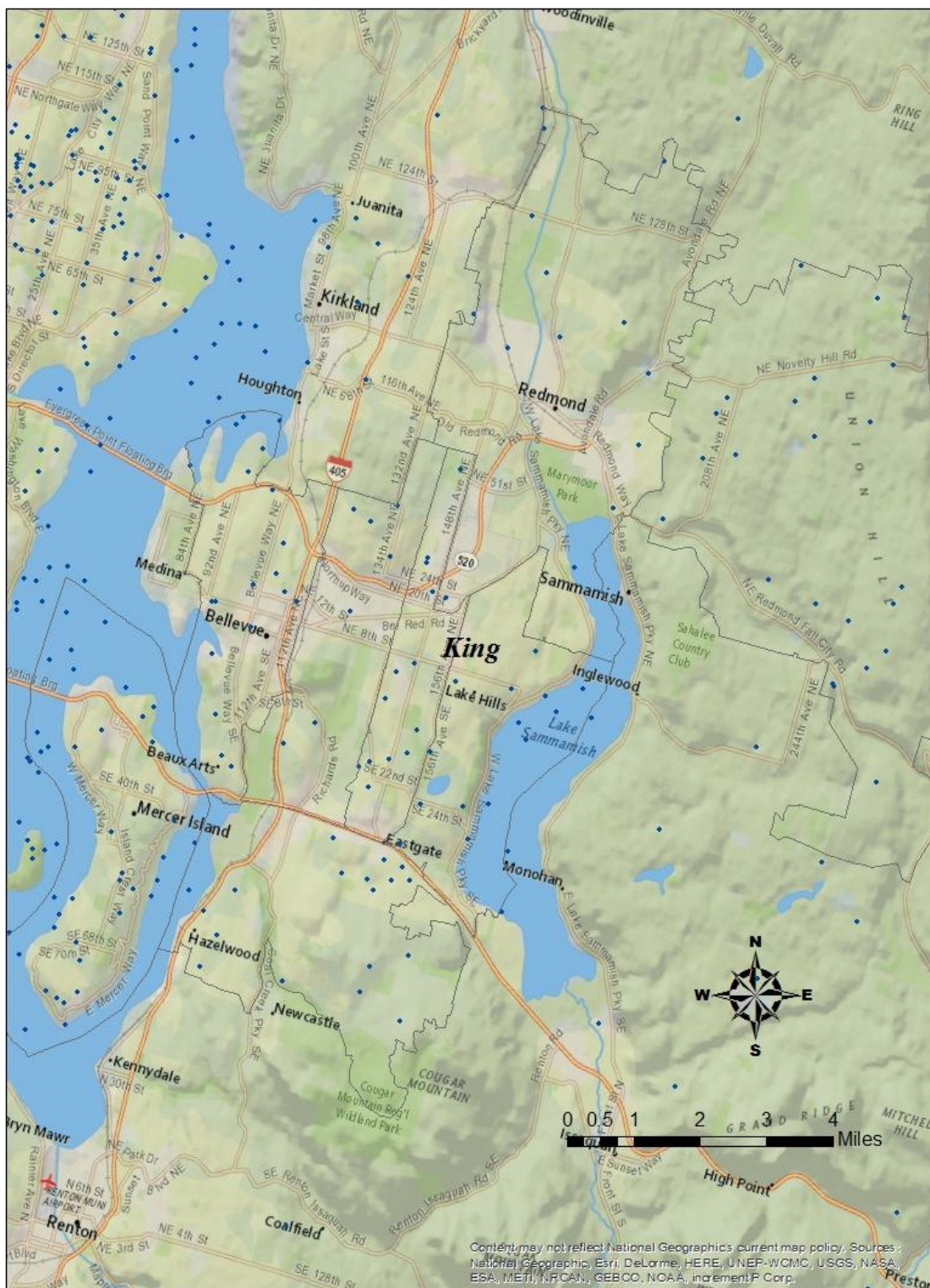


Figure D9. Dot density map of Jewish households with senior citizens, with focus on Bellevue, Redmond, and Mercer Island (1 dot = 10 households)



Appendix E: Neighborhoods

In several places in this report, analysis of the Greater Seattle Jewish community is broken down into five sections of the City of Seattle (Northwest Seattle, Northeast Seattle, Southwest Seattle, Southeast Seattle, and Downtown and surrounding neighborhoods), three suburbs (Bellevue, Mercer Island, and Redmond), the rest of King County, and areas outside of King County. Table E1 provides partial lists of the neighborhoods of the City of Seattle that were assigned to each of the city-based categories.

Neighborhoods were categorized in consultation with the Jewish Federation of Greater Seattle. Initial sections were developed using the ship canal as the north-south boundary and Interstate 5 as the east-west boundary, creating four quadrants. Because neighborhoods do not adhere perfectly to these boundaries and because survey respondents identified the ZIP codes in which they lived but not the neighborhoods, categorizations were made according to the section in which the majority of the ZIP code was located. Downtown and surrounding neighborhoods were identified as distinct from the four initial sections, and their ZIP codes were set aside for a fifth section in the City of Seattle. Additionally, although the Magnolia District is south of the ship canal, it was recategorized into Northwest Seattle because it was perceived as distinct from Downtown and the surrounding neighborhoods yet a better fit with the Northwest Seattle section than the Southwest Seattle section.

Neighborhoods that span multiple sections (i.e., at least one ZIP code assigned to one section and at least one assigned to another section) are listed in both sections of the city in Table E1 and designated as partial.

Table E1. Section Assignment of Neighborhoods, City of Seattle

Northeast Seattle	Bryant, Green Lake (partial), Laurelhurst, Maple Leaf, Matthews Beach, Olympic Hills, Pinehurst, Ravenna, University District, Victory Heights, Wedgwood
Northwest Seattle	Bitter Lake, Broadview, Fremont, Green Lake (partial), Greenwood, Haller Lake, Loyal Heights, Magnolia, North College Park, Phinney Ridge, Queen Anne, Sunset Hill, Wallingford, Whittier Heights
Southeast Seattle	Beacon Hill, Brighton, Central District, Columbia City, Denny-Blaine, First Hill (partial), Mount Baker, Rainier Beach, Seward Park
Southwest Seattle	Admiral, Arbor Heights, High Point, Highland Park, Roxhill, South Delridge, West Seattle
Downtown and Surrounding Neighborhoods	Downtown, Belltown, Capitol Hill, First Hill (partial), South Lake Union, Uptown